

For Research Use Only

CTDSP2 Polyclonal antibody

Catalog Number: 11116-1-AP



Basic Information

Catalog Number: 11116-1-AP	GenBank Accession Number: BC065920	Purification Method: Antigen affinity purification
Size: 150ul , Concentration: 500 ug/ml by Nanodrop;	GeneID (NCBI): 10106	Recommended Dilutions: WB 1:200-1:1000 IHC 1:20-1:200
Source: Rabbit	UNIPROT ID: O14595	
Isotype: IgG	Full Name: CTD (carboxy-terminal domain, RNA polymerase II, polypeptide A) small phosphatase 2	
Immunogen Catalog Number: AG1601	Calculated MW: 31 kDa	
	Observed MW: 31 kDa	

Applications

Tested Applications: WB, IHC, ELISA	Positive Controls:
Species Specificity: human, mouse, rat	WB : human kidney tissue, HepG2 cells, K-562 cells
Note-IHC: suggested antigen retrieval with TE buffer pH 9.0; (*) Alternatively, antigen retrieval may be performed with citrate buffer pH 6.0	IHC : human pancreas cancer tissue,

Background Information

CTDSPs are C-class phosphatases that act on Ser 5 of the Pol II C-terminal domain (CTD) to decrease transcription [PMID:15681389]. CTDSP enzymatic activity is required for REST function, and knockdown of CTDSP induces the neuronal differentiation of mouse embryonic carcinoma P19 cells. CTDSP2 has been shown to enhance TGF- β signaling by the dephosphorylation of SMAD proteins and attenuates androgen receptor-mediated transcription [PMID:16724108]. It negatively regulates RNA polymerase II transcription by controlling the transition from initiation/capping to processive transcript elongation. It was recruited by REST to neuronal genes that contain RE-1 elements, leading to neuronal gene silencing in non-neuronal cells [PMID: 12721286].

Storage

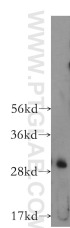
Storage:
Store at -20°C. Stable for one year after shipment.
Storage Buffer:
PBS with 0.02% sodium azide and 50% glycerol pH 7.3.
Aliquoting is unnecessary for -20°C storage

*** 20ul sizes contain 0.1% BSA

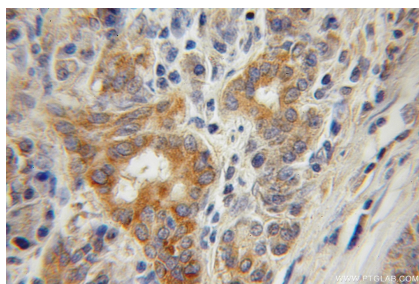
For technical support and original validation data for this product please contact:
T: 1 (888) 4PTGLAB (1-888-478-4522) (toll free in USA), or 1(312) 455-8498 (outside USA)
E: proteintech@ptglab.com
W: ptglab.com

This product is exclusively available under Proteintech Group brand and is not available to purchase from any other manufacturer.

Selected Validation Data



human kidney tissue were subjected to SDS PAGE followed by western blot with 11116-1-AP (CTDSP2 antibody) at dilution of 1:400 incubated at room temperature for 1.5 hours.



Immunohistochemical analysis of paraffin-embedded human pancreas cancer using 11116-1-AP (CTDSP2 antibody) at dilution of 1:50 (under 10x lens).