

For Research Use Only

MEST Polyclonal antibody

Catalog Number: 11118-1-AP

Featured Product

13 Publications



Basic Information

Catalog Number:

11118-1-AP

Size:

150ul, Concentration: 450 ug/ml by Nanodrop and 253 ug/ml by Bradford method using BSA as the standard;

Source:

Rabbit

Isotype:

IgG

Immunogen Catalog Number:

AG1617

GenBank Accession Number:

BC011908

GeneID (NCBI):

4232

UNIPROT ID:

Q5EB52

Full Name:

mesoderm specific transcript homolog (mouse)

Calculated MW:

38 kDa

Observed MW:

34 kDa

Purification Method:

Antigen affinity purification

Recommended Dilutions:

WB 1:500-1:1000

IP 0.5-4.0 ug for 1.0-3.0 mg of total protein lysate

IHC 1:50-1:500

Applications

Tested Applications:

WB, IP, IHC, ELISA

Cited Applications:

WB, IF, IHC

Species Specificity:

human, mouse, rat

Cited Species:

human, mouse

Positive Controls:

WB : human testis tissue, mouse testis tissue, PC-3 cells

IP : PC-3 cells,

IHC : human pancreas cancer tissue,

Note-IHC: suggested antigen retrieval with TE buffer pH 9.0; (*) Alternatively, antigen retrieval may be performed with citrate buffer pH 6.0

Background Information

MEST (Mesoderm-specific transcript homolog protein) is also named as PEG1 and belongs to the AB hydrolase superfamily. The gene is a imprinting gene, which is associated with growth of mesodermal origin cells (PMID:20339302) and plays important roles in embryo development (PMID:21375506). It is also a novel regulator of Wnt/CTNNB signalling during adipogenic differentiation (PMID:21375506). It has 3 isoforms produced by alternative splicing and the full length protein has a glycosylation site.

Notable Publications

Author	Pubmed ID	Journal	Application
Wei Peng	27697227	Placenta	WB, IHC
Keshari M Thakali	28864012	Placenta	WB
Jing Zhang	35042621	Gynecol Oncol	IHC

Storage

Storage:

Store at -20°C. Stable for one year after shipment.

Storage Buffer:

PBS with 0.02% sodium azide and 50% glycerol pH 7.3.

Aliquoting is unnecessary for -20°C storage

*** 20ul sizes contain 0.1% BSA

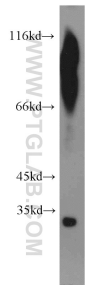
For technical support and original validation data for this product please contact:

T: 1 (888) 4PTGLAB (1-888-478-4522) (toll free in USA), or 1(312) 455-8498 (outside USA)

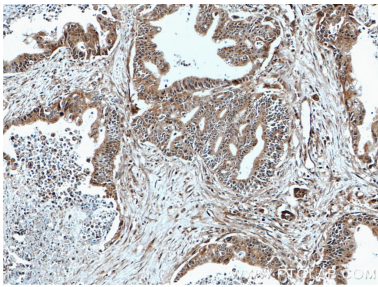
E: proteintech@ptglab.com
W: ptglab.com

This product is exclusively available under Proteintech Group brand and is not available to purchase from any other manufacturer.

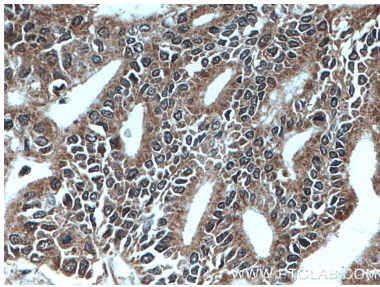
Selected Validation Data



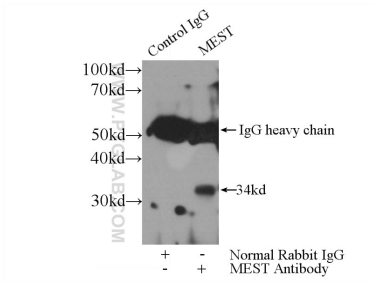
human testis tissue were subjected to SDS PAGE followed by western blot with 11118-1-AP (MEST antibody) at dilution of 1:500 incubated at room temperature for 1.5 hours.



Immunohistochemical analysis of paraffin-embedded human pancreas cancer tissue slide using 11118-1-AP (MEST antibody) at dilution of 1:200 (under 10x lens. Heat mediated antigen retrieval with Tris-EDTA buffer (pH 9.0).



Immunohistochemical analysis of paraffin-embedded human pancreas cancer tissue slide using 11118-1-AP (MEST antibody) at dilution of 1:200 (under 40x lens. Heat mediated antigen retrieval with Tris-EDTA buffer (pH 9.0).



IP result of anti-MEST (IP:11118-1-AP, 3ug; Detection:11118-1-AP 1:500) with PC-3 cells lysate 1720ug.