

For Research Use Only

# ATG12 Polyclonal antibody

Catalog Number: 11122-1-AP **36 Publications**



## Basic Information

**Catalog Number:**

11122-1-AP

**Size:**

150ul, Concentration: 300 µg/ml by Nanodrop and 140 µg/ml by Bradford method using BSA as the standard;

**Source:**

Rabbit

**Isotype:**

IgG

**Immunogen Catalog Number:**

AG1586

**GenBank Accession Number:**

BC011033

**GeneID (NCBI):**

9140

**UNIPROT ID:**

O94817

**Full Name:**

ATG12 autophagy related 12 homolog (S. cerevisiae)

**Calculated MW:**

16 kDa

**Observed MW:**

48-50 kDa

**Purification Method:**

Antigen affinity purification

**Recommended Dilutions:**

WB 1:500-1:1000

IP 0.5-4.0 µg for 1.0-3.0 mg of total protein lysate

IHC 1:20-1:200

## Applications

**Tested Applications:**

WB, IP, IHC, ELISA

**Cited Applications:**

WB, IHC, IF, CoIP

**Species Specificity:**

human, mouse

**Cited Species:**

human, mouse, rat, pig, hamster

**Note-IHC: suggested antigen retrieval with TE buffer pH 9.0; (\*) Alternatively, antigen retrieval may be performed with citrate buffer pH 6.0**

**Positive Controls:**

WB: human bladder tissue, UV treated HEK-293

IP: HEK-293 cells,

IHC: human prostate cancer tissue,

## Background Information

ATG12, also named as APG12 and APG12L, belongs to the ATG12 family. It is required for autophagy. Free ATG12 is 15kd or 8kd. Conjugated to ATG5, ATG12-ATG5 show 48-55kd.

## Notable Publications

Author	Pubmed ID	Journal	Application
Samana Batool	30274346	Int J Mol Sci	WB
Yannan Liu	30207362	Food Funct	WB,IHC
Min Liu	28871079	Nat Commun	WB

## Storage

**Storage:**

Store at -20°C. Stable for one year after shipment.

**Storage Buffer:**

PBS with 0.02% sodium azide and 50% glycerol pH 7.3.

Aliquoting is unnecessary for -20°C storage

\*\*\* 20ul sizes contain 0.1% BSA

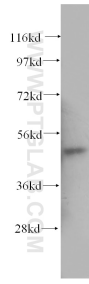
For technical support and original validation data for this product please contact:

T: 1 (888) 4PTGLAB (1-888-478-4522) (toll free in USA), or 1(312) 455-8498 (outside USA)

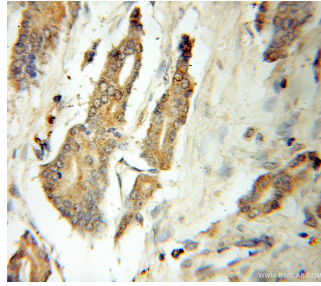
E: proteintech@ptglab.com  
W: ptglab.com

This product is exclusively available under Proteintech Group brand and is not available to purchase from any other manufacturer.

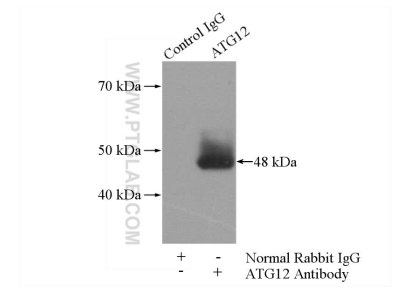
## Selected Validation Data



human bladder tissue were subjected to SDS PAGE followed by western blot with 11122-1-AP (ATG12 antibody) at dilution of 1:500 incubated at room temperature for 1.5 hours.



Immunohistochemical analysis of paraffin-embedded human prostate cancer using 11122-1-AP (ATG12 antibody) at dilution of 1:50 (under 10x lens).



IP result of anti-ATG12 (IP:11122-1-AP, 4ug; Detection:11122-1-AP 1:300) with HEK-293 cells lysate 880ug.