

For Research Use Only

COG3 Polyclonal antibody

Catalog Number: 11130-1-AP

6 Publications



Basic Information

Catalog Number:

11130-1-AP

Size:

150ul, Concentration: 400 ug/ml by Nanodrop and 200 ug/ml by Bradford method using BSA as the standard;

Source:

Rabbit

Isotype:

IgG

Immunogen Catalog Number:

AG1610

GenBank Accession Number:

BC038953

GeneID (NCBI):

83548

UNIPROT ID:

Q96JB2

Full Name:

component of oligomeric golgi complex 3

Calculated MW:

94 kDa

Observed MW:

94 kDa

Purification Method:

Antigen affinity purification

Recommended Dilutions:

WB 1:1000-1:4000

IP 0.5-4.0 ug for 1.0-3.0 mg of total protein lysate

IHC 1:20-1:200

Applications

Tested Applications:

WB, IP, IHC, ELISA

Cited Applications:

WB, IP

Species Specificity:

human, mouse, rat

Cited Species:

human

Note-IHC: suggested antigen retrieval with TE buffer pH 9.0; (*) Alternatively, antigen retrieval may be performed with citrate buffer pH 6.0

Positive Controls:

WB : HepG2 cells, L02 cells, mouse liver, rat liver

IP : HeLa cells,

IHC : human prostate cancer tissue, human pancreas tissue

Notable Publications

Author	Pubmed ID	Journal	Application
Leng Han	26439496	Cancer Cell	WB
Xinxin Peng	29706454	Cancer Cell	IP
Jiyong Liang	32265228	Cancer Immunol Res	WB,IP

Storage

Storage:

Store at -20°C. Stable for one year after shipment.

Storage Buffer:

PBS with 0.02% sodium azide and 50% glycerol pH 7.3.

Aliquoting is unnecessary for -20°C storage

*** 20ul sizes contain 0.1% BSA

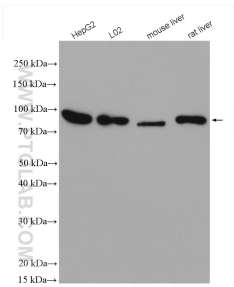
For technical support and original validation data for this product please contact:

T: 1 (888) 4PTGLAB (1-888-478-4522) (toll free in USA), or 1(312) 455-8498 (outside USA)

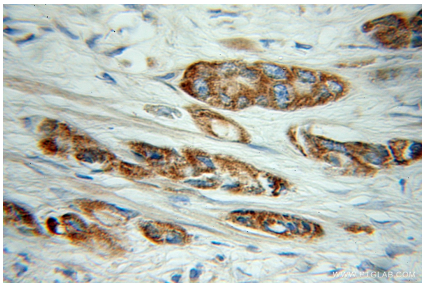
E: proteintech@ptglab.com
W: ptglab.com

This product is exclusively available under Proteintech Group brand and is not available to purchase from any other manufacturer.

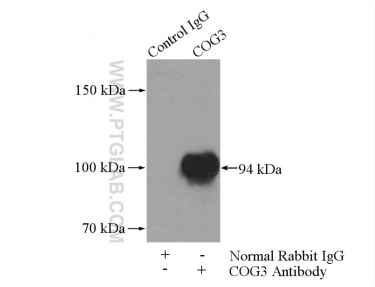
Selected Validation Data



Various lysates were subjected to SDS PAGE followed by western blot with 11130-1-AP (COG3 antibody) at dilution of 1:2000 incubated at room temperature for 1.5 hours.



Immunohistochemical analysis of paraffin-embedded human prostate cancer using 11130-1-AP (COG3 antibody) at dilution of 1:100 (under 10x lens).



IP result of anti-COG3 (IP:11130-1-AP, 4ug; Detection:11130-1-AP 1:500) with HeLa cells lysate 1200ug.