

For Research Use Only

# TBX22 Polyclonal antibody

Catalog Number: 11133-1-AP



## Basic Information

<b>Catalog Number:</b> 11133-1-AP	<b>GenBank Accession Number:</b> BC014194	<b>Purification Method:</b> Antigen affinity purification
<b>Size:</b> 150ul , Concentration: 750 µg/ml by Nanodrop and 367 µg/ml by Bradford method using BSA as the standard;	<b>GeneID (NCBI):</b> 50945	<b>Recommended Dilutions:</b> WB 1:500-1:2000
<b>Source:</b> Rabbit	<b>Full Name:</b> T-box 22	
<b>Isotype:</b> IgG	<b>Calculated MW:</b> 58 kDa	
<b>Immunogen Catalog Number:</b> AG1591	<b>Observed MW:</b> 45 kDa and 55 kDa	

## Applications

<b>Tested Applications:</b> WB,ELISA	<b>Positive Controls:</b> WB : PC-3 cells, mouse testis tissue
<b>Species Specificity:</b> human, mouse, rat	

## Background Information

The frontonasal mass gives rise to the facial midline and fuses with the maxillary prominence to form the upper lip. T-box transcription factor 22 (Tbx22) belongs to the T-box family of transcription factors, which is essential for normal craniofacial development [PMID:20033915]. Mutation in TBX22 in the frontonasal mass is reported in families with X-linked cleft palate and ankyloglossia [PMID:19816249].

## Storage

**Storage:**  
Store at -20°C. Stable for one year after shipment.  
**Storage Buffer:**  
PBS with 0.02% sodium azide and 50% glycerol pH 7.3.  
Aliquoting is unnecessary for -20°C storage

\*\*\* 20ul sizes contain 0.1% BSA

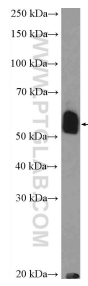
For technical support and original validation data for this product please contact:

T: 1 (888) 4PTGLAB (1-888-478-4522) (toll free in USA), or 1(312) 455-8498 (outside USA)

E: [proteintech@ptglab.com](mailto:proteintech@ptglab.com)  
W: [ptglab.com](http://ptglab.com)

This product is exclusively available under Proteintech Group brand and is not available to purchase from any other manufacturer.

## Selected Validation Data



PC-3 cells were subjected to SDS PAGE followed by western blot with 11133-1-AP (TBX22 Antibody) at dilution of 1:1000 incubated at room temperature for 1.5 hours.