

For Research Use Only

RIC8A Polyclonal antibody

Catalog Number: 11138-1-AP **2 Publications**



Basic Information

Catalog Number: 11138-1-AP	GenBank Accession Number: BC011821	Purification Method: Antigen affinity purification
Size: 150ul , Concentration: 350 µg/ml by Nanodrop and 200 µg/ml by Bradford method using BSA as the standard;	GeneID (NCBI): 60626	Recommended Dilutions: WB 1:1000-1:5000 IHC 1:20-1:200
Source: Rabbit	Full Name: resistance to inhibitors of cholinesterase 8 homolog A (C. elegans)	
Isotype: IgG	Calculated MW: 60 kDa	
Immunogen Catalog Number: AG1593	Observed MW: 58-62 kDa	

Applications

Tested Applications: IHC, WB, ELISA	Positive Controls: WB : BxPC-3 cells, human brain tissue, Jurkat cells
Cited Applications: IHC, WB	IHC : human pancreas cancer tissue,
Species Specificity: human, mouse, rat	
Cited Species: human, mouse	

Note-IHC: suggested antigen retrieval with TE buffer pH 9.0; (*) Alternatively, antigen retrieval may be performed with citrate buffer pH 6.0

Background Information

RIC8A, also named as synembryn-A, is a Guanine nucleotide exchange factor (GEF), which can activate some, but not all, G-alpha proteins by exchanging bound GDP for free GTP. It is involved in regulation of microtubule pulling forces during mitotic movement of chromosomes by stimulating G(i)-alpha protein, possibly leading to release G(i)-alpha-GTP and NuMA proteins from the NuMA-GPSM2-G(i)-alpha-GDP complex. RIC8A also acts as an activator for G(q)-alpha (GNAQ) protein by enhancing the G(q)-coupled receptor-mediated ERK activation.

Notable Publications

Author	Pubmed ID	Journal	Application
Fenech Claire C	19847316	Front Cell Neurosci	WB, IHC
Yunfan Yang	24469800	Proc Natl Acad Sci U S A	WB

Storage

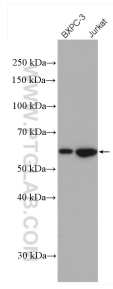
Storage:
Store at -20°C. Stable for one year after shipment.
Storage Buffer:
PBS with 0.02% sodium azide and 50% glycerol pH 7.3.
Aliquoting is unnecessary for -20°C storage

*** 20ul sizes contain 0.1% BSA

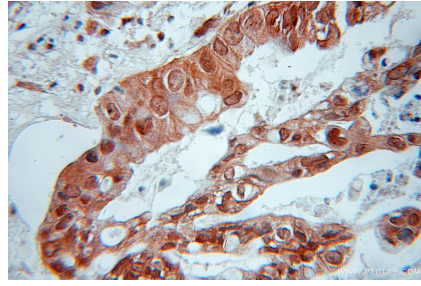
For technical support and original validation data for this product please contact:
T: 1 (888) 4PTGLAB (1-888-478-4522) (toll free in USA), or 1(312) 455-8498 (outside USA)
E: proteintech@ptglab.com
W: ptglab.com

This product is exclusively available under Proteintech Group brand and is not available to purchase from any other manufacturer.

Selected Validation Data



BxPC-3 cells and Jurkat cells were subjected to SDS PAGE followed by western blot with 11138-1-AP (RIC8A antibody) at dilution of 1:2500 incubated at room temperature for 1.5 hours.



Immunohistochemical analysis of paraffin-embedded human pancreas cancer using 11138-1-AP (RIC8A antibody) at dilution of 1:50 (under 10x lens).