

For Research Use Only

# Gamma Catenin Polyclonal antibody, PBS Only

Catalog Number: 11146-1-PBS



## Basic Information

### Catalog Number:

11146-1-PBS

### Size:

100ug , Concentration: 1 mg/ml by  
Nanodrop;

### Source:

Rabbit

### Isotype:

IgG

### Immunogen Catalog Number:

AG1627

### GenBank Accession Number:

BC011865

### GeneID (NCBI):

3728

### UNIPROT ID:

P14923

### Full Name:

junction plakoglobin

### Calculated MW:

82 kDa

### Observed MW:

82 kDa

### Purification Method:

Antigen affinity purification

## Applications

### Tested Applications:

WB, IHC, IP, Indirect ELISA

### Species Specificity:

human, mouse, rat

## Background Information

Plakoglobin ( $\gamma$ -catenin), a member of the Armadillo proteins, plays important roles in cell adhesion with  $\alpha$ -catenin and  $\beta$ -catenin, is involved in Wnt signaling, and is translocated into the nucleus and binds LEF1. Plakoglobin is a major cytoplasmic component of both desmosomes and adherens junctions, and is the only known constituent common to submembranous plaques in both of these structures, which are located at the intercalated disc (ICD) of cardiomyocytes. Plakoglobin links cadherins to the actin cytoskeleton. Mutations in plakoglobin are associated with arrhythmogenic right ventricular dysplasia and Pemphigus vulgaris.

## Storage

### Storage:

Store at  $-80^{\circ}\text{C}$ .

### Storage Buffer:

PBS Only

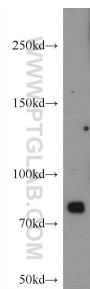
For technical support and original validation data for this product please contact:

T: 1 (888) 4PTGLAB (1-888-478-4522) (toll free  
in USA), or 1(312) 455-8498 (outside USA)

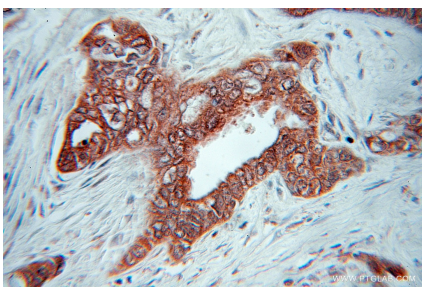
E: [proteintech@ptglab.com](mailto:proteintech@ptglab.com)  
W: [ptglab.com](http://ptglab.com)

This product is exclusively available under Proteintech Group brand and is not available to purchase from any other manufacturer.

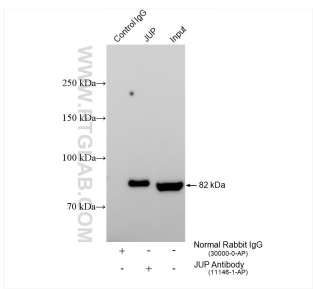
Selected Validation Data



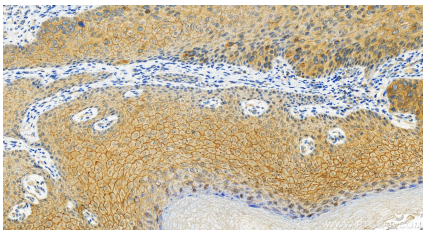
mouse heart tissue were subjected to SDS PAGE followed by western blot with 11146-1-AP (Plakoglobin/gamma catenin antibody at dilution of 1:1000 incubated at room temperature for 1.5 hours. This data was developed using the same antibody clone with 11146-1-PBS in a different storage buffer formulation.



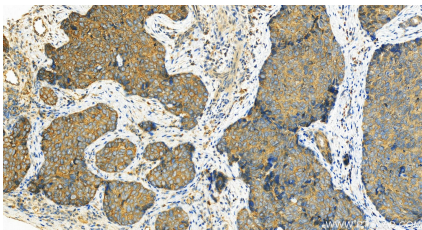
Immunohistochemical analysis of paraffin-embedded human pancreas cancer using 11146-1-AP (Plakoglobin/gamma catenin antibody) at dilution of 1:50 (under 10x lens). This data was developed using the same antibody clone with 11146-1-PBS in a different storage buffer formulation.



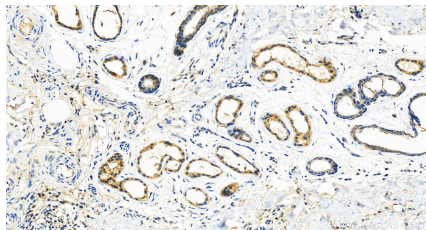
IP result of anti-Gamma Catenin (IP:11146-1-AP, 4ug; Detection:11146-1-AP 1:1000) with HT-29 cells lysate 1040 ug. This data was developed using the same antibody clone with 11146-1-PBS in a different storage buffer formulation.



Immunohistochemical analysis of paraffin-embedded human bowen disease slide using 11146-1-AP (Gamma Catenin antibody) at dilution of 1:200 (under 20x lens). Heat mediated antigen retrieval with Tris-EDTA buffer (pH 9.0). This data was developed using the same antibody clone with 11146-1-PBS in a different storage buffer formulation.



Immunohistochemical analysis of paraffin-embedded human bowen disease slide using 11146-1-AP (Gamma Catenin antibody) at dilution of 1:200 (under 20x lens). Heat mediated antigen retrieval with Tris-EDTA buffer (pH 9.0). This data was developed using the same antibody clone with 11146-1-PBS in a different storage buffer formulation.



Immunohistochemical analysis of paraffin-embedded human bowen disease slide using 11146-1-AP (Gamma Catenin antibody) at dilution of 1:200 (under 20x lens). Heat mediated antigen retrieval with Tris-EDTA buffer (pH 9.0). This data was developed using the same antibody clone with 11146-1-PBS in a different storage buffer formulation.