

For Research Use Only

Stathmin 1 Polyclonal antibody, PBS Only

Catalog Number: 11157-1-PBS

Featured Product



Basic Information

Catalog Number:

11157-1-PBS

Size:

100ug, Concentration: 1 mg/ml by Nanodrop;

Source:

Rabbit

Isotype:

IgG

Immunogen Catalog Number:

AG1633

GenBank Accession Number:

BC014353

GeneID (NCBI):

3925

UNIPROT ID:

P16949

Full Name:

stathmin 1/oncoprotein 18

Calculated MW:

18 kDa

Observed MW:

18 kDa

Purification Method:

Antigen affinity purification

Applications

Tested Applications:

WB, IHC, IF/ICC, FC (Intra), Indirect ELISA

Species Specificity:

human

Background Information

Stathmin 1 (STMN1) normally regulates microtubule dynamics either by sequestering free tubulin heterodimers or by promoting microtubule catastrophe. STMN1 is highly expressed in fetal and adult brain, spinal cord, and cerebellum. Many different phosphorylated forms are observed depending on specific combinations among the sites which can be phosphorylated. Phosphorylation of stathmin is involved in response to NGF, neuron polarization and microtubule polymerization inhibition activity. Increased expression of STMN1 has been observed in a variety of human malignancies, such as colorectal primary tumors and metastatic tissues, but its association with melanoma is so far not well known.

Storage

Storage:

Store at -80°C.

Storage Buffer:

PBS only, pH7.3

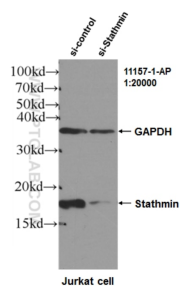
For technical support and original validation data for this product please contact:

T: 1 (888) 4PTGLAB (1-888-478-4522) (toll free in USA), or 1(312) 455-8498 (outside USA)

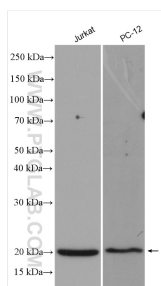
E: proteintech@ptglab.com
W: ptglab.com

This product is exclusively available under Proteintech Group brand and is not available to purchase from any other manufacturer.

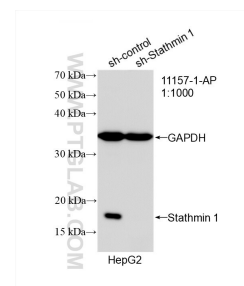
Selected Validation Data



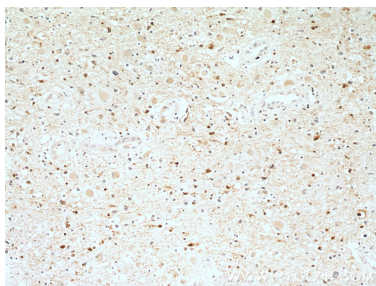
WB results of Stathmin antibody (11157-1-AP, 1:20000) with si-control and si-Stathmin transfected Jurkat cells. This data was developed using the same antibody clone with 11157-1-PBS in a different storage buffer formulation.



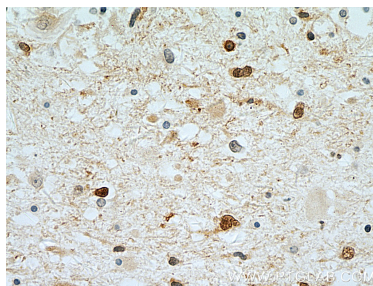
Various lysates were subjected to SDS PAGE followed by western blot with 11157-1-AP (Stathmin 1 antibody) at dilution of 1:2000 incubated at room temperature for 1.5 hours. This data was developed using the same antibody clone with 11157-1-PBS in a different storage buffer formulation.



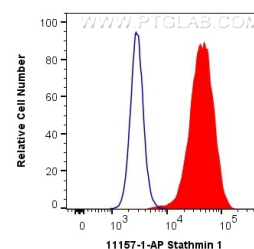
WB result of Stathmin 1 antibody (11157-1-AP; 1:1000; incubated at room temperature for 1.5 hours) with sh-Control and sh-Stathmin 1 transfected HepG2 cells. This data was developed using the same antibody clone with 11157-1-PBS in a different storage buffer formulation.



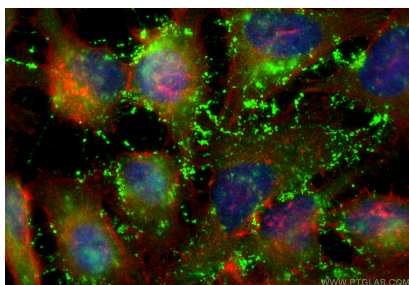
Immunohistochemical analysis of paraffin-embedded human gliomas tissue slide using 11157-1-AP (Stathmin 1 antibody at dilution of 1:50 (under 10x lens). This data was developed using the same antibody clone with 11157-1-PBS in a different storage buffer formulation.



Immunohistochemical analysis of paraffin-embedded human gliomas using 11157-1-AP (Stathmin 1 antibody) at dilution of 1:50 (under 10x lens). This data was developed using the same antibody clone with 11157-1-PBS in a different storage buffer formulation.



1X10⁶ HeLa cells were intracellularly stained with 0.4 ug Anti-Human Stathmin 1 (11157-1-AP) and CoraLite®488-Conjugated AffiniPure Goat Anti-Rabbit IgG(H+L) at dilution 1:1000 (red), or 0.4 ug Control Antibody. Cells were fixed with 4% PFA and permeabilized with Flow Cytometry Perm Buffer (PF00011-C). This data was developed using the same antibody clone with 11157-1-PBS in a different storage buffer formulation.



Immunofluorescent analysis of (-20°C Ethanol) fixed HeLa cells using Stathmin 1 antibody (11157-1-AP) at dilution of 1:200 and CoraLite®488-Conjugated Goat Anti-Rabbit IgG(H+L) (SA00013-2), CL594-Phalloidin (red). This data was developed using the same antibody clone with 11157-1-PBS in a different storage buffer formulation.