

For Research Use Only

ABCD1 Polyclonal antibody

Catalog Number: 11159-1-AP

2 Publications



Basic Information

Catalog Number:

11159-1-AP

Size:

150ul, Concentration: 350 ug/ml by Nanodrop and 133 ug/ml by Bradford method using BSA as the standard;

Source:

Rabbit

Isotype:

IgG

Immunogen Catalog Number:

AG1635

GenBank Accession Number:

BC025358

GeneID (NCBI):

215

UNIPROT ID:

P33897

Full Name:

ATP-binding cassette, sub-family D (ALD), member 1

Calculated MW:

745 aa, 83 kDa

Observed MW:

75 kDa

Purification Method:

Antigen affinity purification

Recommended Dilutions:

WB 1:500-1:2000

IP 0.5-4.0 ug for 1.0-3.0 mg of total protein lysate

IHC 1:20-1:200

IF/ICC 1:20-1:200

Applications

Tested Applications:

WB, IHC, IF/ICC, IP, ELISA

Cited Applications:

WB, IF

Species Specificity:

human, mouse, rat

Cited Species:

human, mouse

Note-IHC: suggested antigen retrieval with TE buffer pH 9.0; (*) Alternatively, antigen retrieval may be performed with citrate buffer pH 6.0

Positive Controls:

WB : human brain tissue, HeLa cells, mouse liver tissue

IP : mouse liver tissue,

IHC : human lung cancer tissue,

IF/ICC : HeLa cells,

Background Information

ABCD1 (also known as ALDP) is a member of the ATP-binding cassette (ABC) transporter superfamily which functions as transporter for a wide variety of substrates. It localizes to the peroxisomal membrane. The exact function is not clear so far. Various mutations of ABCD1 cause X-linked adrenoleukodystrophy (X-ALD), an inherited neurodegenerative disease affecting the nervous system white matter and adrenal cortex.

Notable Publications

Author	Pubmed ID	Journal	Application
Isabel Valença	33121137	Cancers (Basel)	WB
Yejin Yao	38062668	J Biomed Res	IF

Storage

Storage:

Store at -20°C. Stable for one year after shipment.

Storage Buffer:

PBS with 0.02% sodium azide and 50% glycerol pH 7.3.

Aliquoting is unnecessary for -20°C storage

*** 20ul sizes contain 0.1% BSA

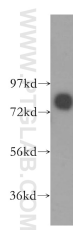
For technical support and original validation data for this product please contact:

T: 1 (888) 4PTGLAB (1-888-478-4522) (toll free in USA), or 1(312) 455-8498 (outside USA)

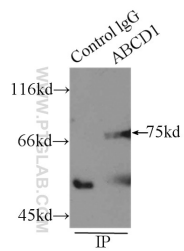
E: proteintech@ptglab.com
W: ptglab.com

This product is exclusively available under Proteintech Group brand and is not available to purchase from any other manufacturer.

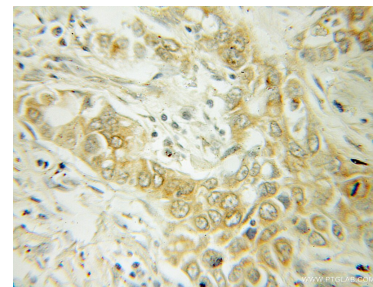
Selected Validation Data



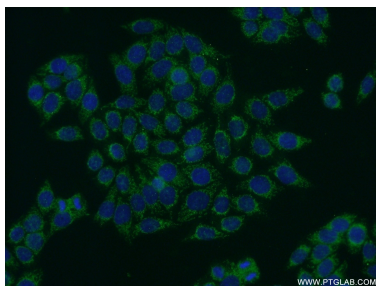
human brain tissue were subjected to SDS PAGE followed by western blot with 11159-1-AP (ABCD1 antibody) at dilution of 1:300 incubated at room temperature for 1.5 hours.



IP result of anti-ABCD1 (IP:11159-1-AP, 4ug; Detection:11159-1-AP 1:500) with mouse liver tissue lysate 5000ug.



Immunohistochemical analysis of paraffin-embedded human lung cancer using 11159-1-AP (ABCD1 antibody) at dilution of 1:50 (under 10x lens).



Immunofluorescent analysis of HeLa cells using 11159-1-AP (ABCD1 antibody) at dilution of 1:50 and Alexa Fluor 488-conjugated Goat Anti-Rabbit IgG(H+L).