

For Research Use Only

EIF2S3 Polyclonal antibody

Catalog Number: 11162-1-AP **3 Publications**



Basic Information

Catalog Number: 11162-1-AP	GenBank Accession Number: BC019906	Purification Method: Antigen affinity purification
Size: 150ul , Concentration: 450 µg/ml by Nanodrop and 253 µg/ml by Bradford method using BSA as the standard;	GeneID (NCBI): 1968	Recommended Dilutions: WB 1:500-1:2000 IP 0.5-4.0 ug for 1.0-3.0 mg of total protein lysate IHC 1:50-1:500 IF 1:50-1:500
Source: Rabbit	Full Name: eukaryotic translation initiation factor 2, subunit 3 gamma, 52kDa	
Isotype: IgG	Calculated MW: 52 kDa	
Immunogen Catalog Number: AG1650	Observed MW: 52 kDa	

Applications

Tested Applications: IF, IHC, IP, WB, ELISA	Positive Controls: WB : HeLa cells, mouse thymus tissue, COLO 320 cells IP : HeLa cells, IHC : human lung cancer tissue, human tonsillitis tissue IF : HeLa cells,
Cited Applications: WB	
Species Specificity: human, mouse	
Cited Species: human	

Note-IHC: suggested antigen retrieval with TE buffer pH 9.0; (*) Alternatively, antigen retrieval may be performed with citrate buffer pH 6.0

Background Information

Interacts with GTP and initiator methionyl-tRNA, translation initiation factor eIF2 forms a ternary complex that binds the 40S ribosome and then scans an mRNA to select the AUG start codon for protein synthesis[PMID: 9736774]. Junction of the 60S ribosomal subunit to form the 80S initiation complex is preceded by hydrolysis of the GTP bound to eIF-2 and release of an eIF-2-GDP binary complex. In order for eIF-2 to recycle and catalyze another round of initiation, the GDP bound to eIF-2 must exchange with GTP by way of a reaction catalyzed by eIF-2B. EIF2S3 is the core subunit of the heterotrimeric eIF2 complex.[PMID:23063529]

Notable Publications

Author	Pubmed ID	Journal	Application
Nasim Haghbandish	30699057	Mol Biol Cell	WB
Yulin Chen	37945829	Nat Cell Biol	WB
Stoll Georg G	23912948	Nat Neurosci	WB

Storage

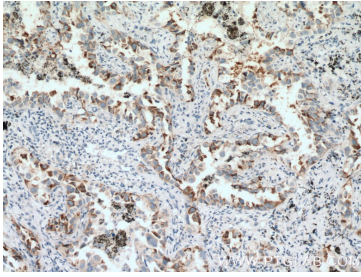
Storage:
Store at -20°C. Stable for one year after shipment.
Storage Buffer:
PBS with 0.02% sodium azide and 50% glycerol pH 7.3.
Aliquoting is unnecessary for -20°C storage

*** 20ul sizes contain 0.1% BSA

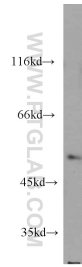
For technical support and original validation data for this product please contact:
T: 1 (888) 4PTGLAB (1-888-478-4522) (toll free in USA), or 1(312) 455-8498 (outside USA)
E: proteintech@ptglab.com
W: ptglab.com

This product is exclusively available under Proteintech Group brand and is not available to purchase from any other manufacturer.

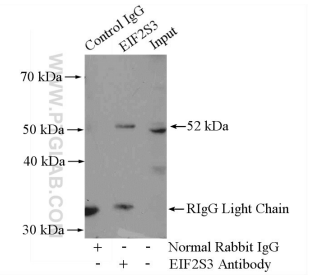
Selected Validation Data



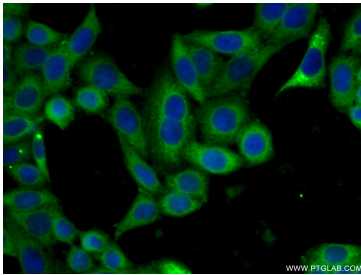
Immunohistochemical analysis of paraffin-embedded human lung cancer tissue slide using 11162-1-AP (EIF2S3 antibody) at dilution of 1:200 (under 10x lens. Heat mediated antigen retrieval with Tris-EDTA buffer (pH 9.0).



HeLa cells were subjected to SDS PAGE followed by western blot with 11162-1-AP (EIF2S3 antibody) at dilution of 1:1000 incubated at room temperature for 1.5 hours.



IP Result of anti-EIF2S3 (IP:11162-1-AP, 4ug; Detection:11162-1-AP 1:500) with HeLa cells lysate 2800ug.



Immunofluorescent analysis of (-20°C Ethanol) fixed HeLa cells using 11162-1-AP (EIF2S3 antibody) at dilution of 1:50 and Alexa Fluor 488-conjugated AffiniPure Goat Anti-Rabbit IgG(H+L).