

For Research Use Only

EIF2S3 Polyclonal antibody, PBS Only

Catalog Number: 11162-1-PBS



Basic Information

Catalog Number:

11162-1-PBS

Size:

100ug, Concentration: 1 mg/ml by Nanodrop;

Source:

Rabbit

Isotype:

IgG

Immunogen Catalog Number:

AG1650

GenBank Accession Number:

BC019906

GeneID (NCBI):

1968

UNIPROT ID:

P41091

Full Name:

eukaryotic translation initiation factor 2, subunit 3 gamma, 52kDa

Calculated MW:

52 kDa

Observed MW:

52 kDa

Purification Method:

Antigen affinity purification

Applications

Tested Applications:

WB, IHC, IF/ICC, IP, Indirect ELISA

Species Specificity:

human, mouse

Background Information

Interacts with GTP and initiator methionyl-tRNA, translation initiation factor eIF2 forms a ternary complex that binds the 40S ribosome and then scans an mRNA to select the AUG start codon for protein synthesis[PMID: 9736774]. Junction of the 60S ribosomal subunit to form the 80S initiation complex is preceded by hydrolysis of the GTP bound to eIF-2 and release of an eIF-2-GDP binary complex. In order for eIF-2 to recycle and catalyze another round of initiation, the GDP bound to eIF-2 must exchange with GTP by way of a reaction catalyzed by eIF-2B. EIF2S3 is the core subunit of the heterotrimeric eIF2 complex.[PMID:23063529]

Storage

Storage:

Store at -80°C.

Storage Buffer:

PBS Only

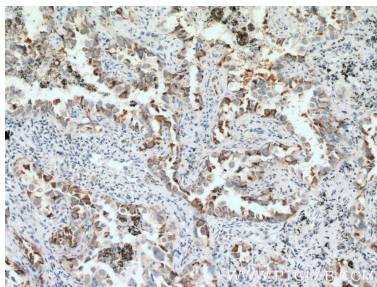
For technical support and original validation data for this product please contact:

T: 1 (888) 4PTGLAB (1-888-478-4522) (toll free in USA), or 1(312) 455-8498 (outside USA)

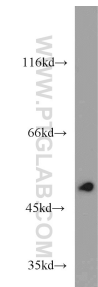
E: proteintech@ptglab.com
W: ptglab.com

This product is exclusively available under Proteintech Group brand and is not available to purchase from any other manufacturer.

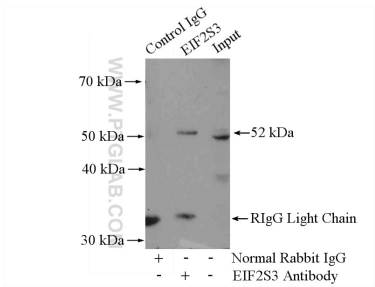
Selected Validation Data



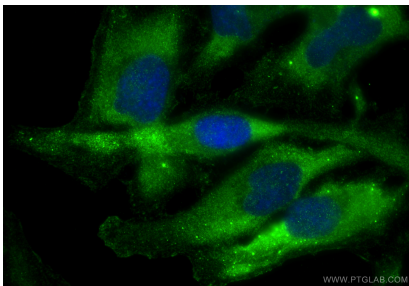
Immunohistochemical analysis of paraffin-embedded human lung cancer tissue slide using 11162-1-AP (EIF2S3 antibody) at dilution of 1:200 (under 10x lens. Heat mediated antigen retrieval with Tris-EDTA buffer (pH 9.0). This data was developed using the same antibody clone with 11162-1-PBS in a different storage buffer formulation.



mouse thymus tissue were subjected to SDS PAGE followed by western blot with 11162-1-AP (EIF2S3 antibody) at dilution of 1:1000 incubated at room temperature for 1.5 hours. This data was developed using the same antibody clone with 11162-1-PBS in a different storage buffer formulation.



IP result of anti-EIF2S3 (IP:11162-1-AP, 4ug; Detection:11162-1-AP 1:500) with HeLa cells lysate 2800ug. This data was developed using the same antibody clone with 11162-1-PBS in a different storage buffer formulation.



Immunofluorescent analysis of (-20°C Ethanol) fixed HeLa cells using EIF2S3 antibody (11162-1-AP) at dilution of 1:400 and CoraLite®488-Conjugated Goat Anti-Rabbit IgG(H+L) (SA00013-2). This data was developed using the same antibody clone with 11162-1-PBS in a different storage buffer formulation.