

For Research Use Only

PRPF8 Polyclonal antibody

Catalog Number: 11171-1-AP **9 Publications**



Basic Information

Catalog Number: 11171-1-AP	GenBank Accession Number: BC064370	Purification Method: Antigen affinity purification
Size: 150ul , Concentration: 500 µg/ml by Nanodrop and 267 µg/ml by Bradford method using BSA as the standard;	GeneID (NCBI): 10594	Recommended Dilutions: WB 1:500-1:2000 IP 0.5-4.0 ug for IP and 1:500-1:1000 for WB
Source: Rabbit	Full Name: PRP8 pre-mRNA processing factor 8 homolog (<i>S. cerevisiae</i>)	
Isotype: IgG	Calculated MW: 274 kDa	
Immunogen Catalog Number: AG1652	Observed MW: 220 kDa	

Applications

Tested Applications: IP, WB, ELISA	Positive Controls:
Cited Applications: IP, RIP, WB	WB: Jurkat cells, K-562 cells, HeLa cells, human placenta tissue
Species Specificity: human	IP: HeLa cells,
Cited Species: human, mouse	

Background Information

PRPF8, a 220kd protein, is a component of mammalian spliceosomes, large multiprotein complexes involved in the removal of introns from mRNA precursor. It has a central structural role in the architecture of the U5 small nuclear ribonucleoprotein (snRNP) particle.

Notable Publications

Author	Pubmed ID	Journal	Application
Zhe Chen	28878014	J Biol Chem	IP
Adam S Adler	24788092	Genes Dev	WB
Shuai Hou	31216022	Nucleic Acids Res	WB

Storage

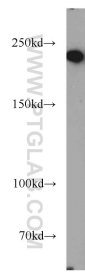
Storage:
Store at -20°C. Stable for one year after shipment.
Storage Buffer:
PBS with 0.02% sodium azide and 50% glycerol pH 7.3.
Aliquoting is unnecessary for -20°C storage

*** 20ul sizes contain 0.1% BSA

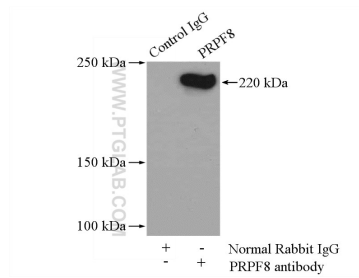
For technical support and original validation data for this product please contact:
T: 1 (888) 4PTGLAB (1-888-478-4522) (toll free in USA), or 1(312) 455-8498 (outside USA)
E: proteintech@ptglab.com
W: ptglab.com

This product is exclusively available under Proteintech Group brand and is not available to purchase from any other manufacturer.

Selected Validation Data



Jurkat cells were subjected to SDS PAGE followed by western blot with 11171-1-AP (PRPF8 antibody) at dilution of 1:1000 incubated at room temperature for 1.5 hours.



IP Result of anti-PRPF8 (IP:11171-1-AP, 4ug; Detection:11171-1-AP 1:500) with HeLa cells lysate 2000ug.