

For Research Use Only

EAF2 Polyclonal antibody

Catalog Number: 11172-1-AP

2 Publications



Basic Information

Catalog Number:

11172-1-AP

Size:

150ul, Concentration: 750 ug/ml by Nanodrop and 400 ug/ml by Bradford method using BSA as the standard;

Source:

Rabbit

Isotype:

IgG

Immunogen Catalog Number:

AG1637

GenBank Accession Number:

BC014209

GeneID (NCBI):

55840

UNIPROT ID:

Q96CJ1

Full Name:

ELL associated factor 2

Calculated MW:

42 kDa

Observed MW:

45 kDa

Purification Method:

Antigen affinity purification

Recommended Dilutions:

WB 1:500-1:2000

IHC 1:50-1:500

IF/ICC 1:20-1:200

Applications

Tested Applications:

WB, IHC, IF/ICC, ELISA

Cited Applications:

WB, IHC, IP

Species Specificity:

human, mouse, rat

Cited Species:

human, mouse

Note-IHC: suggested antigen retrieval with TE buffer pH 9.0; (*) Alternatively, antigen retrieval may be performed with citrate buffer pH 6.0

Positive Controls:

WB : HEK-293 cells, mouse kidney tissue

IHC : human breast cancer tissue,

IF/ICC : HepG2 cells,

Background Information

ELL associated factor 1 and ELL associated factor 2 (EAF1/2 factors) are reported to play important roles in tumor suppression and embryogenesis. The tumor suppressor EAF2 is regulated by androgen signaling and associated with prostate cancer. Eaf factors have been revealed to modulate mesoderm and neural patterning by inhibiting canonical Wnt signaling, and high activity of canonical Wnt/ β -catenin is revealed in eaf morphants (PMID: 23364330). Catalog# 11172-1-AP is a rabbit polyclonal antibody raised against the full-length of human EAF2.

Notable Publications

Author	Pubmed ID	Journal	Application
Tianyu Cao	38969982	Biol. Proc. Online	WB, IHC
Jiawei Zhao	38218188	Cell	WB, IP

Storage

Storage:

Store at -20°C. Stable for one year after shipment.

Storage Buffer:

PBS with 0.02% sodium azide and 50% glycerol pH 7.3.

Aliquoting is unnecessary for -20°C storage

*** 20ul sizes contain 0.1% BSA

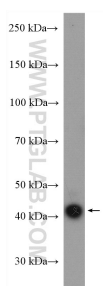
For technical support and original validation data for this product please contact:

T: 1 (888) 4PTGLAB (1-888-478-4522) (toll free in USA), or 1(312) 455-8498 (outside USA)

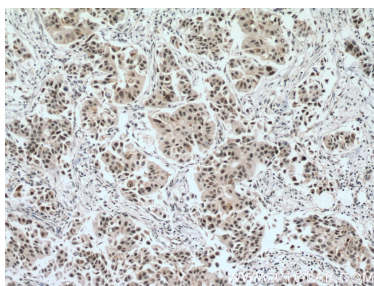
E: proteintech@ptglab.com
W: ptglab.com

This product is exclusively available under Proteintech Group brand and is not available to purchase from any other manufacturer.

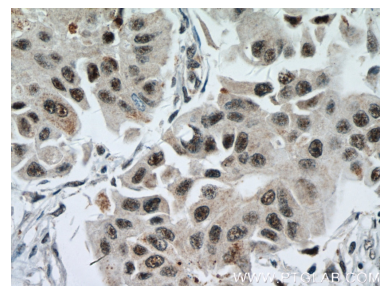
Selected Validation Data



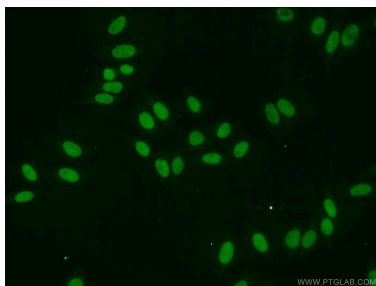
HEK-293 cells were subjected to SDS PAGE followed by western blot with 11172-1-AP (EAF2 antibody) at dilution of 1:1000 incubated at room temperature for 1.5 hours.



Immunohistochemical analysis of paraffin-embedded human breast cancer tissue slide using 11172-1-AP (EAF2 antibody) at dilution of 1:200 (under 10x lens. Heat mediated antigen retrieval with Tris-EDTA buffer (pH 9.0).



Immunohistochemical analysis of paraffin-embedded human breast cancer tissue slide using 11172-1-AP (EAF2 antibody) at dilution of 1:200 (under 40x lens. Heat mediated antigen retrieval with Tris-EDTA buffer (pH 9.0).



Immunofluorescent analysis of HepG2 cells using 11172-1-AP (EAF2 antibody) at dilution of 1:50 and Alexa Fluor 488-conjugated Goat Anti-Rabbit IgG(H+L).