

For Research Use Only

EXOSC10 Polyclonal antibody

Catalog Number: 11178-1-AP

Featured Product

7 Publications



Basic Information

Catalog Number:

11178-1-AP

Size:

150ul, Concentration: 200 ug/ml by Nanodrop and 133 ug/ml by Bradford method using BSA as the standard;

Source:

Rabbit

Isotype:

IgG

Immunogen Catalog Number:

AG1666

GenBank Accession Number:

BC039901

GeneID (NCBI):

5394

UNIPROT ID:

Q01780

Full Name:

exosome component 10

Calculated MW:

98 kDa

Observed MW:

100 kDa

Purification Method:

Antigen affinity purification

Recommended Dilutions:

WB 1:500-1:2000

IP 0.5-4.0 ug for 1.0-3.0 mg of total protein lysate

IHC 1:20-1:200

IF/ICC 1:20-1:200

Applications

Tested Applications:

WB, IHC, IF/ICC, IP, ELISA

Cited Applications:

WB, IF, IP, ColP, RIP

Species Specificity:

human, mouse

Cited Species:

human, mouse

Note-IHC: suggested antigen retrieval with TE buffer pH 9.0; (*) Alternatively, antigen retrieval may be performed with citrate buffer pH 6.0

Positive Controls:

WB: HeLa cells,

IP: MCF-7 cells,

IHC: human breast cancer tissue,

IF/ICC: NIH/3T3 cells,

Background Information

About 50% of patients with polymyositis/scleroderma (PM-Scl) overlap syndrome are reported to have autoantibodies to a nuclear nucleolar particle termed PM-Scl. Exosome component 10 (EXOSC10), also named autoantigen PM/Scl 2, is the 100 kDa antigen component of PM-Scl and is recognized by most sera of PM-Scl patients. EXOSC10 is strongly enriched in the nucleolus and a small amount has been found in cytoplasm supporting the existence of a nucleolar RNA exosome complex form. As a putative catalytic component of the RNA exosome complex which has 3'-5' exonuclease activity, EXOSC10 participates in a multitude of cellular RNA processing and degradation events.

Notable Publications

Author	Pubmed ID	Journal	Application
Tobias Moll	36241425	Life Sci Alliance	WB
Pauline Antonie Ulmke	33462115	Development	WB, RIP
Roy Matkovic	35013187	Nat Commun	IP

Storage

Storage:

Store at -20°C. Stable for one year after shipment.

Storage Buffer:

PBS with 0.02% sodium azide and 50% glycerol pH 7.3.

Aliquoting is unnecessary for -20°C storage

*** 20ul sizes contain 0.1% BSA

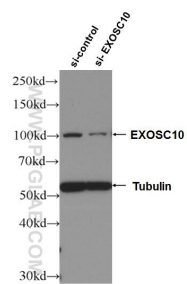
For technical support and original validation data for this product please contact:

T: 1 (888) 4PTGLAB (1-888-478-4522) (toll free in USA), or 1(312) 455-8498 (outside USA)

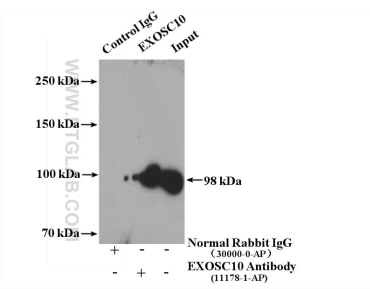
E: proteintech@ptglab.com
W: ptglab.com

This product is exclusively available under Proteintech Group brand and is not available to purchase from any other manufacturer.

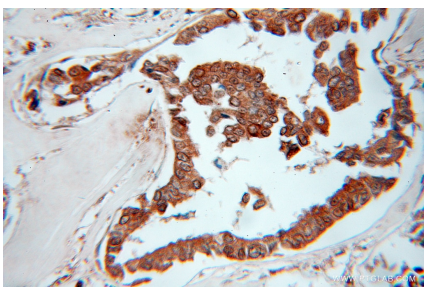
Selected Validation Data



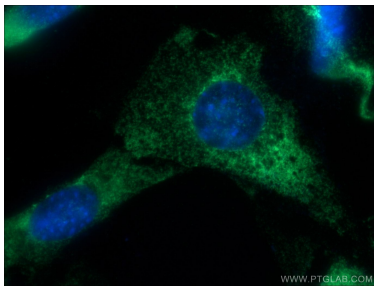
WB result of EXOSC10 antibody (11178-1-AP; 1:1000; incubated at room temperature for 1.5 hours) with sh-Control and sh-EXOSC10 transfected HeLa cells.



IP result of anti-EXOSC10 (IP:11178-1-AP, 4ug; Detection:11178-1-AP 1:300) with MCF-7 cells lysate 3200 ug.



Immunohistochemical analysis of paraffin-embedded human breast cancer using 11178-1-AP (EXOSC10 antibody) at dilution of 1:50 (under 40x lens).



Immunofluorescent analysis of NIH/3T3 cells using 11178-1-AP (EXOSC10 antibody) at dilution of 1:50 and Alexa Fluor 488-conjugated Goat Anti-Rabbit IgG(H+L).