

For Research Use Only

# TIMM17A Polyclonal antibody

Catalog Number: 11189-1-AP

Featured Product

7 Publications



## Basic Information

### Catalog Number:

11189-1-AP

### Size:

150ul, Concentration: 1000 ug/ml by Nanodrop;

### Source:

Rabbit

### Isotype:

IgG

### Immunogen Catalog Number:

AG1665

### GenBank Accession Number:

BC015098

### GeneID (NCBI):

10440

### UNIPROT ID:

Q99595

### Full Name:

translocase of inner mitochondrial membrane 17 homolog A (yeast)

### Calculated MW:

18 kDa

### Observed MW:

18 kDa

### Purification Method:

Antigen affinity purification

### Recommended Dilutions:

WB 1:5000-1:50000

IHC 1:50-1:500

## Applications

### Tested Applications:

WB, IHC, ELISA

### Cited Applications:

WB, IHC

### Species Specificity:

human, mouse, rat

### Cited Species:

human, rat

**Note-IHC: suggested antigen retrieval with TE buffer pH 9.0; (\*) Alternatively, antigen retrieval may be performed with citrate buffer pH 6.0**

### Positive Controls:

**WB** : HeLa cells, K-562 cells, MCF-7 cells, Neuro-2a cells, NIH/3T3 cells, U-251 cells

**IHC** : human breast cancer tissue,

## Notable Publications

Author	Pubmed ID	Journal	Application
Xuan Su	30431067	Int J Mol Med	WB, IHC
Frank Richter	30598479	J Cell Biol	WB
Manuela Magarin	27106802	J Mol Cell Cardiol	

## Storage

### Storage:

Store at -20°C. Stable for one year after shipment.

### Storage Buffer:

PBS with 0.02% sodium azide and 50% glycerol pH 7.3.

Aliquoting is unnecessary for -20°C storage

\*\*\* 20ul sizes contain 0.1% BSA

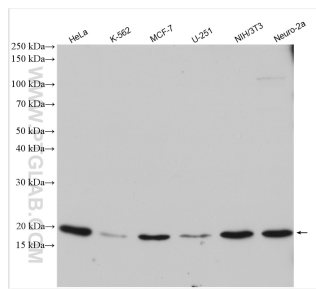
For technical support and original validation data for this product please contact:

T: 1 (888) 4PTGLAB (1-888-478-4522) (toll free in USA), or 1(312) 455-8498 (outside USA)

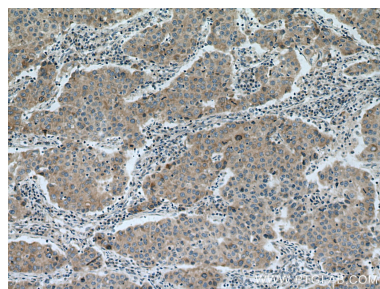
E: [proteintech@ptglab.com](mailto:proteintech@ptglab.com)  
W: [ptglab.com](http://ptglab.com)

This product is exclusively available under Proteintech Group brand and is not available to purchase from any other manufacturer.

# Selected Validation Data



Various lysates were subjected to SDS PAGE followed by western blot with 11189-1-AP (TIMM17A antibody) at dilution of 1:10000 incubated at room temperature for 1.5 hours.



Immunohistochemical analysis of paraffin-embedded human breast cancer tissue slide using 11189-1-AP (TIMM17A antibody) at dilution of 1:200 (under 10x lens). Heat mediated antigen retrieval with Tris-EDTA buffer (pH 9.0).