

For Research Use Only

PSMC1 Polyclonal antibody

Catalog Number: 11196-1-AP

6 Publications



Basic Information

Catalog Number:

11196-1-AP

Size:

150ul, Concentration: 350 ug/ml by Nanodrop and 240 ug/ml by Bradford method using BSA as the standard;

Source:

Rabbit

Isotype:

IgG

Immunogen Catalog Number:

AG1677

GenBank Accession Number:

BC016368

GeneID (NCBI):

5700

UNIPROT ID:

P62191

Full Name:

proteasome (prosome, macropain)

26S subunit, ATPase, 1

Calculated MW:

49 kDa

Observed MW:

52-57 kDa

Purification Method:

Antigen affinity purification

Recommended Dilutions:

WB 1:500-1:2000

IHC 1:50-1:500

Applications

Tested Applications:

WB, IHC, ELISA

Cited Applications:

WB

Species Specificity:

human, mouse, rat

Cited Species:

human, mouse, rat

Note-IHC: suggested antigen retrieval with TE buffer pH 9.0; (*) Alternatively, antigen retrieval may be performed with citrate buffer pH 6.0

Positive Controls:

WB : mouse brain tissue, A549 cells, HeLa cells, Jurkat cells, mouse lung tissue

IHC : mouse cerebellum tissue,

Background Information

PSMC1(26S protease regulatory subunit 4) is also named as p26s4 and belongs to the AAA ATPase family. The 26S protease is involved in the ATP-dependent degradation of ubiquitinated proteins. The regulatory (or ATPase) complex confers ATP dependency and substrate specificity to the 26S complex.

Notable Publications

Author	Pubmed ID	Journal	Application
Jayashree Chadchankar	31703099	PLoS One	WB
Diego Sbardella	29594388	Cell Mol Life Sci	
Yu Feng	39138149	Cell Death Dis	WB

Storage

Storage:

Store at -20°C. Stable for one year after shipment.

Storage Buffer:

PBS with 0.02% sodium azide and 50% glycerol pH 7.3.

Aliquoting is unnecessary for -20°C storage

*** 20ul sizes contain 0.1% BSA

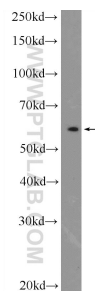
For technical support and original validation data for this product please contact:

T: 1 (888) 4PTGLAB (1-888-478-4522) (toll free in USA), or 1(312) 455-8498 (outside USA)

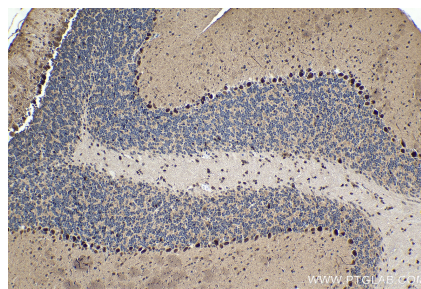
E: proteintech@ptglab.com
W: ptglab.com

This product is exclusively available under Proteintech Group brand and is not available to purchase from any other manufacturer.

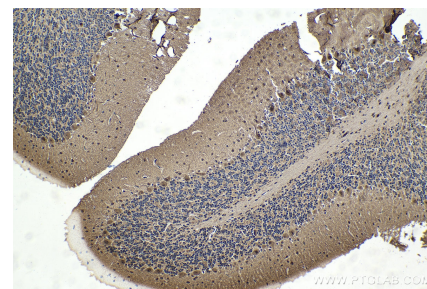
Selected Validation Data



mouse brain tissue were subjected to SDS PAGE followed by western blot with 11196-1-AP (PSMC1 Antibody) at dilution of 1:1000 incubated at room temperature for 1.5 hours.



Immunohistochemical analysis of paraffin-embedded mouse cerebellum tissue slide using 11196-1-AP (PSMC1 antibody) at dilution of 1:200 (under 10x lens). Heat mediated antigen retrieval with Tris-EDTA buffer (pH 9.0).



Immunohistochemical analysis of paraffin-embedded rat cerebellum tissue slide using 11196-1-AP (PSMC1 antibody) at dilution of 1:200 (under 10x lens). Heat mediated antigen retrieval with Tris-EDTA buffer (pH 9.0).