

For Research Use Only

# FXYP2 Polyclonal antibody

Catalog Number:11198-1-AP

7 Publications



## Basic Information

### Catalog Number:

11198-1-AP

### Size:

150ul , Concentration: 300 ug/ml by Nanodrop and 147 ug/ml by Bradford method using BSA as the standard;

### Source:

Rabbit

### Isotype:

IgG

### Immunogen Catalog Number:

AG1676

### GenBank Accession Number:

BC013289

### GeneID (NCBI):

486

### UNIPROT ID:

P54710

### Full Name:

FXYP domain containing ion transport regulator 2

### Calculated MW:

7 kDa

### Observed MW:

7-10 kDa

### Purification Method:

Antigen affinity purification

### Recommended Dilutions:

WB: 1:500-1:2000

IHC: 1:20-1:200

## Applications

### Tested Applications:

WB, IHC, ELISA

### Cited Applications:

WB, IHC, IF

### Species Specificity:

human, rat

### Cited Species:

human, mouse, rat

### Positive Controls:

WB : human kidney tissue, human liver tissue, human skeletal muscle tissue

IHC : human pancreas cancer tissue,

**Note-IHC: suggested antigen retrieval with TE buffer pH 9.0; (\*) Alternatively, antigen retrieval may be performed with citrate buffer pH 6.0**

## Background Information

FXYP2 (FXYP domain-containing ion transport regulator 2), also known as the gamma-subunit of the NaK-ATPase, belongs to the FXYP family which has been proposed to be the regulators of Na, K-ATPase function by lowering affinities of the system for potassium and sodium. The expression of FXYP2 is most abundant in kidney, while it is also detected in several other tissues like placenta, pancreas, and dorsal root ganglia (DRGs). Three splice variants of FXYP2 have been reported in mouse kidney, namely FXYP2  $\gamma$  a,  $\gamma$  b, and  $\gamma$  c. FXYP2  $\gamma$  a has been identified as a pancreatic beta cell-specific biomarker. This antibody can recognize all three isoforms of FXYP2.

## Notable Publications

Author	Pubmed ID	Journal	Application
Zedan Zhang	36313180	J Immunol Res	WB,IF
Hwee-Yeong Ng	34836340	Nutrients	IHC
Laure-Anne Teuwen	34133923	Cell Rep	IF

## Storage

### Storage:

Store at -20°C. Stable for one year after shipment.

### Storage Buffer:

PBS with 0.02% sodium azide and 50% glycerol, pH7.3

Aliquoting is unnecessary for -20°C storage

\*\*\* 20ul sizes contain 0.1% BSA

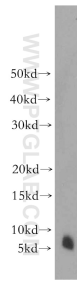
For technical support and original validation data for this product please contact:

T: 1 (888) 4PTGLAB (1-888-478-4522) (toll free in USA), or 1(312) 455-8498 (outside USA)

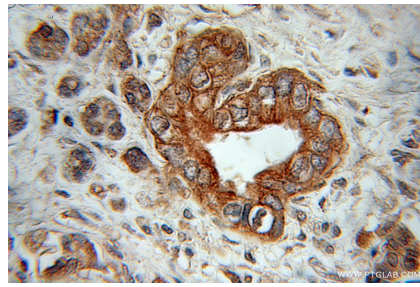
E: proteintech@ptglab.com  
W: ptglab.com

This product is exclusively available under Proteintech Group brand and is not available to purchase from any other manufacturer.

## Selected Validation Data



human kidney tissue were subjected to SDS PAGE followed by western blot with 11198-1-AP (FXVD2 antibody) at dilution of 1:1000 incubated at room temperature for 1.5 hours.



Immunohistochemical analysis of paraffin-embedded human pancreas cancer using 11198-1-AP (FXVD2 antibody) at dilution of 1:100 (under 10x lens).