

For Research Use Only

ORM1/2 Polyclonal antibody

Catalog Number: 11199-1-AP

5 Publications



Basic Information

Catalog Number:

11199-1-AP

Size:

150ul, Concentration: 447 ug/ml by Bradford method using BSA as the standard;

Source:

Rabbit

Isotype:

IgG

Immunogen Catalog Number:

AG1667

GenBank Accession Number:

BC015964

GeneID (NCBI):

5005

UNIPROT ID:

P19652

Full Name:

orosomucoid 2

Calculated MW:

24 kDa

Observed MW:

24-28 kDa, 41-47 kDa

Purification Method:

Antigen affinity purification

Recommended Dilutions:

WB 1:500-1:1000

IP 0.5-4.0 ug for 1.0-3.0 mg of total protein lysate

IHC 1:50-1:500

IF/ICC 1:200-1:800

Applications

Tested Applications:

WB, IHC, IF/ICC, IP, ELISA

Cited Applications:

WB, IHC, ChIP

Species Specificity:

human

Cited Species:

human, mouse

Positive Controls:

WB : L02 cells, A549 cells

IP : L02 cells,

IHC : human liver tissue,

IF/ICC : HEK-293 cells,

Note-IHC: suggested antigen retrieval with TE buffer pH 9.0; (*) Alternatively, antigen retrieval may be performed with citrate buffer pH 6.0

Background Information

ORM2, also named as AGP2 and OMD 2, belongs to the calycin superfamily and Lipocalin family. It functions as transport protein in the blood stream. ORM2 binds various hydrophobic ligands in the interior of its beta-barrel domain. It also binds synthetic drugs and influences their distribution and availability. ORM2 appears to function in modulating the activity of the immune system during the acute-phase reaction. ORM2 is one of the conserved endoplasmic reticulum membrane proteins which regulating lipid homeostasis and protein quality control. This antibody can recognize both ORM1 and ORM2.

Notable Publications

Author	Pubmed ID	Journal	Application
Kang Un-Beom UB	20346108	BMC Cancer	WB
Kyle Lewis	28559429	Mol Cell Biol	WB
Hui Zhang	39168366	Am J Pathol	ChIP

Storage

Storage:

Store at -20°C. Stable for one year after shipment.

Storage Buffer:

PBS with 0.02% sodium azide and 50% glycerol pH 7.3.

Aliquoting is unnecessary for -20°C storage

*** 20ul sizes contain 0.1% BSA

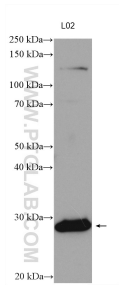
For technical support and original validation data for this product please contact:

T: 1 (888) 4PTGLAB (1-888-478-4522) (toll free in USA), or 1(312) 455-8498 (outside USA)

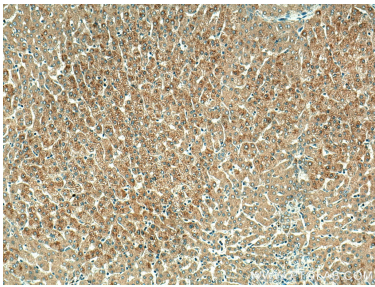
E: proteintech@ptglab.com
W: ptglab.com

This product is exclusively available under Proteintech Group brand and is not available to purchase from any other manufacturer.

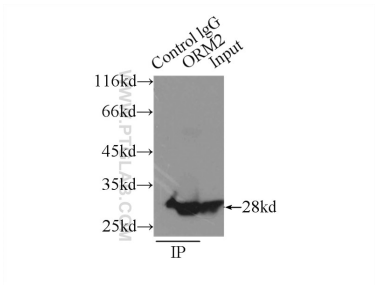
Selected Validation Data



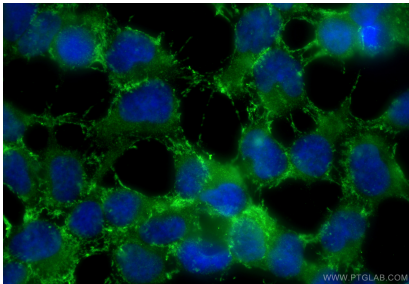
L02 cells were subjected to SDS PAGE followed by western blot with 11199-1-AP (ORM2 antibody) at dilution of 1:800 incubated at room temperature for 1.5 hours.



Immunohistochemical analysis of paraffin-embedded human liver tissue slide using 11199-1-AP (ORM1/2 antibody) at dilution of 1:200 (under 10x lens). Heat mediated antigen retrieval with Tris-EDTA buffer (pH 9.0).



IP result of anti-ORM1/2 (IP:11199-1-AP, 3ug; Detection:11199-1-AP 1:800) with L02 cells lysate 2500ug.



Immunofluorescent analysis of (-20°C Ethanol) fixed HEK-293 cells using ORM1/2 antibody (11199-1-AP) at dilution of 1:400 and CoraLite®488-Conjugated Goat Anti-Rabbit IgG(H+L) (SA00013-2).