

For Research Use Only

BAP31 Polyclonal antibody

Catalog Number: 11200-1-AP

Featured Product

25 Publications



Basic Information

Catalog Number:

11200-1-AP

Size:

150ul, Concentration: 600 ug/ml by Nanodrop;

Source:

Rabbit

Isotype:

IgG

Immunogen Catalog Number:

AG1668

GenBank Accession Number:

BC014323

GeneID (NCBI):

10134

UNIPROT ID:

P51572

Full Name:

B-cell receptor-associated protein 31

Calculated MW:

28 kDa

Observed MW:

28 kDa

Purification Method:

Antigen affinity purification

Recommended Dilutions:

WB: 1:5000-1:50000

IP: 0.5-4.0 ug for 1.0-3.0 mg of total protein lysate

IHC: 1:50-1:500

IF/ICC: 1:50-1:500

Applications

Tested Applications:

WB, IHC, IF/ICC, IP, ELISA

Cited Applications:

WB, IHC, IF, IP

Species Specificity:

human, mouse, rat

Cited Species:

human, mouse, rat

Note-IHC: suggested antigen retrieval with TE buffer pH 9.0; (*) Alternatively, antigen retrieval may be performed with citrate buffer pH 6.0

Positive Controls:

WB: A431 cells, human placenta tissue, HEK-293 cells, HeLa cells, mouse placenta tissue, MCF-7 cells, THP-1 cells, mouse brain tissue, mouse liver tissue, rat brain tissue, rat liver tissue

IP: A431 cells,

IHC: human breast cancer tissue, human colon tissue, human colon cancer tissue

IF/ICC: HeLa cells,

Background Information

BAP31, also known as BCAP31, is a chaperone protein abundant in the endoplasmic reticulum (ER). BAP31 plays a role in the export of secreted proteins in the ER, the recognition of abnormally folded proteins, and their targeting to the ER-associated-degradation (ERAD). CDIP1 and BAP31 interact upon ER stress to regulate the mitochondrial apoptosis pathway (PMID: 24139803). It also serves as a cargo receptor for the export of transmembrane proteins. BAP31 may be involved in apoptosis.

Notable Publications

Author	Pubmed ID	Journal	Application
Guo-Xun Li	36210579	Int J Biochem Cell Biol	WB
Shiya Cheng	36264786	Science	IF
Chengfeng Merriman	31591269	J Biol Chem	WB,IF

Storage

Storage:

Store at -20°C. Stable for one year after shipment.

Storage Buffer:

PBS with 0.02% sodium azide and 50% glycerol, pH7.3

Aliquoting is unnecessary for -20°C storage

*** 20ul sizes contain 0.1% BSA

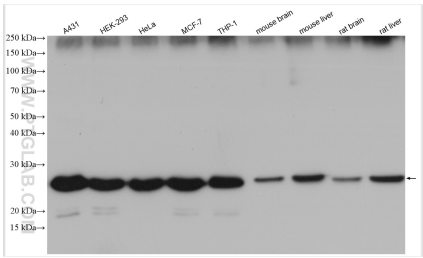
For technical support and original validation data for this product please contact:

T: 1 (888) 4PTGLAB (1-888-478-4522) (toll free in USA), or 1(312) 455-8498 (outside USA)

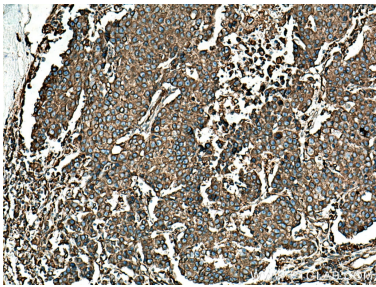
E: proteintech@ptglab.com
W: ptglab.com

This product is exclusively available under Proteintech Group brand and is not available to purchase from any other manufacturer.

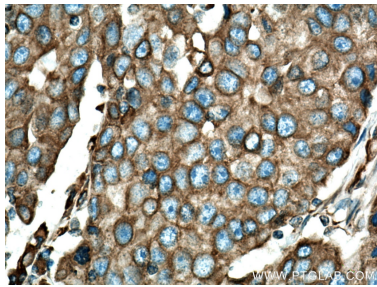
Selected Validation Data



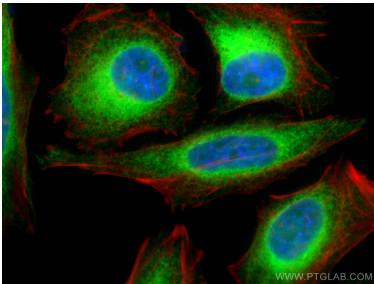
Various lysates were subjected to SDS PAGE followed by western blot with 11200-1-AP (BAP31 antibody) at dilution of 1:20000 incubated at room temperature for 1.5 hours.



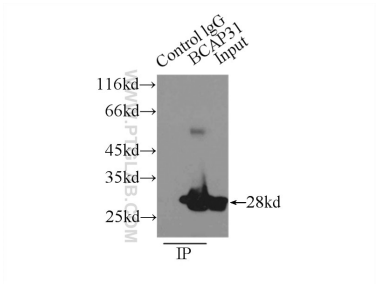
Immunohistochemical analysis of paraffin-embedded human breast cancer tissue slide using 11200-1-AP (BAP31 antibody) at dilution of 1:200 (under 10x lens). Heat mediated antigen retrieval with Tris-EDTA buffer (pH 9.0).



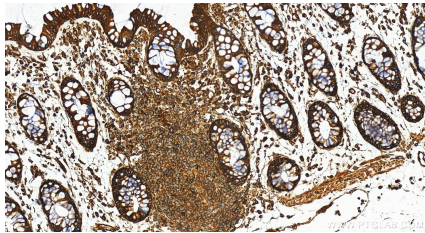
Immunohistochemical analysis of paraffin-embedded human breast cancer tissue slide using 11200-1-AP (BAP31 antibody) at dilution of 1:200 (under 40x lens). Heat mediated antigen retrieval with Tris-EDTA buffer (pH 9.0).



Immunofluorescent analysis of (4% PFA) fixed HeLa cells using BAP31 antibody (11200-1-AP) at dilution of 1:0 and Coralite®488-Conjugated AffiniPure Goat Anti-Rabbit IgG(H+L), phalloidine stains F-actin (red).



IP result of anti-BAP31 (IP:11200-1-AP, 3ug; Detection:11200-1-AP 1:1000) with A431 cells lysate 3300ug.



Immunohistochemical analysis of paraffin-embedded human colon tissue slide using 11200-1-AP (BAP31 antibody) at dilution of 1:4000 (under 20x lens). Heat mediated antigen retrieval with Tris-EDTA buffer (pH 9.0).