

For Research Use Only

Syntaxin 16 Polyclonal antibody

Catalog Number: 11201-1-AP **5 Publications**



Basic Information

Catalog Number: 11201-1-AP	GenBank Accession Number: BC019042	Purification Method: Antigen affinity purification
Size: 150ul , Concentration: 333 µg/ml by Nanodrop and 333 µg/ml by Bradford method using BSA as the standard;	GeneID (NCBI): 8675	Recommended Dilutions: WB 1:500-1:2000 IHC 1:20-1:200
Source: Rabbit	Full Name: syntaxin 16	
Isotype: IgG	Calculated MW: 37 kDa	
Immunogen Catalog Number: AG1657	Observed MW: 37 kDa	

Applications

Tested Applications: IHC, WB, ELISA	Positive Controls: WB : HEK-293 cells, HepG2 cells
Cited Applications: IF, WB	IHC : human colon cancer tissue,
Species Specificity: human, mouse, rat	
Cited Species: human, mouse	

Note-IHC: suggested antigen retrieval with TE buffer pH 9.0; (*) Alternatively, antigen retrieval may be performed with citrate buffer pH 6.0

Background Information

Syntaxin 16 (STX16), also named as SYN16, belongs to the syntaxin family. Syntaxins are target membrane SNAREs (Soluble NSF attachment protein receptors) which are membrane components that determine the specificity of the docking and fusion of vesicles to target membranes. STX16 is localized to the Golgi apparatus.

Notable Publications

Author	Pubmed ID	Journal	Application
Linda Cruz	27795424	J Virol	WB
Sean-Patrick Riechers	26908611	Hum Mol Genet	WB
Gustaf E Rydell	24703428	Traffic	WB

Storage

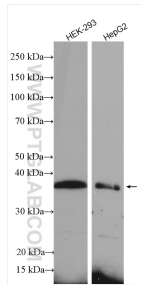
Storage:
Store at -20°C. Stable for one year after shipment.
Storage Buffer:
PBS with 0.02% sodium azide and 50% glycerol pH 7.3.
Aliquoting is unnecessary for -20°C storage

***** 20ul sizes contain 0.1% BSA**

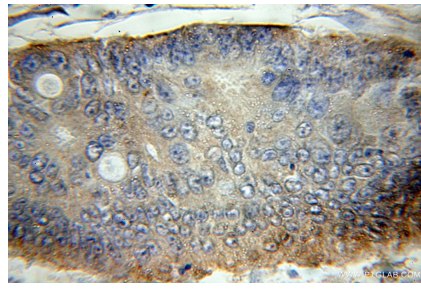
For technical support and original validation data for this product please contact:
T: 1 (888) 4PTGLAB (1-888-478-4522) (toll free in USA), or 1(312) 455-8498 (outside USA)
E: proteintech@ptglab.com
W: ptglab.com

This product is exclusively available under Proteintech Group brand and is not available to purchase from any other manufacturer.

Selected Validation Data



Various lysates were subjected to SDS PAGE followed by western blot with 11201-1-AP (Syntaxin 16 antibody) at dilution of 1:1000 incubated at room temperature for 1.5 hours.



Immunohistochemical analysis of paraffin-embedded human colon cancer using 11201-1-AP (Syntaxin 16 antibody) at dilution of 1:50 (under 10x lens).