

For Research Use Only

Alpha Parvin/Actopaxin Polyclonal antibody

Catalog Number: 11202-1-AP

Featured Product

3 Publications



Basic Information

Catalog Number:

11202-1-AP

Size:

150ul, Concentration: 133 ug/ml by Nanodrop and 133 ug/ml by Bradford method using BSA as the standard;

Source:

Rabbit

Isotype:

IgG

Immunogen Catalog Number:

AG1694

GenBank Accession Number:

BC016713

GeneID (NCBI):

55742

UNIPROT ID:

Q9NVD7

Full Name:

parvin, alpha

Calculated MW:

42 kDa

Observed MW:

42-45 kDa

Purification Method:

Antigen affinity purification

Recommended Dilutions:

WB 1:500-1:1000

IHC 1:20-1:200

Applications

Tested Applications:

WB, IHC, ELISA

Cited Applications:

WB, IHC

Species Specificity:

human, mouse, rat

Cited Species:

human, mouse

Note-IHC: suggested antigen retrieval with TE buffer pH 9.0; (*) Alternatively, antigen retrieval may be performed with citrate buffer pH 6.0

Positive Controls:

WB : human liver tissue, Jurkat cells, HeLa cells, human kidney tissue

IHC : human prostate cancer tissue,

Notable Publications

Author	Pubmed ID	Journal	Application
Alessandro Bortolami	36207442	Cell Death Differ	WB
Cong Huang	33718092	Transl Androl Urol	IHC
Midori Takeda	39329755	Cells	IHC

Storage

Storage:

Store at -20°C. Stable for one year after shipment.

Storage Buffer:

PBS with 0.02% sodium azide and 50% glycerol pH 7.3.

Aliquoting is unnecessary for -20°C storage

*** 20ul sizes contain 0.1% BSA

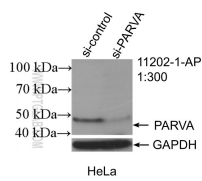
For technical support and original validation data for this product please contact:

T: 1 (888) 4PTGLAB (1-888-478-4522) (toll free in USA), or 1(312) 455-8498 (outside USA)

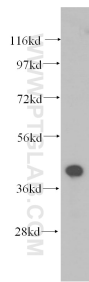
E: proteintech@ptglab.com
W: ptglab.com

This product is exclusively available under Proteintech Group brand and is not available to purchase from any other manufacturer.

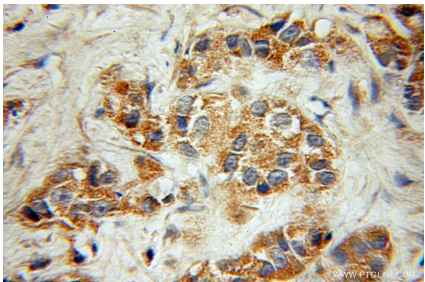
Selected Validation Data



WB result of α -Parvin/Actopaxin antibody (11202-1-AP; 1:300; incubated at room temperature for 1.5 hours) with sh-Control and sh- α -Parvin/Actopaxin transfected HeLa cells.



human liver tissue were subjected to SDS PAGE followed by western blot with 11202-1-AP (Actopaxin antibody) at dilution of 1:500 incubated at room temperature for 1.5 hours.



Immunohistochemical analysis of paraffin-embedded human prostate cancer using 11202-1-AP (Actopaxin antibody) at dilution of 1:50 (under 10x lens).