

For Research Use Only

ENO1 Polyclonal antibody

Catalog Number: 11204-1-AP

Featured Product

78 Publications



Basic Information

Catalog Number:

11204-1-AP

Size:

150ul, Concentration: 600 ug/ml by Nanodrop;

Source:

Rabbit

Isotype:

IgG

Immunogen Catalog Number:

AG1692

GenBank Accession Number:

BC015641

GeneID (NCBI):

2023

ENSEMBL Gene ID:

ENSG00000074800

UNIPROT ID:

P06733

Full Name:

enolase 1, (alpha)

Calculated MW:

47 kDa

Observed MW:

47 kDa

Purification Method:

Antigen affinity purification

Recommended Dilutions:

WB 1:2000-1:12000

IP 0.5-4.0 ug for 1.0-3.0 mg of total protein lysate

IHC 1:500-1:2000

IF/ICC 1:50-1:500

Applications

Tested Applications:

WB, IHC, IF/ICC, FC (Intra), IP, ELISA

Cited Applications:

WB, IHC, IF, IP, CoIP

Species Specificity:

human, mouse

Cited Species:

human, mouse, rat

Note-IHC: suggested antigen retrieval with TE buffer pH 9.0; (*) Alternatively, antigen retrieval may be performed with citrate buffer pH 6.0

Positive Controls:

WB : HeLa cells, human skeletal muscle tissue, mouse skeletal muscle tissue, L02 cells, PC-3 cells, SGC-7901 cells, mouse liver tissue

IP : mouse skeletal muscle tissue,

IHC : human stomach cancer tissue, human colon cancer tissue, human liver cancer tissue

IF/ICC : HepG2 cells,

Background Information

Enolase is an important glycolytic enzyme involved in the interconversion of 2-phosphoglycerate to phosphoenolpyruvate. Enolase were down-regulated in oxLDL-treated cells or in VLDL-treated cells. And it identified which are associated with glucose metabolism were down-regulated in the process of foam cells formation. (PMID: 19756395)

Notable Publications

Author	Pubmed ID	Journal	Application
Bing Sun	27684953	PLoS One	WB
Si Gao	28910549	Can J Physiol Pharmacol	WB
Xiaoduan Li	34510316	Cell Biol Toxicol	WB, IHC

Storage

Storage:

Store at -20°C. Stable for one year after shipment.

Storage Buffer:

PBS with 0.02% sodium azide and 50% glycerol pH 7.3.

Aliquoting is unnecessary for -20°C storage

*** 20ul sizes contain 0.1% BSA

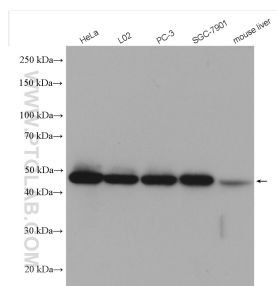
For technical support and original validation data for this product please contact:

T: 1 (888) 4PTGLAB (1-888-478-4522) (toll free in USA), or 1(312) 455-8498 (outside USA)

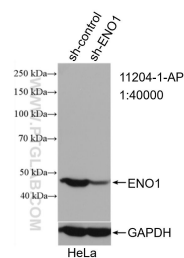
E: proteintech@ptglab.com
W: ptglab.com

This product is exclusively available under Proteintech Group brand and is not available to purchase from any other manufacturer.

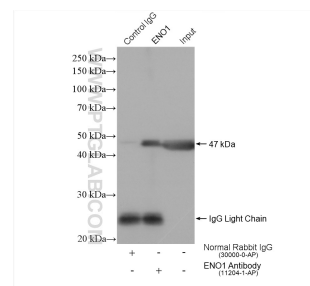
Selected Validation Data



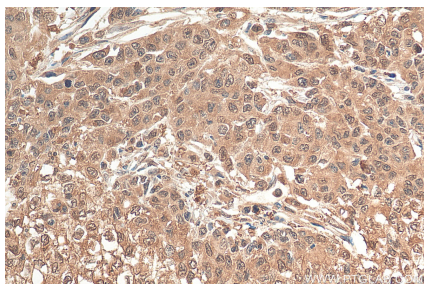
Various lysates were subjected to SDS PAGE followed by western blot with 11204-1-AP (ENO1 antibody) at dilution of 1:6000 incubated at room temperature for 1.5 hours.



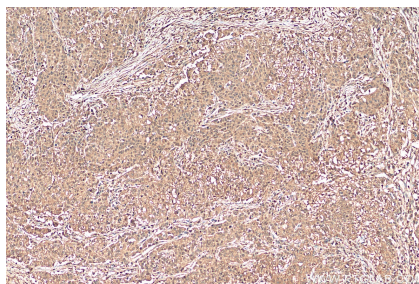
WB result of ENO1 antibody (11204-1-AP; 1:40000; incubated at room temperature for 1.5 hours) with sh-Control and sh-ENO1 transfected HeLa cells.



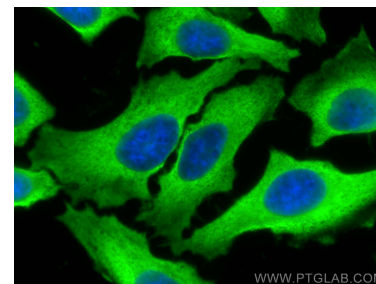
IP result of anti-ENO1 (IP:11204-1-AP, 4ug; Detection:11204-1-AP 1:8000) with mouse skeletal muscle tissue lysate 1280 ug.



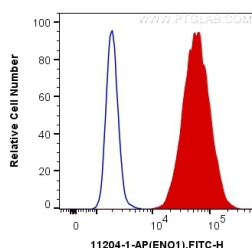
Immunohistochemical analysis of paraffin-embedded human stomach cancer tissue slide using 11204-1-AP (ENO1 antibody) at dilution of 1:1000 (under 40x lens). Heat mediated antigen retrieval with Tris-EDTA buffer (pH 9.0).



Immunohistochemical analysis of paraffin-embedded human stomach cancer tissue slide using 11204-1-AP (ENO1 antibody) at dilution of 1:1000 (under 10x lens). Heat mediated antigen retrieval with Tris-EDTA buffer (pH 9.0).



Immunofluorescent analysis of (-20°C Methanol) fixed HepG2 cells using ENO1 antibody (11204-1-AP) at dilution of 1:200 and CoraLite®488-Conjugated Goat Anti-Rabbit IgG(H+L).



1X10⁶ A549 cells were intracellularly stained with 0.2 ug Anti-Human ENO1 (11204-1-AP) and CoraLite®488-Conjugated Goat Anti-Rabbit IgG(H+L) at dilution 1:1000 (red), or 0.2 ug Control Antibody. Cells were fixed with 4% PFA and permeabilized with Flow Cytometry Perm Buffer (PF00011-C).