

For Research Use Only

RSU1 Polyclonal antibody

Catalog Number: 11207-1-AP

Featured Product

4 Publications



Basic Information

Catalog Number:

11207-1-AP

Size:

150ul, Concentration: 450 ug/ml by Nanodrop and 273 ug/ml by Bradford method using BSA as the standard;

Source:

Rabbit

Isotype:

IgG

Immunogen Catalog Number:

AG1693

GenBank Accession Number:

BC015644

GeneID (NCBI):

6251

UNIPROT ID:

Q15404

Full Name:

Ras suppressor protein 1

Calculated MW:

32 kDa

Observed MW:

32 kDa

Purification Method:

Antigen affinity purification

Recommended Dilutions:

WB 1:200-1:1000

IP 0.5-4.0 ug for 1.0-3.0 mg of total protein lysate

Applications

Tested Applications:

WB, IP, ELISA

Cited Applications:

WB, IHC

Species Specificity:

human, mouse

Cited Species:

human

Positive Controls:

WB : mouse placenta tissue, human bladder tissue

IP : human placenta tissue,

Notable Publications

Author	Pubmed ID	Journal	Application
Sajni Josson	24963047	Clin Cancer Res	WB, IHC
S Josson	25065597	Oncogene	WB
Koichi Fukuda	33891945	J Biol Chem	

Storage

Storage:

Store at -20°C. Stable for one year after shipment.

Storage Buffer:

PBS with 0.02% sodium azide and 50% glycerol pH 7.3.

Aliquoting is unnecessary for -20°C storage

*** 20ul sizes contain 0.1% BSA

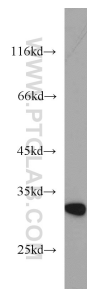
For technical support and original validation data for this product please contact:

T: 1 (888) 4PTGLAB (1-888-478-4522) (toll free in USA), or 1(312) 455-8498 (outside USA)

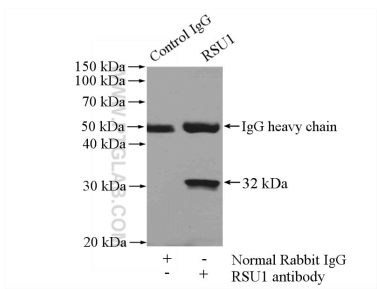
E: proteintech@ptglab.com
W: ptglab.com

This product is exclusively available under Proteintech Group brand and is not available to purchase from any other manufacturer.

Selected Validation Data



mouse placenta tissue were subjected to SDS PAGE followed by western blot with 11207-1-AP (RSU1 antibody) at dilution of 1:300 incubated at room temperature for 1.5 hours.



IP result of anti-RSU1 (IP:11207-1-AP, 4ug; Detection:11207-1-AP 1:300) with human placenta tissue lysate 1520ug.