

For Research Use Only

Pancreatic Lipase Polyclonal antibody

Catalog Number: 11209-1-AP

4 Publications



Basic Information

Catalog Number:

11209-1-AP

Size:

150ul, Concentration: 300 ug/ml by Nanodrop;

Source:

Rabbit

Isotype:

IgG

Immunogen Catalog Number:

AG1681

GenBank Accession Number:

BC014309

GeneID (NCBI):

5406

UNIPROT ID:

P16233

Full Name:

pancreatic lipase

Calculated MW:

52 kDa

Observed MW:

48-52 kDa

Purification Method:

Antigen affinity purification

Recommended Dilutions:

WB: 1:20000-1:100000

IHC: 1:500-1:2000

Applications

Tested Applications:

WB, IHC, ELISA

Cited Applications:

WB, IHC

Species Specificity:

human, mouse, rat

Cited Species:

human, mouse, pig

Note-IHC: suggested antigen retrieval with TE buffer pH 9.0; (*) Alternatively, antigen retrieval may be performed with citrate buffer pH 6.0

Positive Controls:

WB : mouse pancreas tissue, BxPC-3 cells, human pancreas tissue, rat pancreas tissue

IHC : mouse pancreas tissue, human pancreas cancer tissue, human pancreas tissue

Background Information

The pancreatic triacylglycerol lipase precursor (PNLIP), a 56 kDa protein secreted by the pancreas that is essential for the hydrolysis and absorption of long-chain triglyceride fatty acids in the intestine is located ~1 Mb upstream from the chromosome 10 peak (PMID:17890784). It is also named as PL, PTL and belongs to the AB hydrolase superfamily. It may potentially be involved in the pathophysiology of traumatic brain injury and may be implicated in the proliferation of astrocytes and the recovery of neurological outcomes (PMID:19760487). The full length protein has a signal peptide with 16 amino acid and a glycosylation site.

Notable Publications

Author	Pubmed ID	Journal	Application
Kyunghwa Baek	29538343	Int J Mol Sci	IHC
Olajumoke Akinsulire	31441521	JPEN J Parenter Enteral Nutr	WB
Yu An	40020626	Phytomedicine	WB

Storage

Storage:

Store at -20°C. Stable for one year after shipment.

Storage Buffer:

PBS with 0.02% sodium azide and 50% glycerol, pH7.3

Aliquoting is unnecessary for -20°C storage

*** 20ul sizes contain 0.1% BSA

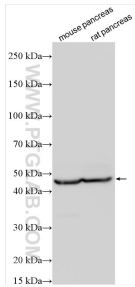
For technical support and original validation data for this product please contact:

T: 1 (888) 4PTGLAB (1-888-478-4522) (toll free in USA), or 1(312) 455-8498 (outside USA)

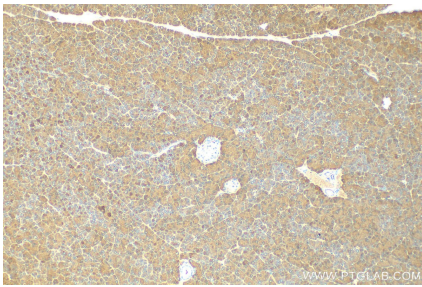
E: proteintech@ptglab.com
W: ptglab.com

This product is exclusively available under Proteintech Group brand and is not available to purchase from any other manufacturer.

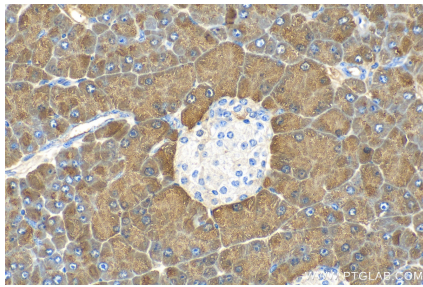
Selected Validation Data



Various lysates were subjected to SDS PAGE followed by western blot with 11209-1-AP (Pancreatic Lipase antibody) at dilution of 1:60000 incubated at room temperature for 1.5 hours.



Immunohistochemical analysis of paraffin-embedded mouse pancreas tissue slide using 11209-1-AP (Pancreatic Lipase antibody) at dilution of 1:1000 (under 10x lens). Heat mediated antigen retrieval with Tris-EDTA buffer (pH 9.0).



Immunohistochemical analysis of paraffin-embedded mouse pancreas tissue slide using 11209-1-AP (Pancreatic Lipase antibody) at dilution of 1:1000 (under 40x lens). Heat mediated antigen retrieval with Tris-EDTA buffer (pH 9.0).