

For Research Use Only

SUMF2 Polyclonal antibody

Catalog Number: 11210-1-AP

3 Publications



Basic Information

Catalog Number:

11210-1-AP

Size:

150ul, Concentration: 240 ug/ml by Nanodrop and 220 ug/ml by Bradford method using BSA as the standard;

Source:

Rabbit

Isotype:

IgG

Immunogen Catalog Number:

AG1711

GenBank Accession Number:

BC015600

GeneID (NCBI):

25870

UNIPROT ID:

Q8NB77

Full Name:

sulfatase modifying factor 2

Calculated MW:

34 kDa

Observed MW:

34 kDa

Purification Method:

Antigen affinity purification

Recommended Dilutions:

WB 1:1000-1:5000

IP 0.5-4.0 ug for 1.0-3.0 mg of total protein lysate

IHC 1:50-1:500

IF/ICC 1:50-1:500

Applications

Tested Applications:

WB, IHC, IF/ICC, IP, ELISA

Cited Applications:

WB, IHC

Species Specificity:

human, mouse, rat

Cited Species:

human, rat

Note-IHC: suggested antigen retrieval with TE buffer pH 9.0; (*) Alternatively, antigen retrieval may be performed with citrate buffer pH 6.0

Positive Controls:

WB : A431 cells, human skin tissue, human spleen tissue

IP : A431 cells, HeLa cells

IHC : human breast cancer tissue,

IF/ICC : A431 cells,

Notable Publications

Author	Pubmed ID	Journal	Application
Chuanfeng Fang	26722390	Int J Clin Exp Pathol	WB,IHC
Wei-Ting Kuo	39915362	Discov Oncol	IHC
Xiang Huang	39104534	Front Immunol	WB,IHC

Storage

Storage:

Store at -20°C. Stable for one year after shipment.

Storage Buffer:

PBS with 0.02% sodium azide and 50% glycerol, pH7.3

Aliquoting is unnecessary for -20°C storage

*** 20ul sizes contain 0.1% BSA

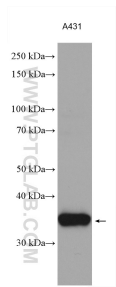
For technical support and original validation data for this product please contact:

T: 1 (888) 4PTGLAB (1-888-478-4522) (toll free in USA), or 1(312) 455-8498 (outside USA)

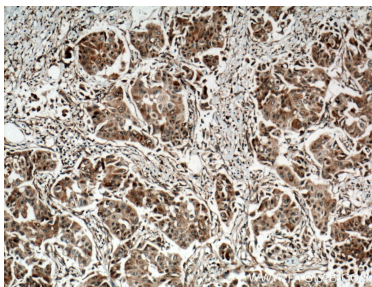
E: proteintech@ptglab.com
W: ptglab.com

This product is exclusively available under Proteintech Group brand and is not available to purchase from any other manufacturer.

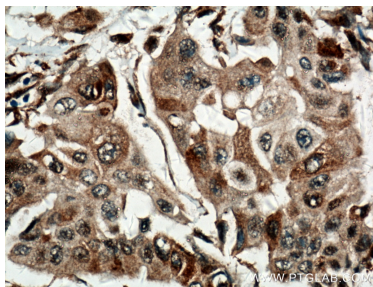
Selected Validation Data



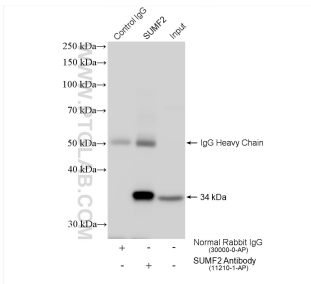
A431 cell lysates were subjected to SDS PAGE followed by western blot with 11210-1-AP (SUMF2 antibody) at dilution of 1:2500 incubated at room temperature for 1.5 hours.



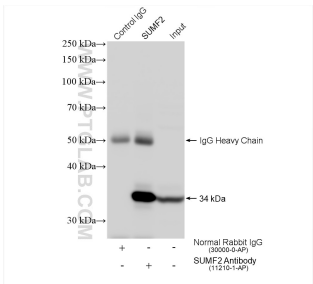
Immunohistochemical analysis of paraffin-embedded human breast cancer tissue slide using 11210-1-AP (SUMF2 antibody) at dilution of 1:200 (under 10x lens. Heat mediated antigen retrieval with Tris-EDTA buffer (pH 9.0).



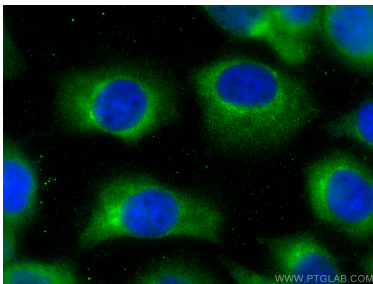
Immunohistochemical analysis of paraffin-embedded human breast cancer tissue slide using 11210-1-AP (SUMF2 antibody) at dilution of 1:200 (under 40x lens. Heat mediated antigen retrieval with Tris-EDTA buffer (pH 9.0).



IP result of anti-SUMF2 (IP:11210-1-AP, 4ug; Detection:11210-1-AP 1:2000) with A431 cells lysate 2640 ug.



IP result of anti-SUMF2 (IP:11210-1-AP, 4ug; Detection:11210-1-AP 1:2000) with HeLa cells lysate 1560 ug.



Immunofluorescent analysis of (-20°C Methanol) fixed A431 cells using SUMF2 antibody (11210-1-AP) at dilution of 1:200 and CoraLite®488-Conjugated AffiniPure Goat Anti-Rabbit IgG(H+L).