

For Research Use Only

BIN3 Polyclonal antibody

Catalog Number: 11215-1-AP **1 Publications**



Basic Information

Catalog Number: 11215-1-AP	GenBank Accession Number: BC009824	Purification Method: Antigen affinity purification
Size: 150ul , Concentration: 133 µg/ml by Nanodrop and 133 µg/ml by Bradford method using BSA as the standard;	GeneID (NCBI): 55909	Recommended Dilutions: WB 1:500-1:1000 IP 0.5-4.0 ug for IP and 1:200-1:1000 for WB
Source: Rabbit	Full Name: bridging integrator 3	IHC 1:20-1:200
Isotype: IgG	Calculated MW: 30 kDa	
Immunogen Catalog Number: AG1713	Observed MW: 30 kDa	

Applications

Tested Applications: IHC, IP, WB, ELISA	Positive Controls: WB : K-562 cells, HeLa cells
Cited Applications: WB	IP : K-562 cells,
Species Specificity: human, mouse, rat	IHC : human prostate cancer tissue,
Cited Species: mouse	

Note-IHC: suggested antigen retrieval with TE buffer pH 9.0; (*) Alternatively, antigen retrieval may be performed with citrate buffer pH 6.0

Background Information

Bridging integrator 3 (BIN3) is a conserved BAR (Bin/amphiphysin/ Rvs) domain adaptor protein (PMID: 11274158). BAR domain proteins, sharing an N-terminal BAR domain, have been implicated in diverse cellular processes, including endocytosis, vesicle fusion, cell polarity, actin organization, signal transduction, transcription repression, and tumor suppression (PMID: 16524918). BIN3 is involved in cytokinesis and septation where it has a role in the localization of F-actin (PMID: 11274158).

Notable Publications

Author	Pubmed ID	Journal	Application
Hoffmann Andrea A	22270329	Mol Med	WB

Storage

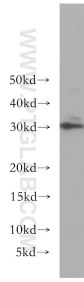
Storage:
Store at -20°C. Stable for one year after shipment.
Storage Buffer:
PBS with 0.02% sodium azide and 50% glycerol pH 7.3.
Aliquoting is unnecessary for -20°C storage

*** 20ul sizes contain 0.1% BSA

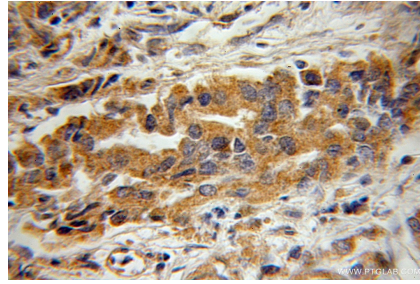
For technical support and original validation data for this product please contact:
T: 1 (888) 4PTGLAB (1-888-478-4522) (toll free in USA), or 1(312) 455-8498 (outside USA) E: proteintech@ptglab.com W: ptglab.com

This product is exclusively available under Proteintech Group brand and is not available to purchase from any other manufacturer.

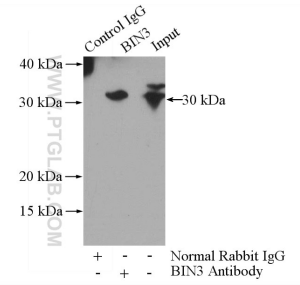
Selected Validation Data



K-562 cells were subjected to SDS PAGE followed by western blot with 11215-1-AP (BIN3 antibody) at dilution of 1:300 incubated at room temperature for 1.5 hours.



Immunohistochemical analysis of paraffin-embedded human prostate cancer using 11215-1-AP (BIN3 antibody) at dilution of 1:50 (under 10x lens).



IP Result of anti-BIN3 (IP:11215-1-AP, 4ug; Detection:11215-1-AP 1:300) with K-562 cells lysate 3200ug.