

For Research Use Only

MAP4 Polyclonal antibody

Catalog Number: 11229-1-AP

Featured Product

16 Publications



Basic Information

Catalog Number:

11229-1-AP

Size:

150ul, Concentration: 800 ug/ml by Nanodrop and 400 ug/ml by Bradford method using BSA as the standard;

Source:

Rabbit

Isotype:

IgG

Immunogen Catalog Number:

AG1741

GenBank Accession Number:

BC012794

GeneID (NCBI):

4134

UNIPROT ID:

P27816

Full Name:

microtubule-associated protein 4

Calculated MW:

121 kDa

Observed MW:

210-240 kDa

Purification Method:

Antigen affinity purification

Recommended Dilutions:

WB 1:500-1:3000

IP 0.5-4.0 ug for 1.0-3.0 mg of total protein lysate

IHC 1:50-1:500

Applications

Tested Applications:

WB, IP, IHC, ELISA

Cited Applications:

WB, IHC, IF, IP

Species Specificity:

human, mouse, rat

Cited Species:

human, mouse, rat

Note-IHC: suggested antigen retrieval with TE buffer pH 9.0; (*) Alternatively, antigen retrieval may be performed with citrate buffer pH 6.0

Positive Controls:

WB: HeLa cells, HEK-293 cells, C6 cells, C2C12 cells, HepG2 cells

IP: HEK-293 cells,

IHC: human oesophagus cancer tissue,

Background Information

MAP4 is a ubiquitously expressed microtubule-associated protein involved in the organization and stabilization of microtubules during various cellular activities. Recently it has been reported that expression of MAP4 was upregulated in esophageal squamous cell carcinoma (ESCC). MAP4 has been considered as an independent prognostic factor for ESCC. The predicted molecular weight of MAP4 is about 120 kDa, while higher molecular weight around 200-250 kDa is usually observed in WB test, which may be the result of glycosylation. (26876215, 8647865)

Notable Publications

Author	Pubmed ID	Journal	Application
Yuan Wu	31560394	J Mol Cell Biol	WB, IF
Janja Božič	34534264	Brain	WB
Ou Yanqiu Y	24140250	Urol Oncol	IHC

Storage

Storage:

Store at -20°C. Stable for one year after shipment.

Storage Buffer:

PBS with 0.02% sodium azide and 50% glycerol pH 7.3.

Aliquoting is unnecessary for -20°C storage

*** 20ul sizes contain 0.1% BSA

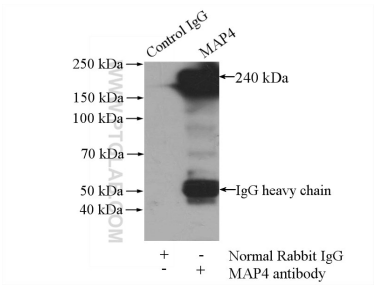
For technical support and original validation data for this product please contact:

T: 1 (888) 4PTGLAB (1-888-478-4522) (toll free in USA), or 1(312) 455-8498 (outside USA)

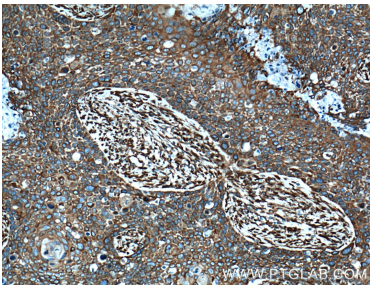
E: proteintech@ptglab.com
W: ptglab.com

This product is exclusively available under Proteintech Group brand and is not available to purchase from any other manufacturer.

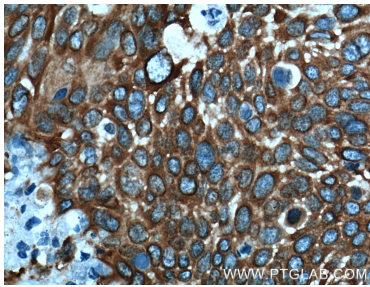
Selected Validation Data



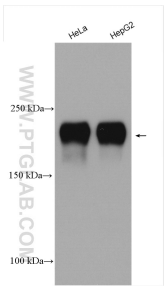
IP result of anti-MAP4 (IP:11229-1-AP, 4ug; Detection:11229-1-AP 1:1000) with HEK-293 cells lysate 1200ug.



Immunohistochemical analysis of paraffin-embedded human oesophagus cancer tissue slide using 11229-1-AP (MAP4 Antibody) at dilution of 1:200 (under 10x lens). Heat mediated antigen retrieval with Tris-EDTA buffer (pH 9.0).



Immunohistochemical analysis of paraffin-embedded human oesophagus cancer tissue slide using 11229-1-AP (MAP4 Antibody) at dilution of 1:200 (under 40x lens). Heat mediated antigen retrieval with Tris-EDTA buffer (pH 9.0).



Various lysates were subjected to SDS PAGE followed by western blot with 11229-1-AP (MAP4 antibody) at dilution of 1:1500 incubated at room temperature for 1.5 hours.