

For Research Use Only

# Casein Kinase 1 Epsilon Polyclonal antibody



Catalog Number: 11230-1-AP

1 Publications

## Basic Information

<b>Catalog Number:</b> 11230-1-AP	<b>GenBank Accession Number:</b> BC006490	<b>Purification Method:</b> Antigen affinity purification
<b>Size:</b> 150ul , Concentration: 400 µg/ml by Nanodrop and 400 µg/ml by Bradford method using BSA as the standard;	<b>GeneID (NCBI):</b> 1454	<b>Recommended Dilutions:</b> WB 1:200-1:1000 IHC 1:50-1:500
<b>Source:</b> Rabbit	<b>Full Name:</b> casein kinase 1, epsilon	
<b>Isotype:</b> IgG	<b>Calculated MW:</b> 47 kDa	
<b>Immunogen Catalog Number:</b> AG1742	<b>Observed MW:</b> 46-52 kDa	

## Applications

<b>Tested Applications:</b> IHC, WB, ELISA	<b>Positive Controls:</b> WB : A431 cells, mouse brain tissue
<b>Cited Applications:</b> WB	<b>IHC :</b> human breast cancer tissue, human heart tissue, human kidney tissue, human testis tissue, human ovary tissue
<b>Species Specificity:</b> human, mouse, rat	
<b>Cited Species:</b> human	

**Note-IHC: suggested antigen retrieval with TE buffer pH 9.0; (\*) Alternatively, antigen retrieval may be performed with citrate buffer pH 6.0**

## Background Information

CSNK1E(Casein kinase I isoform epsilon) is also named as CK1ε, CKI-epsilon and belongs to the casein kinase I subfamily. It plays a significant role in delaying the negative feedback signal within the transcription-translation-based autoregulatory loop that composes the core of the circadian mechanism and makes an ideal target for pharmaceutical compounds influencing circadian rhythms, sleep, and jet lag, as well as other physiologic and metabolic processes under circadian regulation(PMID:10775102). It can be autophosphorylated(PMID:19690332).

## Notable Publications

Author	Pubmed ID	Journal	Application
Chen Hao H	23297342	Mol Cell Biol	WB

## Storage

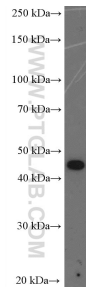
**Storage:**  
Store at -20°C. Stable for one year after shipment.  
**Storage Buffer:**  
PBS with 0.02% sodium azide and 50% glycerol pH 7.3.  
Aliquoting is unnecessary for -20°C storage

\*\*\* 20ul sizes contain 0.1% BSA

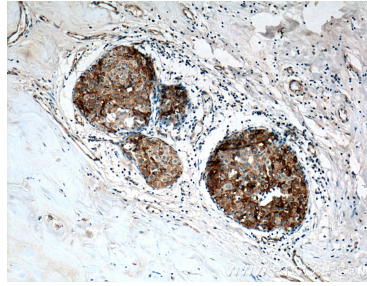
For technical support and original validation data for this product please contact:  
T: 1 (888) 4PTGLAB (1-888-478-4522) (toll free in USA), or 1(312) 455-8498 (outside USA)  
E: proteintech@ptglab.com  
W: ptglab.com

This product is exclusively available under Proteintech Group brand and is not available to purchase from any other manufacturer.

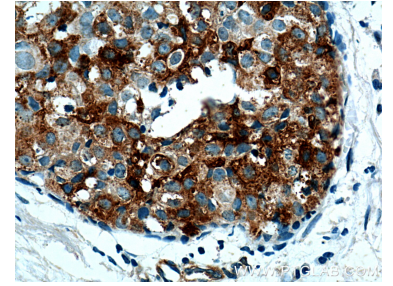
## Selected Validation Data



A431 cells were subjected to SDS PAGE followed by western blot with 11230-1-AP (Casein Kinase 1 epsilon antibody at dilution of 1:300 incubated at room temperature for 1.5 hours.



Immunohistochemical analysis of paraffin-embedded human breast cancer tissue slide using 11230-1-AP (Casein Kinase 1 epsilon antibody at dilution of 1:200 (under 10x lens). Heat mediated antigen retrieval with Tris-EDTA buffer (pH 9.0).



Immunohistochemical analysis of paraffin-embedded human breast cancer tissue slide using 11230-1-AP (Casein Kinase 1 epsilon antibody at dilution of 1:200 (under 40x lens). Heat mediated antigen retrieval with Tris-EDTA buffer (pH 9.0).