

For Research Use Only

EIF2A/CDA02 Polyclonal antibody

Catalog Number: 11233-1-AP

Featured Product

68 Publications



Basic Information

Catalog Number:

11233-1-AP

Size:

150ul, Concentration: 650 ug/ml by Nanodrop;

Source:

Rabbit

Isotype:

IgG

Immunogen Catalog Number:

AG1753

GenBank Accession Number:

BC011885

GeneID (NCBI):

83939

UNIPROT ID:

Q9BY44

Full Name:

eukaryotic translation initiation factor 2A, 65kDa

Calculated MW:

65 kDa

Observed MW:

65 kDa

Purification Method:

Antigen affinity purification

Recommended Dilutions:

WB: 1:1000-1:8000

IP: 0.5-4.0 ug for 1.0-3.0 mg of total protein lysate

IHC: 1:20-1:200

IF/ICC: 1:200-1:800

FC (Intra): 0.40 ug per 10⁶ cells in a 100 µl suspension

Applications

Tested Applications:

WB, IHC, IF/ICC, FC (Intra), IP, ELISA

Cited Applications:

WB, IHC, IF, IP

Species Specificity:

human, mouse, rat

Cited Species:

human, mouse, rat, pig

Note-IHC: suggested antigen retrieval with TE buffer pH 9.0; (*) Alternatively, antigen retrieval may be performed with citrate buffer pH 6.0

Positive Controls:

WB: MCF-7 cells, HEK-293T cells, HeLa cells, PC-12 cells

IP: MCF-7 cells,

IHC: human prostate cancer tissue, human pancreas tissue

IF/ICC: HepG2 cells, Ethacrynic acid treated HepG2 cells

FC (Intra): HepG2 cells,

Background Information

EIF2A, also named as CDA02, MSTP004 and MSTP089, belongs to the WD repeat EIF2A family. It functions in the early steps of protein synthesis of a small number of specific mRNAs. EIF2A, an alternative initiator tRNA-binding protein, has a key role in the translation of HCV mRNA during HCV infection, in turn promoting eIF2a phosphorylation by activating the eIF2a kinase PKR. This antibody is a rabbit polyclonal antibody raised against residues near the C terminus of human EIF2A, recognizes specifically the 65kd EIF2A protein. EIF2A (Gene ID: 83939) and EIF2S1 (Gene ID: 1965) share the EIF2A symbol/alias in common. EIF2S1 is the alpha subunit of the eIF2 translation initiation complex. Although both of these proteins function in binding initiator tRNA to the 40S ribosomal subunit, the EIF2A protein does so in a codon-dependent manner, whereas eIF2 complex requires GTP.

Notable Publications

Author	Pubmed ID	Journal	Application
Yun Chen	32996245	J Cell Mol Med	WB
Tao Wang	36151083	Nat Commun	IF
Yonghua Chen	30181379	Biosci Rep	WB

Storage

Storage:

Store at -20°C. Stable for one year after shipment.

Storage Buffer:

PBS with 0.02% sodium azide and 50% glycerol, pH7.3

Aliquoting is unnecessary for -20°C storage

*** 20ul sizes contain 0.1% BSA

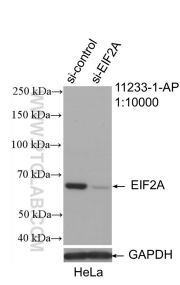
For technical support and original validation data for this product please contact:

T: 1 (888) 4PTGLAB (1-888-478-4522) (toll free in USA), or 1(312) 455-8498 (outside USA)

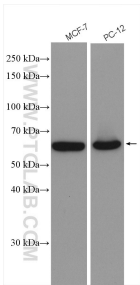
E: proteintech@ptglab.com
W: ptglab.com

This product is exclusively available under Proteintech Group brand and is not available to purchase from any other manufacturer.

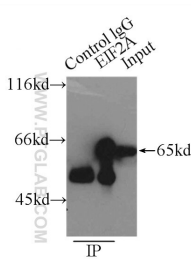
Selected Validation Data



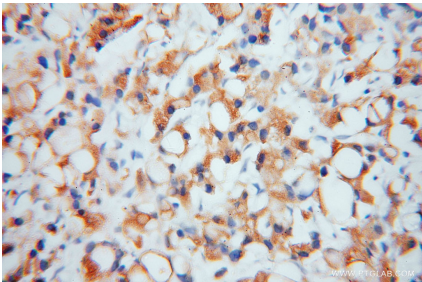
WB result of EIF2A/CDA02 antibody (11233-1-AP; 1:10000; incubated at room temperature for 1.5 hours) with sh-Control and sh-EIF2A/CDA02 transfected HeLa cells.



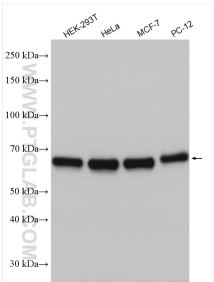
Various lysates were subjected to SDS PAGE followed by western blot with 11233-1-AP (EIF2A/CDA02 antibody) at dilution of 1:4000 incubated at room temperature for 1.5 hours.



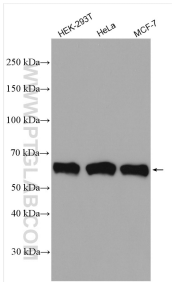
IP result of anti-EIF2A/CDA02 (IP:11233-1-AP, 3ug; Detection:11233-1-AP 1:1000) with MCF-7 cells lysate 3250ug.



Immunohistochemical analysis of paraffin-embedded human prostate cancer using 11233-1-AP (EIF2A/CDA02 antibody) at dilution of 1:50 (under 40x lens).



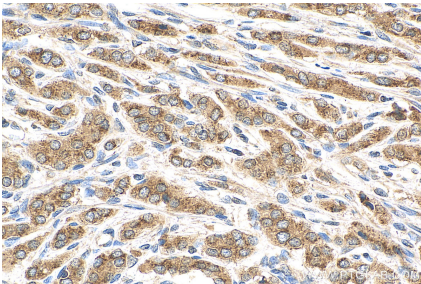
Various lysates were subjected to SDS PAGE followed by western blot with 11233-1-AP (EIF2A/CDA02 antibody) at dilution of 1:10000 incubated at room temperature for 1.5 hours.



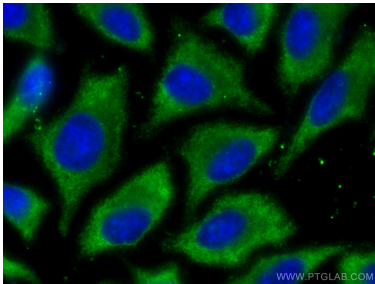
Various lysates were subjected to SDS PAGE followed by western blot with 11233-1-AP (EIF2A/CDA02 antibody) at dilution of 1:8000 incubated at room temperature for 1.5 hours.



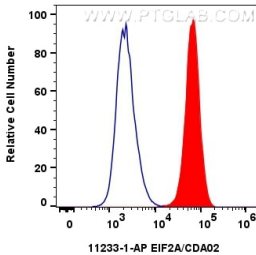
IP result of anti-EIF2A/CDA02 (IP:11233-1-AP, 4ug; Detection:11233-1-AP 1:6000) with MCF-7 cells lysate 760 ug.



Immunohistochemical analysis of paraffin-embedded human prostate cancer tissue slide using 11233-1-AP (EIF2A/CDA02 antibody) at dilution of 1:200 (under 40x lens). Heat mediated antigen retrieval with Tris-EDTA buffer (pH 9.0).



Immunofluorescent analysis of (-20°C Ethanol) fixed HepG2 cells using EIF2A/CDA02 antibody (11233-1-AP) at dilution of 1:400 and CoraLite®488-Conjugated Goat Anti-Rabbit IgG(H+L).



1x10⁶ HepG2 cells were intracellularly stained with 0.4 ug EIF2A/CDA02 Polyclonal antibody (11233-1-AP) and CoraLite®488-Conjugated Goat Anti-Rabbit IgG(H+L) (SA00013-2)(red), or 0.4 ug Rabbit IgG control Rabbit PolyAb (30000-0-AP) (blue). Cells were fixed with 4% PFA and permeabilized with Flow Cytometry Perm Buffer (PF00011-C).