

For Research Use Only

CREB3L1,OASIS Polyclonal antibody

Catalog Number:11235-2-AP

Featured Product

12 Publications



Basic Information

Catalog Number:

11235-2-AP

Size:

150ul , Concentration: 850 ug/ml by Nanodrop and 400 ug/ml by Bradford method using BSA as the standard;

Source:

Rabbit

Isotype:

IgG

Immunogen Catalog Number:

AG1757

GenBank Accession Number:

BC015781

GeneID (NCBI):

90993

UNIPROT ID:

Q96BA8

Full Name:

cAMP responsive element binding protein 3-like 1

Calculated MW:

57 kDa

Observed MW:

55-58 kDa and 84 kDa

Purification Method:

Antigen affinity purification

Recommended Dilutions:

WB 1:500-1:1000

IHC 1:20-1:200

IF/ICC 1:50-1:500

Applications

Tested Applications:

WB, IHC, IF/ICC, ELISA

Cited Applications:

WB, IHC, IF

Species Specificity:

human, mouse, rat

Cited Species:

human, mouse, rat

Note-IHC: suggested antigen retrieval with TE buffer pH 9.0; (*) Alternatively, antigen retrieval may be performed with citrate buffer pH 6.0

Positive Controls:

WB : A549 cells, COLO 320 cells

IHC : human prostate cancer tissue,

IF/ICC : A549 cells,

Background Information

Cyclic AMP-responsive element-binding protein 3-like protein 1(CREB3L1) belongs to a family of transcription factors that are synthesized as membrane-bound precursors in the endoplasmic reticulum (ER) and then transported to the Golgi where they are activated through regulated intramembrane proteolysis (RIP). Also it participates in ER-stress response in astrocytes in the central nervous system. It may has a role in gliosis, and involves in activation of transcription through box-B element but not CRE. CREB3L1 acts as a transcription repressor in proliferation of virus-infected cell. The full-length precursor form (approximately 84 kDa) of CREB3L1 and the matured form of CREB3L1 is 58 kDa. (PMID: 20668028)

Notable Publications

Author	Pubmed ID	Journal	Application
Mei-Xuan Wan	36299877	Front Pharmacol	WB
Xiaomei Liu	30524373	Front Endocrinol (Lausanne)	WB
Wei Xiao	31293656	J Cancer	IHC

Storage

Storage:

Store at -20°C. Stable for one year after shipment.

Storage Buffer:

PBS with 0.02% sodium azide and 50% glycerol pH 7.3.

Aliquoting is unnecessary for -20°C storage

*** 20ul sizes contain 0.1% BSA

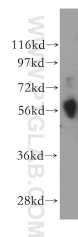
For technical support and original validation data for this product please contact:

T: 1 (888) 4PTGLAB (1-888-478-4522) (toll free in USA), or 1(312) 455-8498 (outside USA)

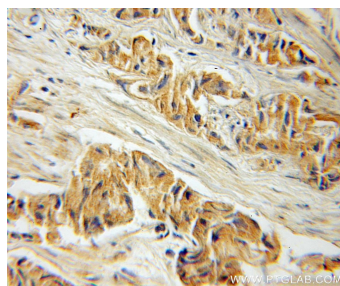
E: proteintech@ptglab.com
W: ptglab.com

This product is exclusively available under Proteintech Group brand and is not available to purchase from any other manufacturer.

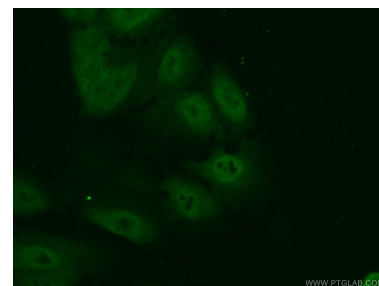
Selected Validation Data



A549 cells were subjected to SDS PAGE followed by western blot with 11235-2-AP (CREB3L1,OASIS antibody) at dilution of 1:300 incubated at room temperature for 1.5 hours. This batch of A549 cells lysate predominantly expressed the maturer form likely due to cell stage.



Immunohistochemical analysis of paraffin-embedded human prostate cancer using 11235-2-AP (CREB3L1,OASIS antibody) at dilution of 1:50 (under 25x Lens).



Immunofluorescent analysis of (10% Formaldehyde) fixed A549 cells using 11235-2-AP (CREB3L1,OASIS antibody) at dilution of 1:50 and Alexa Fluor 488-conjugated Goat Anti-Rabbit IgG(H+L).