

For Research Use Only

FLCN Polyclonal antibody

Catalog Number: 11236-2-AP

Featured Product

8 Publications



Basic Information

Catalog Number:

11236-2-AP

Size:

150ul, Concentration: 700 ug/ml by Nanodrop and 433 ug/ml by Bradford method using BSA as the standard;

Source:

Rabbit

Isotype:

IgG

Immunogen Catalog Number:

AG1746

GenBank Accession Number:

BC015687

GeneID (NCBI):

201163

UNIPROT ID:

Q8NFG4

Full Name:

folliculin

Calculated MW:

65 kDa

Observed MW:

64-75 kDa

Purification Method:

Antigen affinity purification

Recommended Dilutions:

WB 1:500-1:1000

IHC 1:50-1:500

Applications

Tested Applications:

WB, IHC, ELISA

Cited Applications:

WB, IHC, IF, IP

Species Specificity:

human, mouse, rat

Cited Species:

human, mouse, rat

Note-IHC: suggested antigen retrieval with TE buffer pH 9.0; (*) Alternatively, antigen retrieval may be performed with citrate buffer pH 6.0

Positive Controls:

WB : A431 cells, HeLa cells, HEK-293 cells, NCCIT cells

IHC : human intrahepatic cholangiocarcinoma tissue,

Background Information

FLCN, also named as BHD, belongs to the folliculin family. It may play a role in the pathogenesis of an uncommon form of kidney cancer through its association with an inherited disorder of the hair follicle (fibrofolliculomas). FLCN may be a tumor suppressor. It is involved in colorectal tumorigenesis. It may be involved in energy and/or nutrient sensing through the AMPK and mTOR signaling pathways. Mutation of FLCN may cause the BHD(Birt-Hogg-Dube syndrome) or (PSP) primary spontaneous pneumothorax. And it may be involved in renal cell carcinoma.

Notable Publications

Author	Pubmed ID	Journal	Application
Xuyang Zhao	32850947	Front Mol Biosci	IHC
Kun Wu	33607355	J Trace Elem Med Biol	WB
Caterina Collodet	31404503	FASEB J	WB,IP

Storage

Storage:

Store at -20°C. Stable for one year after shipment.

Storage Buffer:

PBS with 0.02% sodium azide and 50% glycerol, pH7.3

Aliquoting is unnecessary for -20°C storage

*** 20ul sizes contain 0.1% BSA

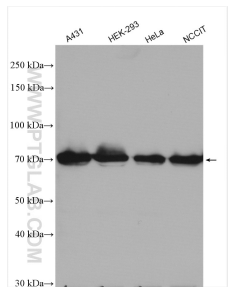
For technical support and original validation data for this product please contact:

T: 1 (888) 4PTGLAB (1-888-478-4522) (toll free in USA), or 1(312) 455-8498 (outside USA)

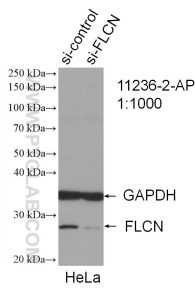
E: proteintech@ptglab.com
W: ptglab.com

This product is exclusively available under Proteintech Group brand and is not available to purchase from any other manufacturer.

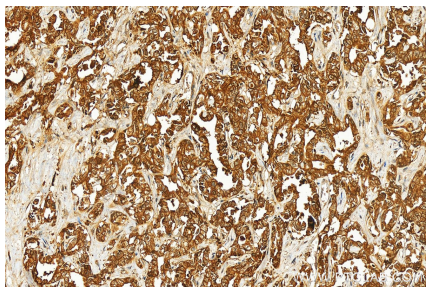
Selected Validation Data



Various lysates were subjected to SDS PAGE followed by western blot with 11236-2-AP (FLCN antibody) at dilution of 1:800 incubated at room temperature for 1.5 hours.



WB result of FLCN antibody (11236-2-AP; 1:1000; incubated at room temperature for 1.5 hours) with sh-Control and sh-FLCN transfected HeLa cells.



Immunohistochemical analysis of paraffin-embedded human intrahepatic cholangiocarcinoma tissue slide using 11236-2-AP (FLCN antibody) at dilution of 1:200 (under 20x lens). Heat mediated antigen retrieval with Tris-EDTA buffer (pH 9.0).