

For Research Use Only

SH3BGRL Polyclonal antibody

Catalog Number: 11253-1-AP



Basic Information

| | | |
|--|---|--|
| Catalog Number: 11253-1-AP | GenBank Accession Number: BC016709 | Purification Method: Antigen affinity purification |
| Size: 150ul , Concentration: 450 µg/ml by Nanodrop and 340 µg/ml by Bradford method using BSA as the standard; | GeneID (NCBI): 6451 | Recommended Dilutions: WB 1:500-1:1000 |
| Source: Rabbit | Full Name: SH3 domain binding glutamic acid-rich protein like | |
| Isotype: IgG | Calculated MW: 13 kDa | |
| Immunogen Catalog Number: AG1780 | Observed MW: 13 kDa | |

Applications

| | |
|---|---|
| Tested Applications: WB, ELISA | Positive Controls: WB : mouse colon tissue, mouse uterus tissue |
| Species Specificity: human, mouse | |

Background Information

SH3BGRL, an adaptor protein, is one member of the SH3BGR family. SH3BGRL is ubiquitously expressed in varied human tissues and organs, including the bone marrow, heart, lung, liver, and kidney. SH3BGRL encodes a small protein with a conserved proline-rich PLPPQIF region and two motifs, Homer EVH1-binding and SH3-binding motifs. As a scaffold protein, SH3BGRL could participate in the protein-protein interaction for the integration or/and crosstalk of signal transduction, membrane trafficking, cytoskeletal rearrangements, and other key cellular processes.

Storage

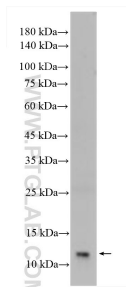
Storage:
Store at -20°C. Stable for one year after shipment.
Storage Buffer:
PBS with 0.02% sodium azide and 50% glycerol pH 7.3.
Aliquoting is unnecessary for -20°C storage

*** 20ul sizes contain 0.1% BSA

For technical support and original validation data for this product please contact:
T: 1 (888) 4PTGLAB (1-888-478-4522) (toll free in USA), or 1(312) 455-8498 (outside USA) E: proteintech@ptglab.com W: ptglab.com

This product is exclusively available under Proteintech Group brand and is not available to purchase from any other manufacturer.

Selected Validation Data



mouse colon tissue were subjected to SDS PAGE followed by western blot with 11253-1-AP (SH3BGRL antibody) at dilution of 1:500 incubated at room temperature for 1.5 hours.