

For Research Use Only

Annexin A2 Polyclonal antibody

Catalog Number: 11256-1-AP

Featured Product

72 Publications



Basic Information

Catalog Number:

11256-1-AP

Size:

150ul, Concentration: 600 ug/ml by Nanodrop;

Source:

Rabbit

Isotype:

IgG

Immunogen Catalog Number:

AG1777

GenBank Accession Number:

BC016774

GeneID (NCBI):

302

ENSEMBL Gene ID:

ENSG00000182718

UNIPROT ID:

P07355

Full Name:

annexin A2

Calculated MW:

339 aa, 39 kDa

Observed MW:

35-40 kDa

Purification Method:

Antigen affinity purification

Recommended Dilutions:

WB 1:5000-1:50000

IP 0.5-4.0 ug for 1.0-3.0 mg of total protein lysate

IHC 1:500-1:2000

IF/ICC 1:50-1:500

Applications

Tested Applications:

WB, IHC, IF/ICC, FC (Intra), IP, ELISA

Cited Applications:

WB, IHC, IF, IP, CoIP, RIP, ELISA

Species Specificity:

human, mouse, rat

Cited Species:

human, mouse, rat, pig, monkey, chicken, zebrafish, bovine

Note-IHC: suggested antigen retrieval with TE buffer pH 9.0; (*) Alternatively, antigen retrieval may be performed with citrate buffer pH 6.0

Positive Controls:

WB: HEK-293 cells, HeLa cells, mouse placenta tissue, THP-1 cells, NIH/3T3 cells, mouse kidney tissue, rat kidney tissue, HepG2 cells

IP: HeLa cells,

IHC: mouse placenta tissue, human bowen disease tissue, human breast cancer tissue, human hepatocirrhosis tissue, human liver tissue, human lung cancer tissue, human oesophagus cancer tissue, human prostate cancer tissue, mouse kidney tissue, mouse liver tissue

IF/ICC: HeLa cells, MCF-7 cells

Background Information

Annexin A2 (ANXA2), also named Annexin-2 or Lipocortin II, is a Ca^{2+} binding protein that is up-regulated in virally transformed cell lines and human tumors. This calcium-regulated membrane-binding protein, whose affinity for calcium is greatly enhanced by anionic phospholipids, may cross-link plasma membrane phospholipids with actin and the cytoskeleton and be involved with exocytosis. Heat-stress response may also involve Annexin-2.

Notable Publications

Author	Pubmed ID	Journal	Application
Ming Xiong	31695759	Theranostics	IHC
Binghui Liu	33320565	ACS Biomater Sci Eng	IHC
Di Huang	30224822	Nat Immunol	

Storage

Storage:

Store at -20°C . Stable for one year after shipment.

Storage Buffer:

PBS with 0.02% sodium azide and 50% glycerol, pH7.3

Aliquoting is unnecessary for -20°C storage

*** 20ul sizes contain 0.1% BSA

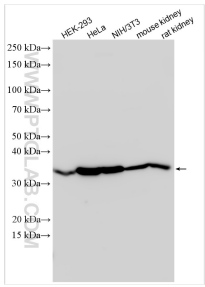
For technical support and original validation data for this product please contact:

T: 1 (888) 4PTGLAB (1-888-478-4522) (toll free in USA), or 1(312) 455-8498 (outside USA)

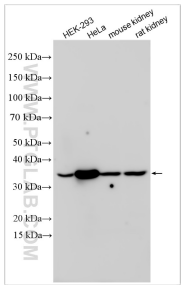
E: proteintech@ptglab.com
W: ptglab.com

This product is exclusively available under Proteintech Group brand and is not available to purchase from any other manufacturer.

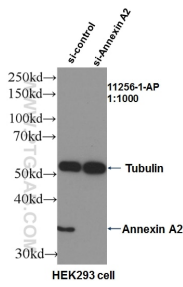
Selected Validation Data



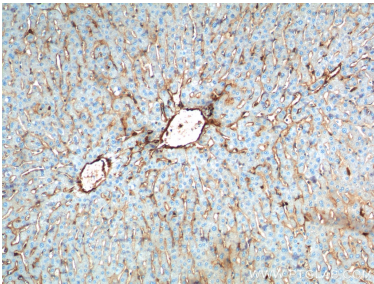
Various lysates were subjected to SDS PAGE followed by western blot with 11256-1-AP (Annexin A2 antibody) at dilution of 1:20000 incubated at room temperature for 1.5 hours.



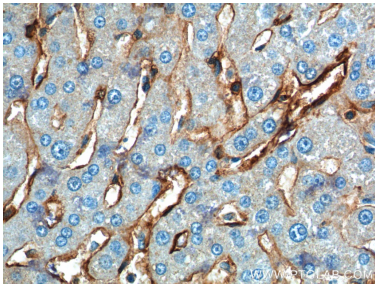
Various lysates were subjected to SDS PAGE followed by western blot with 11256-1-AP (Annexin A2 antibody) at dilution of 1:100000 incubated at room temperature for 1.5 hours.



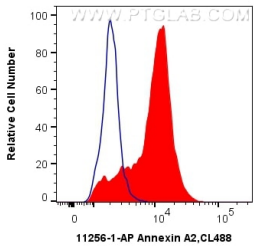
WB result of Annexin A2 (11256-1-AP, 1:1000) with si-Control and si-Annexin A2 transfected HEK293 cells.



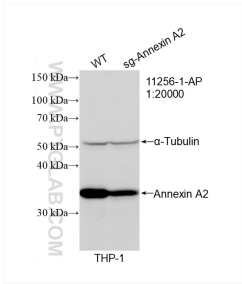
Immunohistochemical analysis of paraffin-embedded human liver tissue slide using 11256-1-AP (Annexin A2 Antibody) at dilution of 1:200 (under 10x lens).



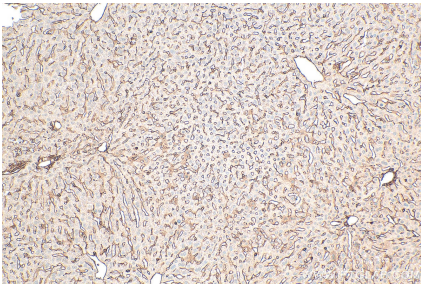
Immunohistochemical analysis of paraffin-embedded human liver tissue slide using 11256-1-AP (Annexin A2 Antibody) at dilution of 1:200 (under 40x lens).



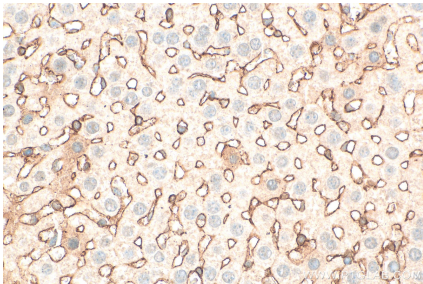
1X10⁶ K-562 cells were intracellularly stained with 0.4 ug Anti-Human Annexin A2 (11256-1-AP) and CoraLite®488-Conjugated AffiniPure Goat Anti-Rabbit IgG(H+L) at dilution 1:1000 (red), or 0.4 ug Control Antibody. Cells were fixed with 4% PFA and permeabilized with Flow Cytometry Perm Buffer (PF00011-C).



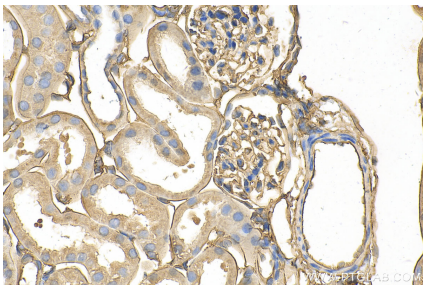
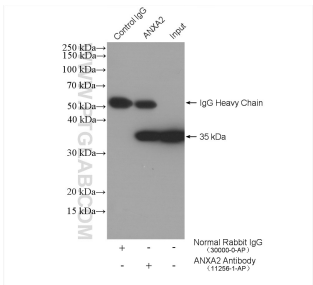
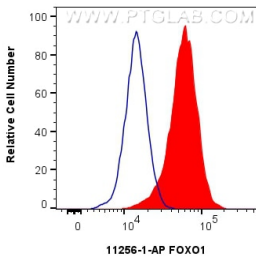
WB result of Annexin A2 antibody (11256-1-AP; 1:20000; room temperature for 1.5 hours) with wild-type and sg-Annexin A2 transfected THP-1 cells.



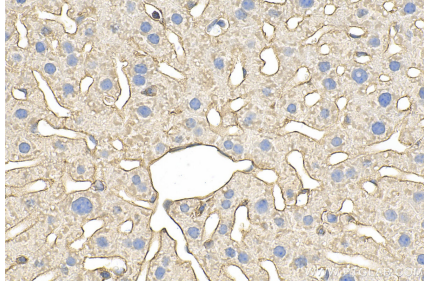
Immunohistochemical analysis of paraffin-embedded mouse liver tissue slide using 11256-1-AP (Annexin A2 antibody) at dilution of 1:1000 (under 10x lens). Heat mediated antigen retrieval with Tris-EDTA buffer (pH 9.0).



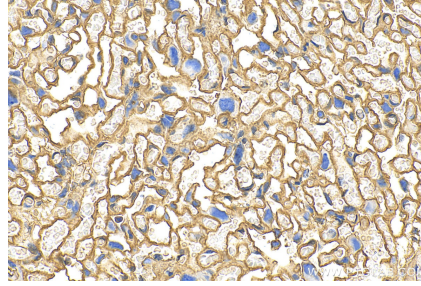
Immunohistochemical analysis of paraffin-embedded mouse liver tissue slide using 11256-1-AP (Annexin A2 antibody) at dilution of 1:1000 (under 40x lens). Heat mediated antigen retrieval with Tris-EDTA buffer (pH 9.0).



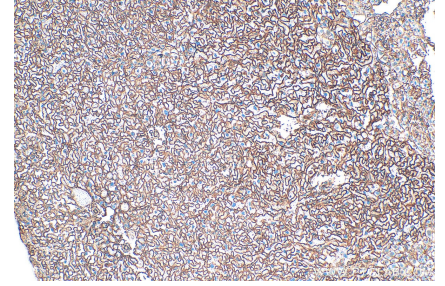
1x10⁶ A549 cells were intracellularly stained with 0.25 ug Annexin A2 Polyclonal antibody (11256-1-AP) and CoraLite®488-Conjugated Goat Anti-Rabbit IgG(H+L) (SA00013-2)(red), or 0.25 ug Rabbit IgG control Rabbit PolyAb (30000-0-AP) (blue). Cells were fixed with 4% PFA and permeabilized with Flow Cytometry Perm Buffer (PFA001-1).



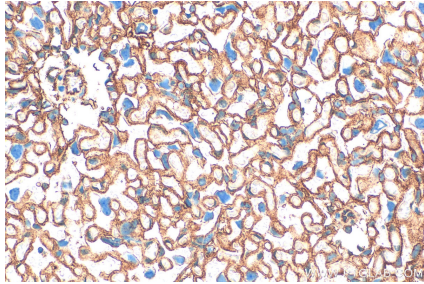
IP result of anti-Annexin A2 (IP:11256-1-AP, 4ug; Detection:11256-1-AP 1:3000) with HeLa cells lysate 2640 ug.



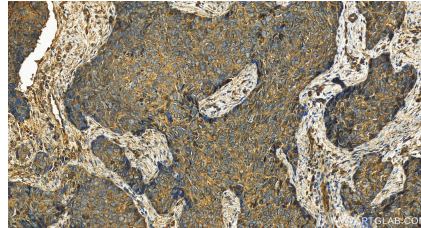
Immunohistochemical analysis of paraffin-embedded mouse kidney tissue slide using 11256-1-AP (Annexin A2 antibody) at dilution of 1:200 (under 40x lens). Heat mediated antigen retrieval with Tris-EDTA buffer (pH 9.0).



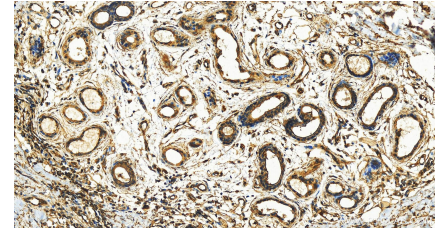
Immunohistochemical analysis of paraffin-embedded mouse liver tissue slide using 11256-1-AP (Annexin A2 antibody) at dilution of 1:200 (under 40x lens). Heat mediated antigen retrieval with Tris-EDTA buffer (pH 9.0).



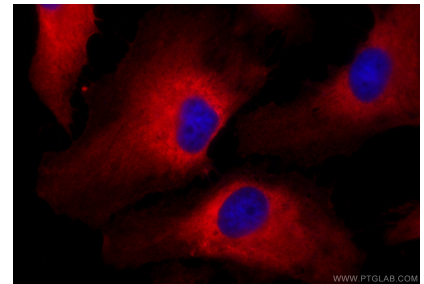
Immunohistochemical analysis of paraffin-embedded mouse placenta tissue slide using 11256-1-AP (Annexin A2 antibody) at dilution of 1:200 (under 40x lens). Heat mediated antigen retrieval with Tris-EDTA buffer (pH 9.0).



Immunohistochemical analysis of paraffin-embedded mouse placenta tissue slide using 11256-1-AP (Annexin A2 antibody) at dilution of 1:1000 (under 10x lens). Heat mediated antigen retrieval with Tris-EDTA buffer (pH 9.0).

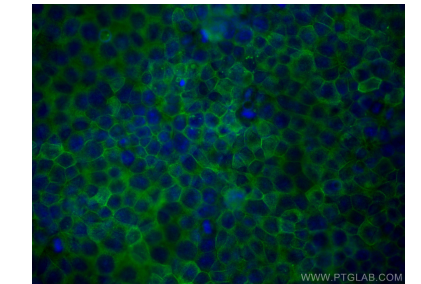


Immunohistochemical analysis of paraffin-embedded mouse placenta tissue slide using 11256-1-AP (Annexin A2 antibody) at dilution of 1:1000 (under 40x lens). Heat mediated antigen retrieval with Tris-EDTA buffer (pH 9.0).



Immunofluorescent analysis of (-20°C Ethanol) fixed HeLa cells using Annexin A2 antibody (11256-1-AP) at dilution of 1:200 and CoraLite®594-Conjugated Goat Anti-Rabbit IgG(H+L) (SA00013-4).

Immunohistochemical analysis of paraffin-embedded human bowen disease slide using 11256-1-AP (Annexin A2 antibody) at dilution of 1:600 (under 20x lens). Heat mediated antigen retrieval with Tris-EDTA buffer (pH 9.0).



Immunofluorescent analysis of (-20°C Methanol) fixed MCF-7 cells using Annexin A2 antibody (11256-1-AP) at dilution of 1:200 and Multi-rAb CoraLite® Plus 488-Goat Anti-Rabbit Recombinant Secondary Antibody (H+L) (RGAR002).

Immunohistochemical analysis of paraffin-embedded human bowen disease slide using 11256-1-AP (Annexin A2 antibody) at dilution of 1:600 (under 20x lens). Heat mediated antigen retrieval with Tris-EDTA buffer (pH 9.0).

