

For Research Use Only

# ERO1LB Polyclonal antibody

Catalog Number: 11261-2-AP

Featured Product

6 Publications



## Basic Information

<b>Catalog Number:</b> 11261-2-AP	<b>GenBank Accession Number:</b> BC032823	<b>Purification Method:</b> Antigen affinity purification
<b>Size:</b> 150ul, Concentration: 240 µg/ml by Nanodrop and 147 µg/ml by Bradford method using BSA as the standard;	<b>GeneID (NCBI):</b> 56605	<b>Recommended Dilutions:</b> WB 1:500-1:2000 IHC 1:20-1:200 IF 1:50-1:500
<b>Source:</b> Rabbit	<b>Full Name:</b> ERO1-like beta ( <i>S. cerevisiae</i> )	
<b>Isotype:</b> IgG	<b>Calculated MW:</b> 54 kDa	
<b>Immunogen Catalog Number:</b> AG1776	<b>Observed MW:</b> 40~50 kDa	

## Applications

### Tested Applications:

IF, IHC, WB, ELISA

### Cited Applications:

WB

### Species Specificity:

human

### Cited Species:

human, mouse

**Note-IHC: suggested antigen retrieval with TE buffer pH 9.0; (\*) Alternatively, antigen retrieval may be performed with citrate buffer pH 6.0**

### Positive Controls:

WB : HeLa cells, human placenta tissue

IHC : human pancreas cancer tissue, human oesophagus tissue, human small intestine tissue

IF : HeLa cells,

## Background Information

Endoplasmic reticulum oxidoreductases (Eros) are essential for the formation of disulfide bonds. Mammals express two related Ero proteins, Ero1L alpha and Ero1L beta. The two homologous proteins can form homodimers and mixed heterodimers. Ero1-L $\alpha$  and - $\beta$  are highly expressed in organs with a high demand for secretion, consistent with their roles in oxidative folding of ER proteins.

## Notable Publications

Author	Pubmed ID	Journal	Application
Okamoto Yuji Y	23847051	Hum Mol Genet	WB
Galligan James J JJ	22829816	J Toxicol	WB
Norio Takei	28839225	Sci Rep	WB

## Storage

### Storage:

Store at -20°C. Stable for one year after shipment.

### Storage Buffer:

PBS with 0.02% sodium azide and 50% glycerol pH 7.3.

Aliquoting is unnecessary for -20°C storage

\*\*\* 20ul sizes contain 0.1% BSA

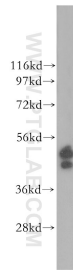
For technical support and original validation data for this product please contact:

T: 1 (888) 4PTGLAB (1-888-478-4522) (toll free in USA), or 1(312) 455-8498 (outside USA)

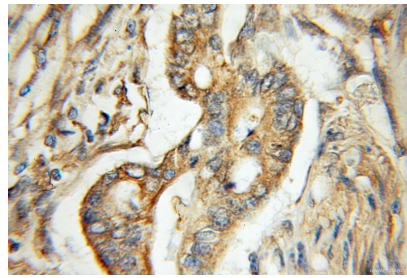
E: proteintech@ptglab.com  
W: ptglab.com

This product is exclusively available under Proteintech Group brand and is not available to purchase from any other manufacturer.

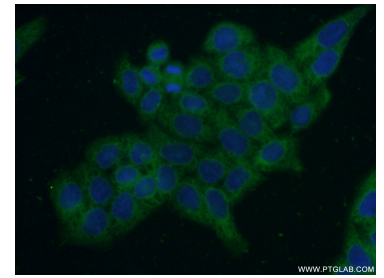
## Selected Validation Data



HeLa cells were subjected to SDS PAGE followed by western blot with 11261-2-AP (ERO 1LB antibody) at dilution of 1:500 incubated at room temperature for 1.5 hours.



Immunohistochemical analysis of paraffin-embedded human pancreas cancer using 11261-2-AP (ERO 1LB antibody) at dilution of 1:50 (under 40x lens).



Immunofluorescent analysis of (-20°C Ethanol) fixed HeLa cells using 11261-2-AP (ERO 1LB antibody) at dilution of 1:50 and Alexa Fluor 488-conjugated AffiniPure Goat Anti-Rabbit IgG(H+L).