

For Research Use Only

# ATG3 Polyclonal antibody

Catalog Number: 11262-2-AP

17 Publications



## Basic Information

<b>Catalog Number:</b> 11262-2-AP	<b>GenBank Accession Number:</b> BC024221	<b>Purification Method:</b> Antigen affinity purification
<b>Size:</b> 150ul , Concentration: 350 µg/ml by Nanodrop and 133 µg/ml by Bradford method using BSA as the standard;	<b>GeneID (NCBI):</b> 64422	<b>Recommended Dilutions:</b> WB 1:2000-1:12000 IHC 1:500-1:2000 IF 1:200-1:800
<b>Source:</b> Rabbit	<b>Full Name:</b> ATG3 autophagy related 3 homolog (S. cerevisiae)	
<b>Isotype:</b> IgG	<b>Calculated MW:</b> 36 kDa	
<b>Immunogen Catalog Number:</b> AG1785	<b>Observed MW:</b> 36-40 kDa	

## Applications

<b>Tested Applications:</b> IF, IHC, WB, ELISA	<b>Positive Controls:</b>
<b>Cited Applications:</b> IF, IHC, WB	<b>WB :</b> HL-60 cells, HeLa cells, Jurkat cells, K-562 cells, THP-1 cells, PC-12 cells
<b>Species Specificity:</b> human, mouse, rat	<b>IHC :</b> mouse kidney tissue,
<b>Cited Species:</b> human, rat, mouse, pig	<b>IF :</b> HEK-293 cells,
<b>Note-IHC: suggested antigen retrieval with TE buffer pH 9.0; (*) Alternatively, antigen retrieval may be performed with citrate buffer pH 6.0</b>	

## Background Information

Autophagy is a lysosome-dependent conserved catabolic process in response to various stresses, such as oxidative stress and ischemia, for the degradation and recycling of aged or dysfunctional intracellular components and damaged organelles. A large group of autophagy-related genes (ATGs) have been identified as essential drivers in different stages of autophagy. Autophagy-related 3 (ATG3), one of the autophagy-related gene family members, serves as an E2-like enzyme contributing to the conjugation of microtubule-associated protein light chain 3 (LC3) to lipid phosphatidylethanolamine (PE). ATG3 plays a significant role in the regulation of autophagy, viability, and death.

## Notable Publications

Author	Pubmed ID	Journal	Application
Na Yang	34546510	Stem Cell Rev Rep	WB
Hou Chaoqun	36183442	Tissue Cell	IF
Yeyi Xiao	36270035	Ecotoxicol Environ Saf	WB

## Storage

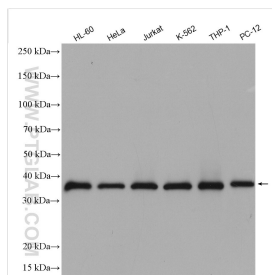
**Storage:**  
Store at -20°C. Stable for one year after shipment.  
**Storage Buffer:**  
PBS with 0.02% sodium azide and 50% glycerol pH 7.3.  
Aliquoting is unnecessary for -20°C storage

\*\*\* 20ul sizes contain 0.1% BSA

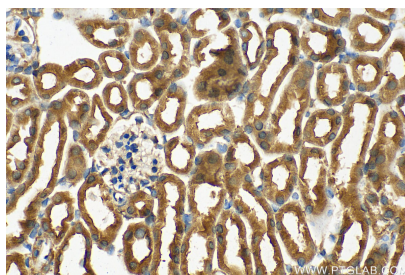
For technical support and original validation data for this product please contact:  
T: 1 (888) 4PTGLAB (1-888-478-4522) (toll free in USA), or 1(312) 455-8498 (outside USA)  
E: proteintech@ptglab.com  
W: ptglab.com

This product is exclusively available under Proteintech Group brand and is not available to purchase from any other manufacturer.

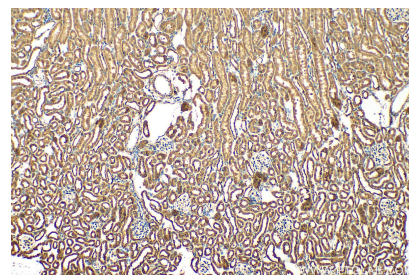
## Selected Validation Data



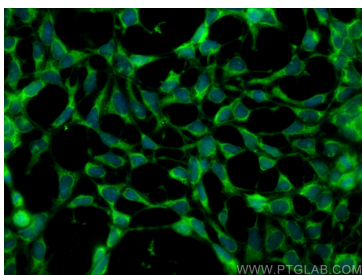
Various lysates were subjected to SDS PAGE followed by western blot with 11262-2-AP (ATG3 antibody) at dilution of 1:6000 incubated at room temperature for 1.5 hours.



Immunohistochemical analysis of paraffin-embedded mouse kidney tissue slide using 11262-2-AP (ATG3 antibody) at dilution of 1:1000 (under 40x lens). Heat mediated antigen retrieval with Tris-EDTA buffer (pH 9.0).



Immunohistochemical analysis of paraffin-embedded mouse kidney tissue slide using 11262-2-AP (ATG3 antibody) at dilution of 1:1000 (under 10x lens). Heat mediated antigen retrieval with Tris-EDTA buffer (pH 9.0).



Immunofluorescent analysis of (-20°C Ethanol) fixed HEK-293 cells using ATG3 antibody (11262-2-AP) at dilution of 1:400 and CoraLite®488-Conjugated AffiniPure Goat Anti-Rabbit IgG(H+L).