

For Research Use Only

RPL13 Polyclonal antibody

Catalog Number: 11271-1-AP

4 Publications



Basic Information

Catalog Number:

11271-1-AP

Size:

150ul, Concentration: 400 ug/ml by Nanodrop and 267 ug/ml by Bradford method using BSA as the standard;

Source:

Rabbit

Isotype:

IgG

Immunogen Catalog Number:

AG1814

GenBank Accession Number:

BC014167

GeneID (NCBI):

6137

UNIPROT ID:

P26373

Full Name:

ribosomal protein L13

Calculated MW:

24 kDa

Observed MW:

24 kDa

Purification Method:

Antigen affinity purification

Recommended Dilutions:

WB 1:500-1:1000

IP 0.5-4.0 ug for 1.0-3.0 mg of total protein lysate

IHC 1:20-1:200

Applications

Tested Applications:

WB, IP, IHC, ELISA

Cited Applications:

WB, IF

Species Specificity:

human, mouse, rat

Cited Species:

human, mouse

Note-IHC: suggested antigen retrieval with TE buffer pH 9.0; (*) Alternatively, antigen retrieval may be performed with citrate buffer pH 6.0

Positive Controls:

WB : HeLa cells, SGC-7901 cells, human lung tissue

IP : HeLa cells,

IHC : human colon cancer tissue,

Background Information

The mammalian ribosome comprises 79 ribosomal proteins and four rRNAs, which combine in equimolar ratios to form the small (40S) and large (60S) subunits. Ribosome proteins are a direct and critical target of the PI3K pathway in promoting growth.[PMID:15289434]. RPL13 may be a plausible candidate tumor suppressor gene, as knocking down L13 expression using small interfering RNA (siRNA) resulted in drastic attenuation of cancer cell growth with significant G1 and G2/M arrest of the cell cycle[PMID:16786168].

Notable Publications

Author	Pubmed ID	Journal	Application
Kai Ma	35637200	Cell Discov	WB
Sipeng Li	34265469	Mol Cell Proteomics	WB
Xiaochen Gai	34980897	Cell Res	IF

Storage

Storage:

Store at -20°C. Stable for one year after shipment.

Storage Buffer:

PBS with 0.02% sodium azide and 50% glycerol pH 7.3.

Aliquoting is unnecessary for -20°C storage

*** 20ul sizes contain 0.1% BSA

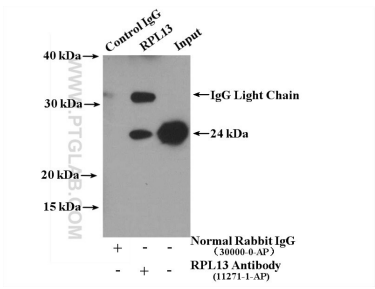
For technical support and original validation data for this product please contact:

T: 1 (888) 4PTGLAB (1-888-478-4522) (toll free in USA), or 1(312) 455-8498 (outside USA)

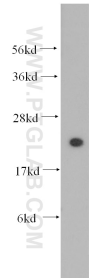
E: proteintech@ptglab.com
W: ptglab.com

This product is exclusively available under Proteintech Group brand and is not available to purchase from any other manufacturer.

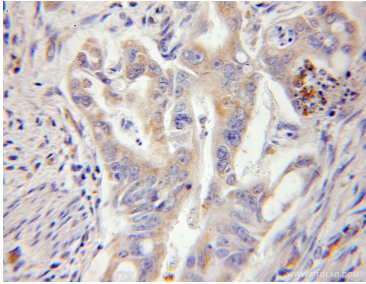
Selected Validation Data



IP result of anti-RPL13 (IP:11271-1-AP, 4ug; Detection:11271-1-AP 1:300) with HeLa cells lysate 3000 ug.



HeLa cells were subjected to SDS PAGE followed by western blot with 11271-1-AP (RPL13 antibody) at dilution of 1:500 incubated at room temperature for 1.5 hours.



Immunohistochemical analysis of paraffin-embedded human colon cancer using 11271-1-AP (RPL13 antibody) at dilution of 1:50 (under 10x lens).