

For Research Use Only

# CREB3 Polyclonal antibody

Catalog Number: 11275-1-AP

Featured Product

19 Publications



## Basic Information

### Catalog Number:

11275-1-AP

### Size:

150ul, Concentration: 450 ug/ml by Nanodrop and 150 ug/ml by Bradford method using BSA as the standard;

### Source:

Rabbit

### Isotype:

IgG

### Immunogen Catalog Number:

AG1823

### GenBank Accession Number:

BC009402

### GeneID (NCBI):

10488

### UNIPROT ID:

O43889

### Full Name:

cAMP responsive element binding protein 3

### Calculated MW:

44 kDa

### Observed MW:

40-64 kDa

### Purification Method:

Antigen affinity purification

### Recommended Dilutions:

WB 1:500-1:1000

IF/ICC 1:200-1:800

## Applications

### Tested Applications:

WB, IF/ICC, ELISA

### Cited Applications:

WB, IHC, IF, IP, ChIP

### Species Specificity:

human

### Cited Species:

human, mouse, rat

### Positive Controls:

WB: Jurkat cells, HeLa cells

IF/ICC: U2OS cells,

## Background Information

CREB3, also named as LZIP and Luman, belongs to the bZIP family and ATF subfamily. It is a transcription factor activated upon intramembrane proteolysis (RIP), binds the cAMP response element (CRE) (consensus: 5'-GTGACGT[AG][AG]-3'), a sequence present in many viral and cellular promoters. CREB3 binds to and requires HCFC1 as a coactivator. The activity and expression are suppressed when the HCFC1-CREB3 complex binds with CREBZF. Participates in LKN-1/CCL15-induced chemotaxis signaling. CREB3 is N-glycosylated and released by proteolysis. So the MW of CREB3 is 40kd to 64kd (PMID: 12138176).

## Notable Publications

Author	Pubmed ID	Journal	Application
Jenna Penney	30337854	Front Mol Neurosci	WB,IF,IP,ChIP
Ryoichi Murase	36152228	Mol Biol Rep	WB
Suhyun Kim	36057892	Cell Mol Life Sci	WB,IHC

## Storage

### Storage:

Store at -20°C. Stable for one year after shipment.

### Storage Buffer:

PBS with 0.02% sodium azide and 50% glycerol, pH7.3

Aliquoting is unnecessary for -20°C storage

\*\*\* 20ul sizes contain 0.1% BSA

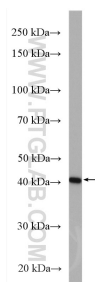
For technical support and original validation data for this product please contact:

T: 1 (888) 4PTGLAB (1-888-478-4522) (toll free in USA), or 1(312) 455-8498 (outside USA)

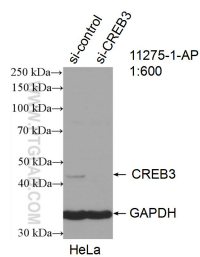
E: [proteintech@ptglab.com](mailto:proteintech@ptglab.com)  
W: [ptglab.com](http://ptglab.com)

This product is exclusively available under Proteintech Group brand and is not available to purchase from any other manufacturer.

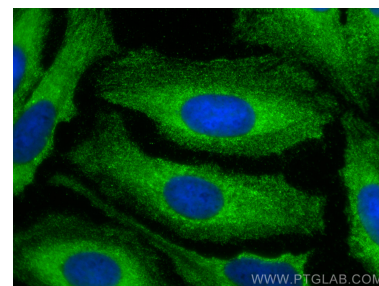
## Selected Validation Data



Jurkat cells were subjected to SDS PAGE followed by western blot with 11275-1-AP (CREB3 antibody) at dilution of 1:600 incubated at room temperature for 1.5 hours.



WB result of CREB3 antibody (11275-1-AP; 1:600; incubated at room temperature for 1.5 hours) with sh-Control and sh-CREB3 transfected HeLa cells.



Immunofluorescent analysis of (4% PFA) fixed U2OS cells using CREB3 antibody (11275-1-AP) at dilution of 1:400 and CoraLite®488-Conjugated Goat Anti-Rabbit IgG(H+L).