

For Research Use Only

# RMP Polyclonal antibody

Catalog Number: 11277-1-AP

Featured Product

7 Publications



## Basic Information

### Catalog Number:

11277-1-AP

### Size:

150ul, Concentration: 350 ug/ml by Nanodrop and 200 ug/ml by Bradford method using BSA as the standard;

### Source:

Rabbit

### Isotype:

IgG

### Immunogen Catalog Number:

AG1789

### GenBank Accession Number:

BC026184

### GeneID (NCBI):

8725

### UNIPROT ID:

O94763

### Full Name:

chromosome 19 open reading frame 2

### Calculated MW:

65 kDa

### Observed MW:

70-80 kDa

### Purification Method:

Antigen affinity purification

### Recommended Dilutions:

WB 1:500-1:1000

IP 0.5-4.0 ug for 1.0-3.0 mg of total protein lysate

IHC 1:20-1:200

## Applications

### Tested Applications:

WB, IP, IHC, ELISA

### Cited Applications:

WB, IP, IF, IHC

### Species Specificity:

human, mouse

### Cited Species:

human, mouse

### Positive Controls:

**WB**: A549 cells, HEK-293 cells, HeLa cells, HepG2 cells, Jurkat cells

**IP**: HeLa cells,

**IHC**: human lymphoma tissue, human liver cancer tissue

**Note-IHC: suggested antigen retrieval with TE buffer pH 9.0; (\*) Alternatively, antigen retrieval may be performed with citrate buffer pH 6.0**

## Notable Publications

Author	Pubmed ID	Journal	Application
Jian Zhang	36092156	Oxid Med Cell Longev	WB,IHC,IF
Jian Zhang	25605019	Oncotarget	IHC
Jian Zhang	30590389	Cardiovasc Res	WB,IHC

## Storage

### Storage:

Store at -20°C. Stable for one year after shipment.

### Storage Buffer:

PBS with 0.02% sodium azide and 50% glycerol pH 7.3.

Aliquoting is unnecessary for -20°C storage

\*\*\* 20ul sizes contain 0.1% BSA

For technical support and original validation data for this product please contact:

T: 1 (888) 4PTGLAB (1-888-478-4522) (toll free in USA), or 1(312) 455-8498 (outside USA)

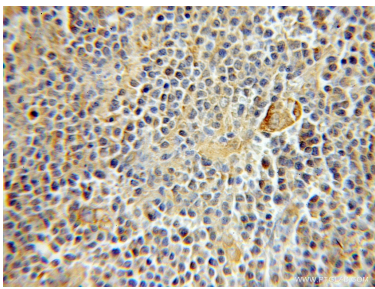
E: [proteintech@ptglab.com](mailto:proteintech@ptglab.com)  
W: [ptglab.com](http://ptglab.com)

This product is exclusively available under Proteintech Group brand and is not available to purchase from any other manufacturer.

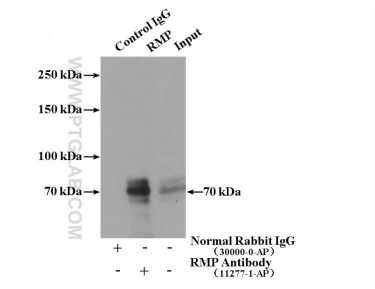
Selected Validation Data



A549 cells were subjected to SDS PAGE followed by western blot with 11277-1-AP (RMP antibody) at dilution of 1:500 incubated at room temperature for 1.5 hours.



Immunohistochemical analysis of paraffin-embedded human lymphoma using 11277-1-AP (RMP antibody) at dilution of 1:50 (under 10x lens).



IP result of anti-RMP (IP:11277-1-AP, 4ug; Detection:11277-1-AP 1:500) with HeLa cells lysate 1600ug.