

For Research Use Only

# EIF4G3 Polyclonal antibody, PBS Only

Catalog Number:11281-1-PBS



## Basic Information

Catalog Number:

11281-1-PBS

Size:

100ug , Concentration: 1 mg/ml by Nanodrop;

Source:

Rabbit

Isotype:

IgG

Immunogen Catalog Number:

AG1811

GenBank Accession Number:

BC030578

GeneID (NCBI):

8672

UNIPROT ID:

O43432

Full Name:

eukaryotic translation initiation factor 4 gamma, 3

Calculated MW:

177 kDa

Observed MW:

70 kDa, 250 kDa

Purification Method:

Antigen affinity purification

## Applications

Tested Applications:

WB, IHC, IF/ICC, IP, Indirect ELISA

Species Specificity:

human

## Background Information

Eukaryotic translation initiation factor 4 gamma, 3 (EIF4G3) may be involved in the recognition of the mRNA cap. The protein migrated at approximately 70 kDa and/or 250 kDa in SDS-PAGE.

## Storage

Storage:

Store at -80°C.

Storage Buffer:

PBS Only

For technical support and original validation data for this product please contact:

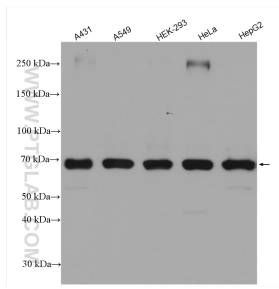
T: 1 (888) 4PTGLAB (1-888-478-4522) (toll free in USA), or 1(312) 455-8498 (outside USA)

E: [proteintech@ptglab.com](mailto:proteintech@ptglab.com)

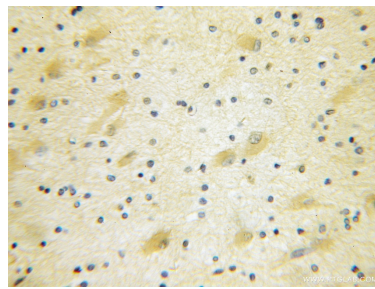
W: [ptglab.com](http://ptglab.com)

This product is exclusively available under Proteintech Group brand and is not available to purchase from any other manufacturer.

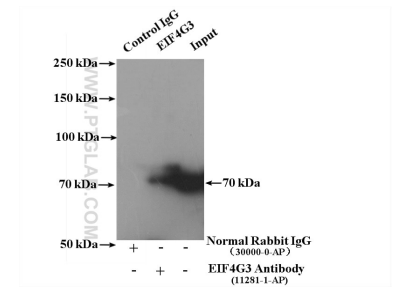
## Selected Validation Data



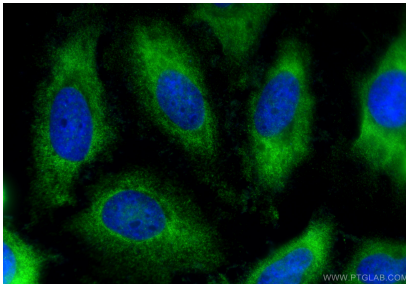
Various lysates were subjected to SDS PAGE followed by western blot with 11281-1-AP (EIF4G3 antibody) at dilution of 1:3000 incubated at room temperature for 1.5 hours. This data was developed using the same antibody clone with 11281-1-PBS in a different storage buffer formulation.



Immunohistochemical analysis of paraffin-embedded human gliomas using 11281-1-AP (EIF4G3 antibody) at dilution of 1:10 (under 10x lens). This data was developed using the same antibody clone with 11281-1-PBS in a different storage buffer formulation.



IP result of anti-EIF4G3 (IP:11281-1-AP, 4ug; Detection:11281-1-AP 1:500) with HeLa cells lysate 4000ug. This data was developed using the same antibody clone with 11281-1-PBS in a different storage buffer formulation.



Immunofluorescent analysis of (-20°C Ethanol) fixed HeLa cells using EIF4G3 antibody (11281-1-AP) at dilution of 1:400 and CoraLite®488-Conjugated Goat Anti-Rabbit IgG(H+L) (SA00013-2). This data was developed using the same antibody clone with 11281-1-PBS in a different storage buffer formulation.