

For Research Use Only

# PARP3 Polyclonal antibody, PBS Only

Catalog Number: 11289-1-PBS

Featured Product



## Basic Information

**Catalog Number:**

11289-1-PBS

**Size:**

100ug, Concentration: 1 mg/ml by Nanodrop;

**Source:**

Rabbit

**Isotype:**

IgG

**Immunogen Catalog Number:**

AG1844

**GenBank Accession Number:**

BC014260

**GeneID (NCBI):**

10039

**UNIPROT ID:**

Q9Y6F1

**Full Name:**

poly (ADP-ribose) polymerase family, member 3

**Calculated MW:**

60 kDa

**Observed MW:**

60-62 kDa

**Purification Method:**

Antigen affinity purification

## Applications

**Tested Applications:**

WB, IHC, IF/ICC, Indirect ELISA

**Species Specificity:**

human, mouse, rat

## Background Information

PARP3 (Poly(ADP-ribose) polymerase 3), also known as ARTD3, is the third member of the PARP family that catalyze a post-translational modification of proteins to promote, control or adjust numerous cellular events including genome integrity, transcription, differentiation, cell metabolism or cell death (PMID: 31095444). PARP3 is a 60-kDa protein containing an N-terminal WGR (tryptophan-, glycine-, and arginine-rich) domain and a C-terminal catalytic domain. PARP3 has been described to interact with partners belonging to the NHEJ pathway including DNA-PKcs, DNA ligase IV, Ku70 and Ku80 and to accelerate XRCC4/DNA ligase IV-mediated ligation of chromosomal DSB in concert with APLF (PMID: 24598253).

## Storage

**Storage:**

Store at -80°C.

**Storage Buffer:**

PBS Only

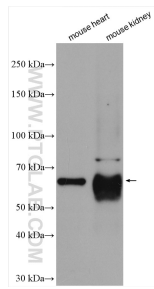
For technical support and original validation data for this product please contact:

T: 1 (888) 4PTGLAB (1-888-478-4522) (toll free in USA), or 1(312) 455-8498 (outside USA)

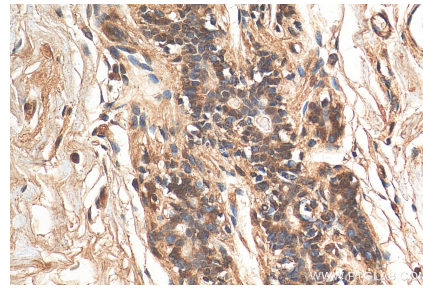
E: [proteintech@ptglab.com](mailto:proteintech@ptglab.com)  
W: [ptglab.com](http://ptglab.com)

This product is exclusively available under Proteintech Group brand and is not available to purchase from any other manufacturer.

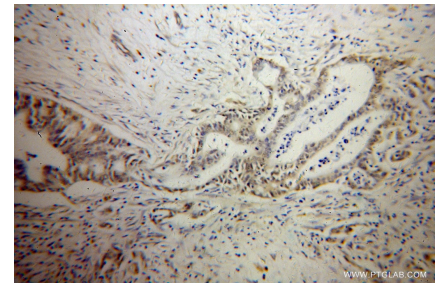
## Selected Validation Data



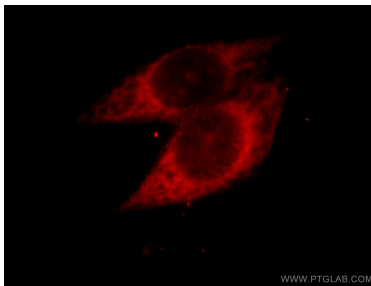
Various lysates were subjected to SDS PAGE followed by western blot with 11289-1-AP (PARP3 antibody) at dilution of 1:1500 incubated at room temperature for 1.5 hours. This data was developed using the same antibody clone with 11289-1-PBS in a different storage buffer formulation.



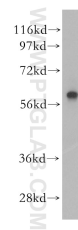
Immunohistochemical analysis of paraffin-embedded human breast cancer tissue slide using 11289-1-AP (PARP3 antibody) at dilution of 1:200 (under 40x lens). Heat mediated antigen retrieval with Tris-EDTA buffer (pH 9.0). This data was developed using the same antibody clone with 11289-1-PBS in a different storage buffer formulation.



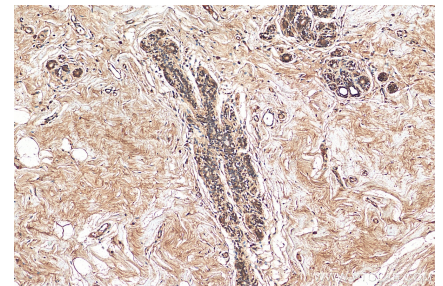
Immunohistochemical analysis of paraffin-embedded human pancreas cancer using 11289-1-AP (PARP3 antibody) at dilution of 1:50 (under 10x lens). This data was developed using the same antibody clone with 11289-1-PBS in a different storage buffer formulation.



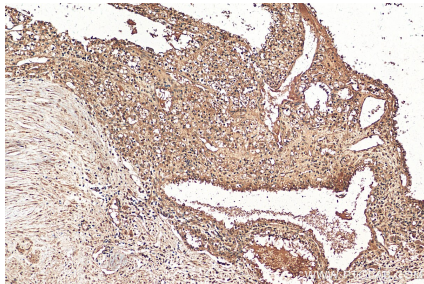
Immunofluorescent analysis of HeLa cells, using PARP3 antibody 11289-1-AP at 1:25 dilution and Rhodamine-labeled goat anti-rabbit IgG (red). This data was developed using the same antibody clone with 11289-1-PBS in a different storage buffer formulation.



human kidney tissue were subjected to SDS PAGE followed by western blot with 11289-1-AP (PARP3 antibody) at dilution of 1:500 incubated at room temperature for 1.5 hours. This data was developed using the same antibody clone with 11289-1-PBS in a different storage buffer formulation.



Immunohistochemical analysis of paraffin-embedded human breast cancer tissue slide using 11289-1-AP (PARP3 antibody) at dilution of 1:200 (under 10x lens). Heat mediated antigen retrieval with Tris-EDTA buffer (pH 9.0). This data was developed using the same antibody clone with 11289-1-PBS in a different storage buffer formulation.



Immunohistochemical analysis of paraffin-embedded human renal cell carcinoma tissue slide using 11289-1-AP (PARP3 antibody) at dilution of 1:200 (under 10x lens). Heat mediated antigen retrieval with Tris-EDTA buffer (pH 9.0). This data was developed using the same antibody clone with 11289-1-PBS in a different storage buffer formulation.