

For Research Use Only

SPIRE1 Polyclonal antibody, PBS Only

Catalog Number: 11295-1-PBS



Basic Information

Catalog Number:

11295-1-PBS

Size:

100ug, Concentration: 1 mg/ml by Nanodrop;

Source:

Rabbit

Isotype:

IgG

Immunogen Catalog Number:

AG1798

GenBank Accession Number:

BC016825

GeneID (NCBI):

56907

UNIPROT ID:

Q08AE8

Full Name:

spire homolog 1 (Drosophila)

Calculated MW:

64 kDa

Observed MW:

50-60 kDa, 95 kDa

Purification Method:

Antigen affinity purification

Applications

Tested Applications:

WB, IHC, IF-P, Indirect ELISA

Species Specificity:

human, mouse

Background Information

SPIRE1, Protein spire homolog 1, belongs to the family of Wiskott-Aldrich homology region-2 (WH2) proteins (PMID: 11747823). SPIRE1 acts as an actin nucleation factor, associated with the slow-growing pointed end of the new filament (PMID: 11747823, PMID: 21620703). SPIRE1 and FMN2 promote assembly of nuclear actin filaments in response to DNA damage in order to facilitate movement of chromatin and repair factors after DNA damage (PMID: 26287480).

Storage

Storage:

Store at -80°C.

Storage Buffer:

PBS only, pH7.3

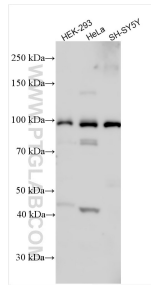
For technical support and original validation data for this product please contact:

T: 1 (888) 4PTGLAB (1-888-478-4522) (toll free in USA), or 1(312) 455-8498 (outside USA)

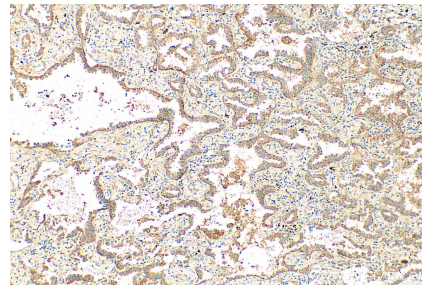
E: proteintech@ptglab.com
W: ptglab.com

This product is exclusively available under Proteintech Group brand and is not available to purchase from any other manufacturer.

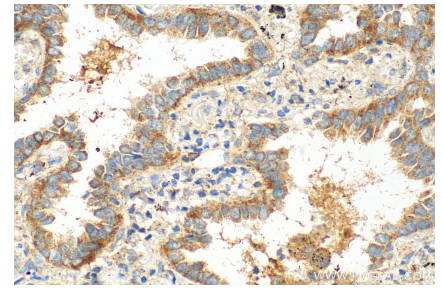
Selected Validation Data



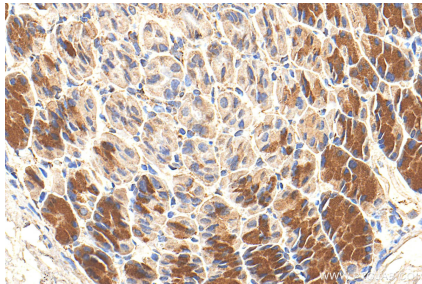
Various lysates were subjected to SDS PAGE followed by western blot with 11295-1-AP (SPIRE1 antibody) at dilution of 1:800 incubated at room temperature for 1.5 hours. This data was developed using the same antibody clone with 11295-1-PBS in a different storage buffer formulation.



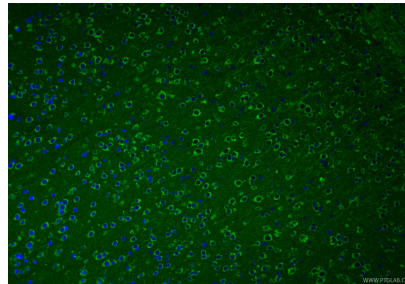
Immunohistochemical analysis of paraffin-embedded human lung cancer tissue slide using 11295-1-AP (SPIRE1 antibody) at dilution of 1:200 (under 10x lens). Heat mediated antigen retrieval with . This data was developed using the same antibody clone with 11295-1-PBS in a different storage buffer formulation.



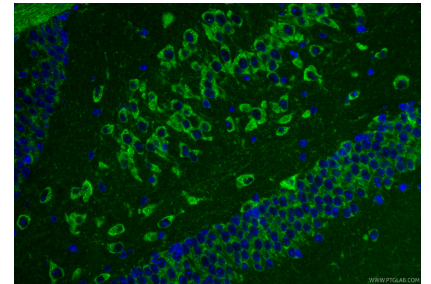
Immunohistochemical analysis of paraffin-embedded human lung cancer tissue slide using 11295-1-AP (SPIRE1 antibody) at dilution of 1:200 (under 40x lens). Heat mediated antigen retrieval with . This data was developed using the same antibody clone with 11295-1-PBS in a different storage buffer formulation.



Immunohistochemical analysis of paraffin-embedded mouse stomach tissue slide using 11295-1-AP (SPIRE1 antibody) at dilution of 1:200 (under 40x lens). Heat mediated antigen retrieval with Tris-EDTA buffer (pH 9.0). This data was developed using the same antibody clone with 11295-1-PBS in a different storage buffer formulation.



Immunofluorescent analysis of (4% PFA) fixed paraffin-embedded mouse brain tissue using SPIRE1 antibody (11295-1-AP) at dilution of 1:200 and CoraLite®488-Conjugated Goat Anti-Rabbit IgG(H+L) (SA00013-2). Heat mediated antigen retrieval with Tris-EDTA buffer (pH 9.0). This data was developed using the same antibody clone with 11295-1-PBS in a different storage buffer formulation.



Immunofluorescent analysis of (4% PFA) fixed paraffin-embedded mouse brain tissue using SPIRE1 antibody (11295-1-AP) at dilution of 1:200 and CoraLite®488-Conjugated Goat Anti-Rabbit IgG(H+L) (SA00013-2). Heat mediated antigen retrieval with Tris-EDTA buffer (pH 9.0). This data was developed using the same antibody clone with 11295-1-PBS in a different storage buffer formulation.