

For Research Use Only

ECHS1 Polyclonal antibody

Catalog Number: 11305-1-AP

Featured Product

28 Publications



Basic Information

Catalog Number:

11305-1-AP

Size:

150ul, Concentration: 400 ug/ml by Nanodrop;

Source:

Rabbit

Isotype:

IgG

Immunogen Catalog Number:

AG1842

GenBank Accession Number:

BC008906

GeneID (NCBI):

1892

UNIPROT ID:

P30084

Full Name:

enoyl Coenzyme A hydratase, short chain, 1, mitochondrial

Calculated MW:

31 kDa

Observed MW:

29-31 kDa

Purification Method:

Antigen affinity purification

Recommended Dilutions:

WB 1:2000-1:12000

IP 0.5-4.0 ug for 1.0-3.0 mg of total protein lysate

IHC 1:600-1:2400

IF/ICC 1:200-1:800

Applications

Tested Applications:

WB, IHC, IF/ICC, IP, ELISA

Cited Applications:

WB, IHC, IF, IP

Species Specificity:

human, mouse, rat

Cited Species:

human, mouse, rat

Note-IHC: suggested antigen retrieval with TE buffer pH 9.0; (*) Alternatively, antigen retrieval may be performed with citrate buffer pH 6.0

Positive Controls:

WB : HepG2 cells, HeLa cells, MCF-7 cells, mouse heart, mouse liver, rat liver

IP : PC-3 cells,

IHC : human colon tissue, human liver tissue

IF/ICC : HeLa cells,

Background Information

Enoyl-coenzyme A hydratase (ECHS1) is a mitochondrial protein which catalyzes the hydration of 2-trans-enoyl-coenzyme A intermediates to L-3-hydroxyacyl-coenzyme A, playing key role in metabolism of fatty acids in mitochondria. ECHS1 is highly expressed in muscle, liver and fibroblasts. Altered expression of ECHS1 has been considered as a characteristic feature of mitochondria dysfunction. (23275097, 23235493)

Notable Publications

| Author | Pubmed ID | Journal | Application |
|---------------------|-----------|-------------------|-------------|
| Lanaspa Miguel A MA | 23152807 | PLoS One | WB |
| Ching-Chou Tsai | 32450865 | Lipids Health Dis | WB |
| Bi-Yun Lin | 25760819 | Mol Med Rep | |

Storage

Storage:

Store at -20°C. Stable for one year after shipment.

Storage Buffer:

PBS with 0.02% sodium azide and 50% glycerol pH 7.3.

Aliquoting is unnecessary for -20°C storage

*** 20ul sizes contain 0.1% BSA

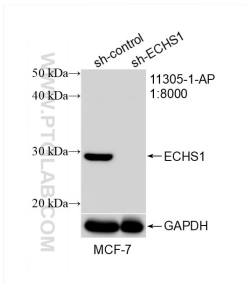
For technical support and original validation data for this product please contact:

T: 1 (888) 4PTGLAB (1-888-478-4522) (toll free in USA), or 1(312) 455-8498 (outside USA)

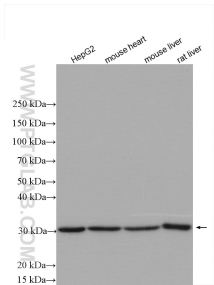
E: proteintech@ptglab.com
W: ptglab.com

This product is exclusively available under Proteintech Group brand and is not available to purchase from any other manufacturer.

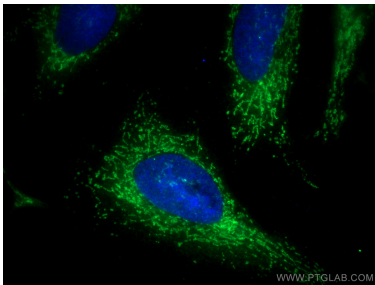
Selected Validation Data



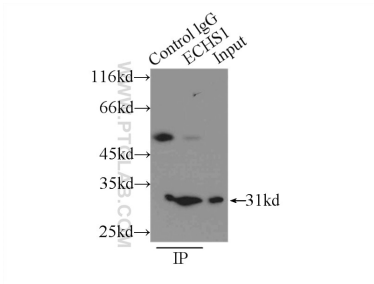
WB result of ECHS1 antibody (11305-1-AP; 1:8000; incubated at room temperature for 1.5 hours) with sh-Control and sh-ECHS1 transfected MCF-7 cells.



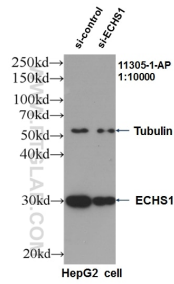
Various lysates were subjected to SDS PAGE followed by western blot with 11305-1-AP (ECHS1 antibody) at dilution of 1:6000 incubated at room temperature for 1.5 hours.



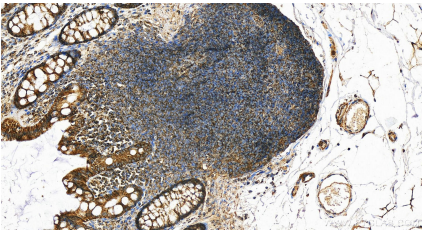
Immunofluorescent analysis of (-20°C Methanol) fixed HeLa cells using ECHS1 antibody (11305-1-AP) at dilution of 1:400 and CoraLite® 488-Conjugated AffiniPure Goat Anti-Rabbit IgG(H+L).



IP result of anti-ECHS1 (IP:11305-1-AP, 3ug; Detection:11305-1-AP 1:500) with PC-3 cells lysate 3000ug.



WB result of ECHS1 antibody (11305-1-AP, 1:1200) with si-Control and si-ECHS1 transfected HepG2 cells. .



Immunohistochemical analysis of paraffin-embedded human colon tissue slide using 11305-1-AP (ECHS1 antibody) at dilution of 1:1200 (under 20x lens). Heat mediated antigen retrieval with Tris-EDTA buffer (pH 9.0).