

For Research Use Only

# LPXN Polyclonal antibody, PBS Only

Catalog Number: 11307-1-PBS

Featured Product



## Basic Information

**Catalog Number:**

11307-1-PBS

**Size:**

100ug, Concentration: 1 mg/ml by Nanodrop;

**Source:**

Rabbit

**Isotype:**

IgG

**Immunogen Catalog Number:**

AG1845

**GenBank Accession Number:**

BC019035

**GeneID (NCBI):**

9404

**UNIPROT ID:**

O60711

**Full Name:**

leupaxin

**Calculated MW:**

43 kDa

**Observed MW:**

45 kDa

**Purification Method:**

Antigen affinity purification

## Applications

**Tested Applications:**

WB, IHC, IF/ICC, IP, Indirect ELISA

**Species Specificity:**

human

## Background Information

LPXN, also known as Leupaxin, LDPL, belongs to the paxillin family. LPXN contributes to the regulation of cell adhesion, spreading, and cell migration and acts as a negative regulator in integrin-mediated cell adhesion events (PMID: 20543562). LPXN has four leucine-rich LD-motifs in the N-terminus and four LIM domains in the C-terminus. It may function in cell type-specific signaling by associating with PYK2, a member of the focal adhesion kinase family (PMID: 9565592). Studies in breast cancer implicate LPXN is involved in the regulation of ER action as a co-factor (PMID: 25955236). LPXN is expressed in prostate cancer cells and its expression intensity is directly linked to PCa progression (PMID: 18451096).

## Storage

**Storage:**

Store at -80°C.

**Storage Buffer:**

PBS only, pH7.3

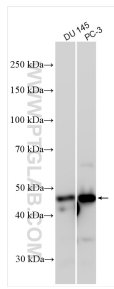
For technical support and original validation data for this product please contact:

T: 1 (888) 4PTGLAB (1-888-478-4522) (toll free in USA), or 1(312) 455-8498 (outside USA)

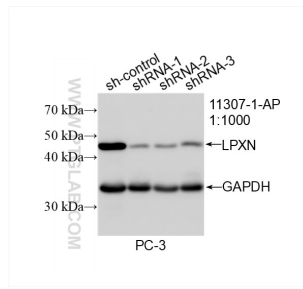
E: [proteintech@ptglab.com](mailto:proteintech@ptglab.com)  
W: [ptglab.com](http://ptglab.com)

This product is exclusively available under Proteintech Group brand and is not available to purchase from any other manufacturer.

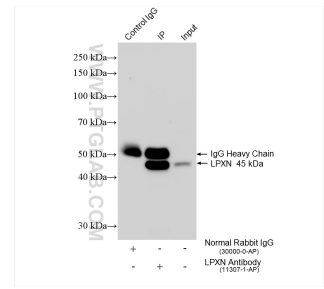
## Selected Validation Data



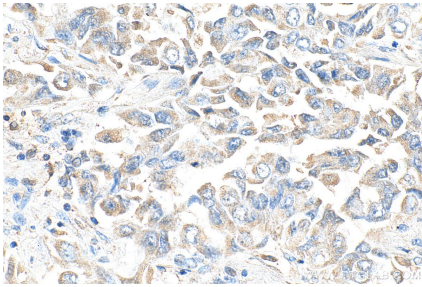
Various lysates were subjected to SDS PAGE followed by western blot with 11307-1-AP (LPXN antibody) at dilution of 1:5000 incubated at room temperature for 1.5 hours. This data was developed using the same antibody clone with 11307-1-PBS in a different storage buffer formulation.



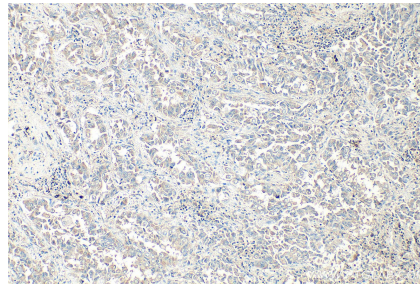
WB result of LPXN antibody (11307-1-AP; 1:1000; incubated at room temperature for 1.5 hours) with sh-Control and sh-LPXN transfected PC-3 cells. This data was developed using the same antibody clone with 11307-1-PBS in a different storage buffer formulation.



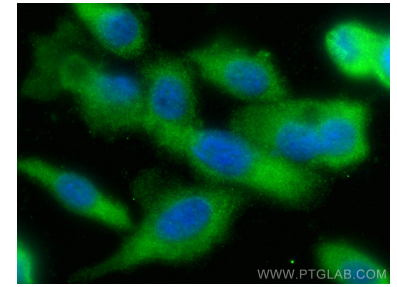
IP result of anti-LPXN (IP:11307-1-AP, 4ug; Detection:11307-1-AP 1:5000) with PC-3 cells lysate 1575 ug. This data was developed using the same antibody clone with 11307-1-PBS in a different storage buffer formulation.



Immunohistochemical analysis of paraffin-embedded human lung cancer tissue slide using 11307-1-AP (LPXN antibody) at dilution of 1:800 (under 40x lens). Heat mediated antigen retrieval with Tris-EDTA buffer (pH 9.0). This data was developed using the same antibody clone with 11307-1-PBS in a different storage buffer formulation.



Immunohistochemical analysis of paraffin-embedded human lung cancer tissue slide using 11307-1-AP (LPXN antibody) at dilution of 1:800 (under 10x lens). Heat mediated antigen retrieval with Tris-EDTA buffer (pH 9.0). This data was developed using the same antibody clone with 11307-1-PBS in a different storage buffer formulation.



Immunofluorescent analysis of (-20°C Ethanol) fixed PC-3 cells using LPXN antibody (11307-1-AP) at dilution of 1:400 and Multi-rAb CoraLite® Plus 488-Goat Anti-Rabbit Recombinant Secondary Antibody (H+L) (RGAR002). This data was developed using the same antibody clone with 11307-1-PBS in a different storage buffer formulation.