

For Research Use Only

IRF3 Polyclonal antibody, PBS Only

Catalog Number: 11312-1-PBS

Featured Product



Basic Information

Catalog Number:

11312-1-PBS

Size:

100ug, Concentration: 1 mg/ml by Nanodrop;

Source:

Rabbit

Isotype:

IgG

Immunogen Catalog Number:

AG1858

GenBank Accession Number:

BC009395

GeneID (NCBI):

3661

UNIPROT ID:

Q14653

Full Name:

interferon regulatory factor 3

Calculated MW:

47 kDa

Observed MW:

50-60 kDa

Purification Method:

Antigen affinity purification

Applications

Tested Applications:

WB, IHC, IF/ICC, IP, Indirect ELISA

Species Specificity:

human

Background Information

The virus-induced expression of interferon (IFN) genes in infected cells implicates in the interplay of several constitutively expressed and virus-activated transcription factors. A family of IFN regulatory factors (IRFs) have been shown to have a role in the transcription of IFN genes as well as IFN-stimulated genes. IRF3 is a novel key transcriptional regulator of type I IFN-dependent immune responses and involves in the innate immune response against DNA and RNA viruses, by binding to the promoters of IFN. It is located in the cytoplasm of uninfected cells in an inactive form, and following viral infection, double-stranded RNA (dsRNA), or toll-like receptor (TLR) signaling, could be phosphorylated by IKBKE and TBK1 kinases. This induces a conformational change, leading to its dimerization, nuclear localization and association with CREB binding protein (CREBBP) to form dsRNA-activated factor 1 (DRAF1), a complex which activates the transcription of the type I IFN and ISG genes. IRF3 exists in some isoforms with MW 47-49 kDa, 33 kDa and 12-16 kDa.

Storage

Storage:

Store at -80°C.

Storage Buffer:

PBS only

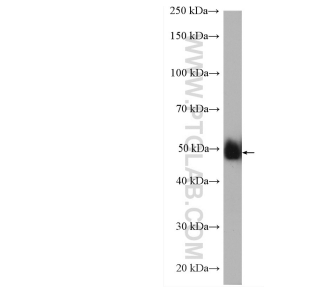
For technical support and original validation data for this product please contact:

T: 1 (888) 4PTGLAB (1-888-478-4522) (toll free in USA), or 1(312) 455-8498 (outside USA)

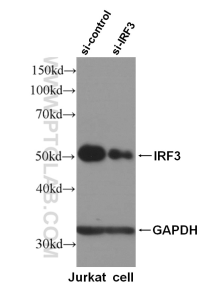
E: proteintech@ptglab.com
W: ptglab.com

This product is exclusively available under Proteintech Group brand and is not available to purchase from any other manufacturer.

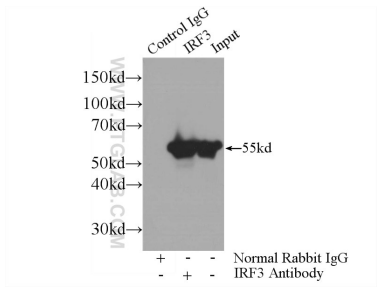
Selected Validation Data



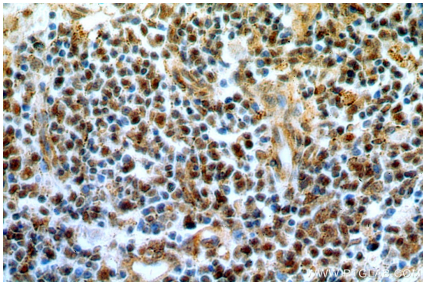
HeLa cells were subjected to SDS PAGE followed by western blot with 11312-1-AP (IRF3 antibody) at dilution of 1:5000 incubated at room temperature for 1.5 hours. This data was developed using the same antibody clone with 11312-1-PBS in a different storage buffer formulation.



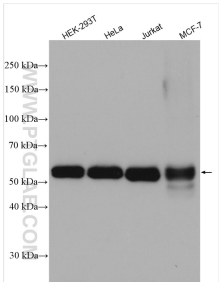
WB result of IRF3 specific antibody (11312-1-AP, 1:5000) with si-control and si-IRF3 transfected Jurkat cells. This data was developed using the same antibody clone with 11312-1-PBS in a different storage buffer formulation.



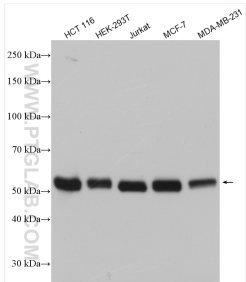
IP result of anti-IRF3 (IP:11312-1-AP, 3ug; Detection:11312-1-AP 1:1000) with Jurkat cells lysate 2400ug. This data was developed using the same antibody clone with 11312-1-PBS in a different storage buffer formulation.



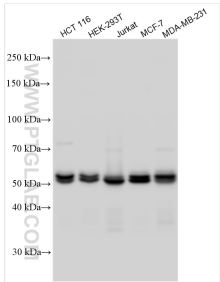
Immunohistochemical analysis of paraffin-embedded human spleen using 11312-1-AP (IRF3 antibody) at dilution of 1:50 (under 40x lens). This data was developed using the same antibody clone with 11312-1-PBS in a different storage buffer formulation.



Various lysates were subjected to SDS PAGE followed by western blot with 11312-1-AP (IRF3 antibody) at dilution of 1:10000 incubated at room temperature for 1.5 hours. This data was developed using the same antibody clone with 11312-1-PBS in a different storage buffer formulation.



Various lysates were subjected to SDS PAGE followed by western blot with 11312-1-AP (IRF3 antibody) at dilution of 1:20000 incubated at room temperature for 1.5 hours. This data was developed using the same antibody clone with 11312-1-PBS in a different storage buffer formulation.



Various lysates were subjected to SDS PAGE followed by western blot with 11312-1-AP (IRF3 antibody) at dilution of 1:20000 incubated at room temperature for 1.5 hours. This data was developed using the same antibody clone with 11312-1-PBS in a different storage buffer formulation.



Immunofluorescent analysis of (4% PFA) fixed HeLa cells using IRF3 antibody (11312-1-AP) at dilution of 1:400 and CoraLite®594-Conjugated Goat Anti-Rabbit IgG(H+L) (SA00013-4). This data was developed using the same antibody clone with 11312-1-PBS in a different storage buffer formulation.