

For Research Use Only

Alpha Actinin Polyclonal antibody, PBS Only

Catalog Number: 11313-2-PBS

Featured Product



Basic Information

Catalog Number:

11313-2-PBS

Size:

100ug, Concentration: 1 mg/ml by Nanodrop;

Source:

Rabbit

Isotype:

IgG

Immunogen Catalog Number:

AG1859

GenBank Accession Number:

BC015766

GeneID (NCBI):

87

UNIPROT ID:

P12814

Full Name:

actinin, alpha 1

Calculated MW:

103 kDa

Observed MW:

100-105 kDa

Purification Method:

Antigen affinity purification

Applications

Tested Applications:

WB, IHC, IF/ICC, IF-P, FC (Intra), Indirect ELISA

Species Specificity:

human, mouse, rat

Background Information

Alpha Actinins are highly conserved actin-binding proteins that form antiparallel homodimers with the actin-binding domains on each end of the molecule, allowing crosslinking of actin molecules. There are four alpha actinin isoforms identified: two ubiquitously expressed cytoskeletal isoforms (ACTN1 and ACTN4) and two striated muscle-specific sarcomeric isoforms (ACTN2 and ACTN3). ACTN1 is also alternatively spliced to form smooth muscle or brain specific isoforms. This antibody recognize endogenous ACTN1, while it may cross-react with ACTN2 and ACTN4.

Storage

Storage:

Store at -80°C.

Storage Buffer:

PBS only, pH7.3

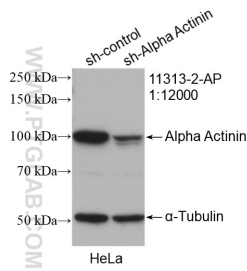
For technical support and original validation data for this product please contact:

T: 1 (888) 4PTGLAB (1-888-478-4522) (toll free in USA), or 1(312) 455-8498 (outside USA)

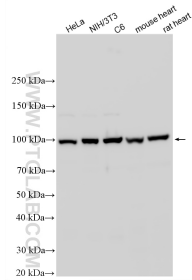
E: proteintech@ptglab.com
W: ptglab.com

This product is exclusively available under Proteintech Group brand and is not available to purchase from any other manufacturer.

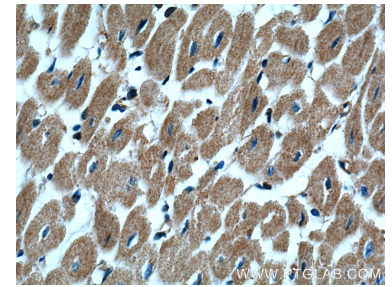
Selected Validation Data



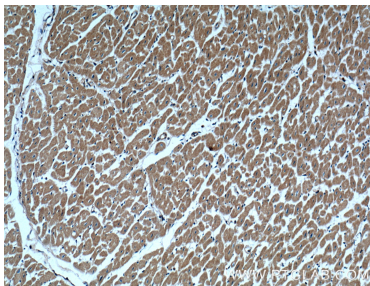
WB result of Alpha Actinin antibody (11313-2-AP; 1:12000; incubated at room temperature for 1.5 hours) with sh-Control and sh-Alpha Actinin transfected HeLa cells. This data was developed using the same antibody clone with 11313-2-PBS in a different storage buffer formulation.



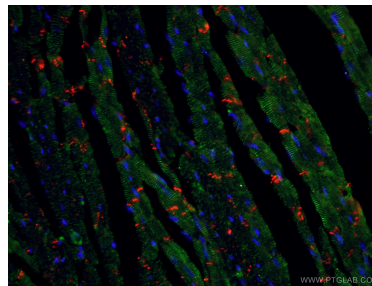
Various lysates were subjected to SDS PAGE followed by western blot with 11313-2-AP (Alpha Actinin antibody) at dilution of 1:20000 incubated at room temperature for 1.5 hours. This data was developed using the same antibody clone with 11313-2-PBS in a different storage buffer formulation.



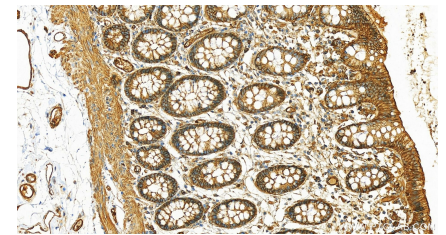
Immunohistochemical analysis of paraffin-embedded human heart tissue slide using 11313-2-AP (alpha Actinin antibody at dilution of 1:200 (under 40x lens). This data was developed using the same antibody clone with 11313-2-PBS in a different storage buffer formulation.



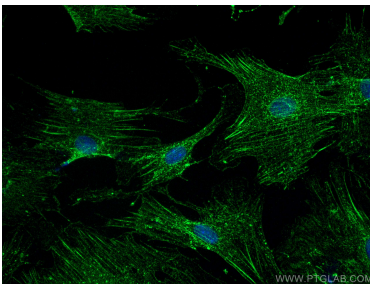
Immunohistochemical analysis of paraffin-embedded human heart tissue slide using 11313-2-AP (alpha Actinin antibody at dilution of 1:200 (under 10x lens). This data was developed using the same antibody clone with 11313-2-PBS in a different storage buffer formulation.



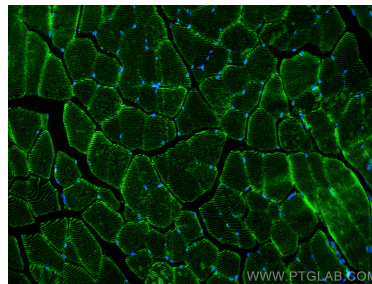
Immunofluorescent analysis of (4% PFA) fixed mouse heart tissue using 11313-2-AP (alpha Actinin antibody) at dilution of 1:50 and CoraLite488-Conjugated AffiniPure Goat Anti-Rabbit IgG(H+L). The section was co-stained with 66219-1-Ig (N-cadherin) in red. This data was developed using the same antibody clone with 11313-2-PBS in a different storage buffer formulation.



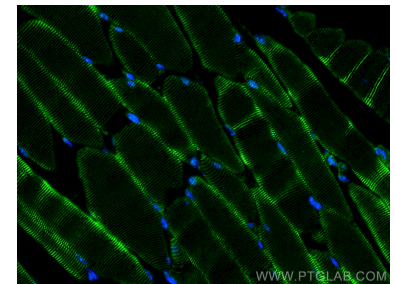
Immunohistochemical analysis of paraffin-embedded human normal colon slide using 11313-2-AP (Alpha Actinin antibody) at dilution of 1:1600 (under 20x lens). Heat mediated antigen retrieval with Tris-EDTA buffer (pH 9.0). This data was developed using the same antibody clone with 11313-2-PBS in a different storage buffer formulation.



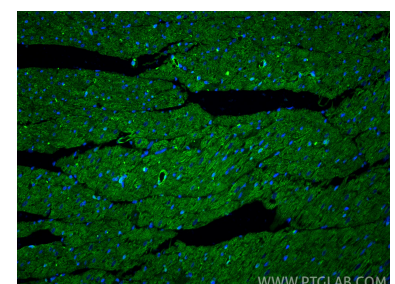
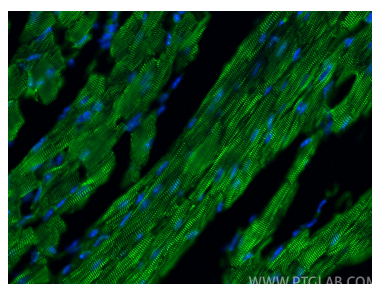
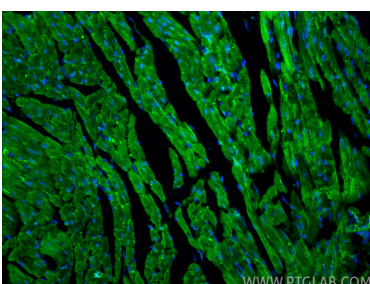
Immunofluorescent analysis of (-20°C Methanol) fixed mouse heart tissue using Alpha Actinin antibody (11313-2-AP) at dilution of 1:500 and CoraLite®488-Conjugated AffiniPure Goat Anti-Rabbit IgG(H+L). This data was developed using the same antibody clone with 11313-2-PBS in a different storage buffer formulation.



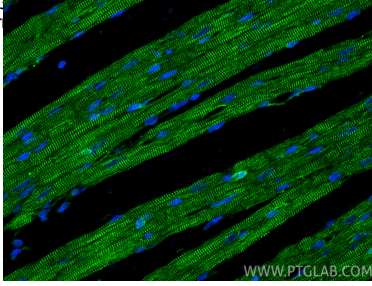
Immunofluorescent analysis of (4% PFA) fixed paraffin-embedded mouse skeletal muscle tissue using Alpha Actinin antibody (11313-2-AP) at dilution of 1:200 and Multi-rAb CoraLite® Plus 488-Goat Anti-Rabbit Recombinant Secondary Antibody (H+L) (RGAR002). Heat mediated antigen retrieval with Tris-EDTA buffer (pH 9.0). This data was developed using the same antibody clone with 11313-2-PBS in a different storage buffer formulation.



Immunofluorescent analysis of (4% PFA) fixed paraffin-embedded mouse skeletal muscle tissue using Alpha Actinin antibody (11313-2-AP) at dilution of 1:200 and Multi-rAb CoraLite® Plus 488-Goat Anti-Rabbit Recombinant Secondary Antibody (H+L) (RGAR002). Heat mediated antigen retrieval with Tris-EDTA buffer (pH 9.0). This data was developed using the same antibody clone with 11313-2-PBS in a different storage buffer formulation.

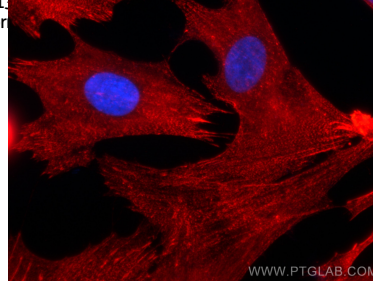


Immunofluorescent analysis of (4% PFA) fixed paraffin-embedded mouse heart tissue using Alpha Actinin antibody (11313-2-AP) at dilution of 1:1000 and CoraLite®488-Conjugated Goat Anti-Rabbit IgG(H+L) (SA00013-2). Heat mediated antigen retrieval with Tris-EDTA buffer (pH 9.0). This data was developed using the same antibody clone with 11313-2-PBS in a different storage buffer formulation.



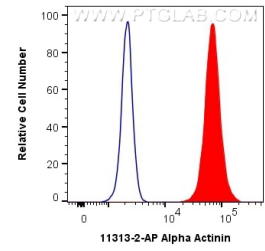
Immunofluorescent analysis of (4% PFA) fixed paraffin-embedded rat heart tissue using Alpha Actinin antibody (11313-2-AP) at dilution of 1:1000 and CoraLite®488-Conjugated Goat Anti-Rabbit IgG(H+L) (SA00013-2). Heat mediated antigen retrieval with Tris-EDTA buffer (pH 9.0). This data was developed using the same antibody clone with 11313-2-PBS in a different storage buffer formulation.

Immunofluorescent analysis of (4% PFA) fixed paraffin-embedded mouse heart tissue using Alpha Actinin antibody (11313-2-AP) at dilution of 1:1000 and CoraLite®488-Conjugated Goat Anti-Rabbit IgG(H+L) (SA00013-2). Heat mediated antigen retrieval with Tris-EDTA buffer (pH 9.0). This data was developed using the same antibody clone with 11313-2-PBS in a different storage buffer formulation.



Immunofluorescent analysis of (-20°C Ethanol) fixed HSkMC cells using Alpha Actinin antibody (11313-2-AP) at dilution of 1:200 and CoraLite®594-Conjugated Goat Anti-Rabbit IgG(H+L) (SA00013-4). This data was developed using the same antibody clone with 11313-2-PBS in a different storage buffer formulation.

Immunofluorescent analysis of (4% PFA) fixed paraffin-embedded rat heart tissue using Alpha Actinin antibody (11313-2-AP) at dilution of 1:1000 and CoraLite®488-Conjugated Goat Anti-Rabbit IgG(H+L) (SA00013-2). Heat mediated antigen retrieval with Tris-EDTA buffer (pH 9.0). This data was developed using the same antibody clone with 11313-2-PBS in a different storage buffer formulation.



1X10⁶ A431 cells were intracellularly stained with 0.4 ug Anti-Human Alpha Actinin (11313-2-AP) and CoraLite®488-Conjugated AffiniPure Goat Anti-Rabbit IgG(H+L) at dilution 1:1000 (red), or 0.4 ug Isotype Control. Cells were fixed with 4% PFA and permeabilized with Flow Cytometry Perm Buffer. This data was developed using the same antibody clone with 11313-2-PBS in a different storage buffer formulation.