

For Research Use Only

# DNASE1L3 Polyclonal antibody

Catalog Number: 11330-1-AP



## Basic Information

<b>Catalog Number:</b> 11330-1-AP	<b>GenBank Accession Number:</b> BC015831	<b>Purification Method:</b> Antigen affinity purification
<b>Size:</b> 150ul , Concentration: 400 µg/ml by Nanodrop and 267 µg/ml by Bradford method using BSA as the standard;	<b>GeneID (NCBI):</b> 1776	<b>Recommended Dilutions:</b> WB 1:200-1:600
<b>Source:</b> Rabbit	<b>Full Name:</b> deoxyribonuclease I-like 3	
<b>Isotype:</b> IgG	<b>Calculated MW:</b> 305 aa, 36 kDa	
<b>Immunogen Catalog Number:</b> AG1873	<b>Observed MW:</b> 33-38 kDa	

## Applications

<b>Tested Applications:</b> WB, ELISA	<b>Positive Controls:</b> WB : HEK-293 cells, Raji cells
<b>Species Specificity:</b> human	

## Background Information

Deoxyribonuclease 1-like 3 (DNASE1L3, DNase gamma, DNase Y, LS-DNase) is member of a DNASE1 protein family that is identified by similar biochemical properties such as Ca<sup>2+</sup>/Mg<sup>2+</sup> dependency and an optimal pH of about 7.0 as well as by a high similarity in their nucleic acid and amino acid sequences [PMID:15796714]. It is an endonuclease and cleaves double-stranded DNA (and single-stranded DNA) producing 3'-OH/5'-P ends, which is Ca<sup>2+</sup>/Mg<sup>2+</sup>-dependent and inhibited by Zn<sup>2+</sup>, but not by monomeric actin [PMID:9665719]. In addition, it has been suggested to be involved in apoptotic DNA fragmentation of thymocytes neuronal PC12 cells, C2C12 myoblasts and of cell lines expressing the recombinant nuclease [PMID: 7957253, 9307016]

## Storage

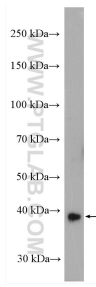
**Storage:**  
Store at -20°C. Stable for one year after shipment.  
**Storage Buffer:**  
PBS with 0.02% sodium azide and 50% glycerol pH 7.3.  
Aliquoting is unnecessary for -20°C storage

\*\*\* 20ul sizes contain 0.1% BSA

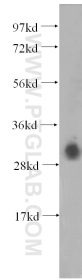
For technical support and original validation data for this product please contact:  
T: 1 (888) 4PTGLAB (1-888-478-4522) (toll free in USA), or 1(312) 455-8498 (outside USA)  
E: proteintech@ptglab.com  
W: ptglab.com

This product is exclusively available under Proteintech Group brand and is not available to purchase from any other manufacturer.

## Selected Validation Data



Raji cells were subjected to SDS PAGE followed by western blot with 11330-1-AP (DNASE1L3 antibody) at dilution of 1:600 incubated at room temperature for 1.5 hours.



HEK-293 cells were subjected to SDS PAGE followed by western blot with 11330-1-AP (DNASE1L3 antibody) at dilution of 1:600 incubated at room temperature for 1.5 hours.