

For Research Use Only

# EIF2B4 Polyclonal antibody

Catalog Number: 11332-1-AP

Featured Product

9 Publications



## Basic Information

### Catalog Number:

11332-1-AP

### Size:

150ul, Concentration: 650 ug/ml by Nanodrop and 247 ug/ml by Bradford method using BSA as the standard;

### Source:

Rabbit

### Isotype:

IgG

### Immunogen Catalog Number:

AG1875

### GenBank Accession Number:

BC001870

### GeneID (NCBI):

8890

### UNIPROT ID:

Q9UI10

### Full Name:

eukaryotic translation initiation factor 2B, subunit 4 delta, 67kDa

### Calculated MW:

523 aa, 58 kDa

### Observed MW:

58 kDa

### Purification Method:

Antigen affinity purification

### Recommended Dilutions:

WB 1:500-1:1000

IHC 1:20-1:200

IF/ICC 1:50-1:500

## Applications

### Tested Applications:

WB, IHC, IF/ICC, ELISA

### Cited Applications:

WB

### Species Specificity:

human, mouse

### Cited Species:

human, mouse

**Note-IHC: suggested antigen retrieval with TE buffer pH 9.0; (\*) Alternatively, antigen retrieval may be performed with citrate buffer pH 6.0**

### Positive Controls:

**WB:** MCF-7 cells, K-562 cells, HeLa cells, HL-60 cells, mouse skeletal muscle tissue

**IHC:** human breast cancer tissue, human testis tissue

**IF/ICC:** MCF-7 cells,

## Notable Publications

Author	Pubmed ID	Journal	Application
Yusuke Sekine	27812215	PLoS One	WB
Michael Schoof	33688831	Elife	WB
Noel C Wortham	26614765	Biochem J	WB

## Storage

### Storage:

Store at -20°C. Stable for one year after shipment.

### Storage Buffer:

PBS with 0.02% sodium azide and 50% glycerol pH 7.3.

Aliquoting is unnecessary for -20°C storage

\*\*\* 20ul sizes contain 0.1% BSA

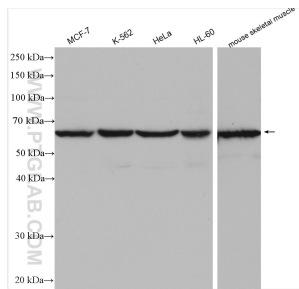
For technical support and original validation data for this product please contact:

T: 1 (888) 4PTGLAB (1-888-478-4522) (toll free in USA), or 1(312) 455-8498 (outside USA)

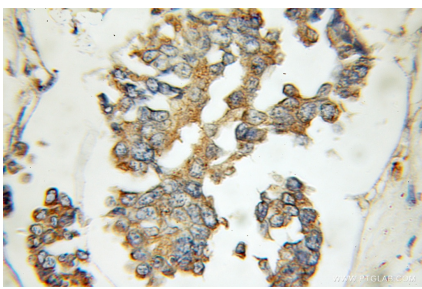
E: [proteintech@ptglab.com](mailto:proteintech@ptglab.com)  
W: [ptglab.com](http://ptglab.com)

This product is exclusively available under Proteintech Group brand and is not available to purchase from any other manufacturer.

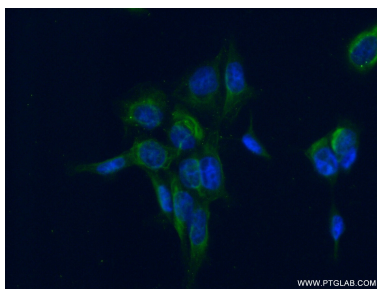
## Selected Validation Data



Various lysates were subjected to SDS PAGE followed by western blot with 11332-1-AP (EIF2B4 antibody) at dilution of 1:600 incubated at room temperature for 1.5 hours.



Immunohistochemical analysis of paraffin-embedded human breast cancer using 11332-1-AP (EIF2B4 antibody) at dilution of 1:100 (under 10x lens).



Immunofluorescent analysis of (-20°C Ethanol) fixed MCF-7 cells using 11332-1-AP (EIF2B4 antibody) at dilution of 1:50 and Alexa Fluor 488-conjugated AffiniPure Goat Anti-Rabbit IgG(H+L).