

For Research Use Only

# Keratin 81 Polyclonal antibody

Catalog Number: 11342-1-AP

Featured Product

4 Publications



## Basic Information

### Catalog Number:

11342-1-AP

### Size:

150ul, Concentration: 700 ug/ml by Nanodrop;

### Source:

Rabbit

### Isotype:

IgG

### Immunogen Catalog Number:

AG1890

### GenBank Accession Number:

BC021241

### GeneID (NCBI):

3887

### UNIPROT ID:

Q14533

### Full Name:

keratin 81

### Calculated MW:

55 kDa

### Observed MW:

54 kDa

### Purification Method:

Antigen affinity purification

### Recommended Dilutions:

WB 1:1000-1:4000

IP 0.5-4.0 ug for 1.0-3.0 mg of total protein lysate

IHC 1:20-1:200

IF/ICC 1:50-1:500

## Applications

### Tested Applications:

WB, IHC, IF/ICC, IP, ELISA

### Cited Applications:

WB, IHC

### Species Specificity:

human, mouse

### Cited Species:

human, mouse

### Positive Controls:

**WB** : HeLa cells, mouse thymus tissue, human spleen tissue, HEK-293 cells, MCF-7 cells, mouse pancreas tissue

**IP** : HEK-293 cells,

**IHC** : human colon cancer tissue,

**IF/ICC** : HeLa cells,

**Note-IHC: suggested antigen retrieval with TE buffer pH 9.0; (\*) Alternatively, antigen retrieval may be performed with citrate buffer pH 6.0**

## Background Information

Keratins are a large family of proteins that form the intermediate filament cytoskeleton of epithelial cells, which are classified into two major sequence types. Type I keratins are a group of acidic intermediate filament proteins, including K9-K23, and the hair keratins Ha1-Ha8. Type II keratins are the basic or neutral counterparts to the acidic type I keratins, including K1-K8, and the hair keratins, Hb1-Hb6. KRT81 is a type II keratin.

## Notable Publications

| Author          | Pubmed ID | Journal         | Application |
|-----------------|-----------|-----------------|-------------|
| Yifan Wang      | 32816949  | Clin Cancer Res | IHC         |
| Naoki Nanashima | 28405679  | Oncol Rep       |             |
| Diane S Kang    | 37949677  | Adv Sci (Weinh) | WB          |

## Storage

### Storage:

Store at -20°C. Stable for one year after shipment.

### Storage Buffer:

PBS with 0.02% sodium azide and 50% glycerol

Aliquoting is unnecessary for -20°C storage

\*\*\* 20ul sizes contain 0.1% BSA

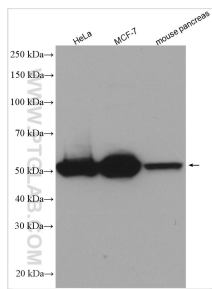
For technical support and original validation data for this product please contact:

T: 1 (888) 4PTGLAB (1-888-478-4522) (toll free in USA), or 1(312) 455-8498 (outside USA)

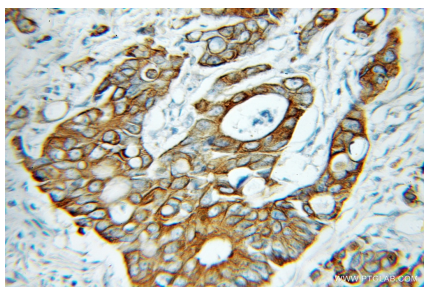
E: [proteintech@ptglab.com](mailto:proteintech@ptglab.com)  
W: [ptglab.com](http://ptglab.com)

This product is exclusively available under Proteintech Group brand and is not available to purchase from any other manufacturer.

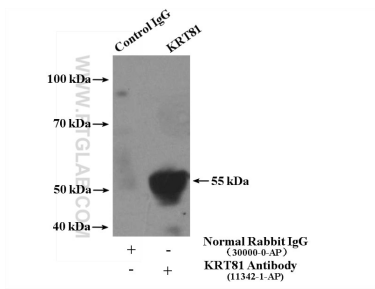
Selected Validation Data



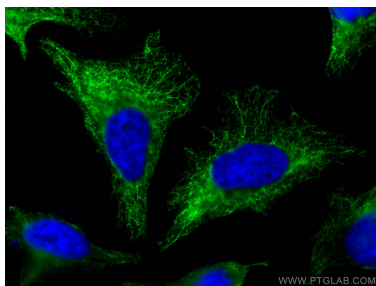
Various lysates were subjected to SDS PAGE followed by western blot with 11342-1-AP (KRT81 antibody) at dilution of 1:2000 incubated at room temperature for 1.5 hours.



Immunohistochemical analysis of paraffin-embedded human colon cancer using 11342-1-AP (KRT81 antibody) at dilution of 1:50 (under 10x lens).



IP result of anti-KRT81 (IP:11342-1-AP, 4ug; Detection:11342-1-AP 1:300) with HEK-293 cells lysate 2800ug.



Immunofluorescent analysis of (-20°C Methanol) fixed HeLa cells using KRT81 antibody (11342-1-AP) at dilution of 1:200 and CoraLite®488-Conjugated Goat Anti-Rabbit IgG(H+L).