

For Research Use Only

# Keratin 81 Polyclonal antibody, PBS Only

Catalog Number: 11342-1-PBS

Featured Product



## Basic Information

### Catalog Number:

11342-1-PBS

### Size:

100ug , Concentration: 1 mg/ml by Nanodrop;

### Source:

Rabbit

### Isotype:

IgG

### Immunogen Catalog Number:

AG1890

### GenBank Accession Number:

BC021241

### GeneID (NCBI):

3887

### UNIPROT ID:

Q14533

### Full Name:

keratin 81

### Calculated MW:

55 kDa

### Observed MW:

54 kDa

### Purification Method:

Antigen affinity purification

## Applications

### Tested Applications:

WB, IHC, IF/ICC, IP, Indirect ELISA

### Species Specificity:

human, mouse

## Background Information

Keratins are a large family of proteins that form the intermediate filament cytoskeleton of epithelial cells, which are classified into two major sequence types. Type I keratins are a group of acidic intermediate filament proteins, including K9-K23, and the hair keratins Ha1-Ha8. Type II keratins are the basic or neutral counterparts to the acidic type I keratins, including K1-K8, and the hair keratins, Hb1-Hb6. KRT81 is a type II keratin.

## Storage

### Storage:

Store at -80°C.

### Storage Buffer:

PBS only

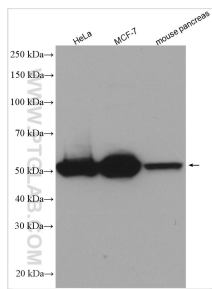
For technical support and original validation data for this product please contact:

T: 1 (888) 4PTGLAB (1-888-478-4522) (toll free in USA), or 1(312) 455-8498 (outside USA)

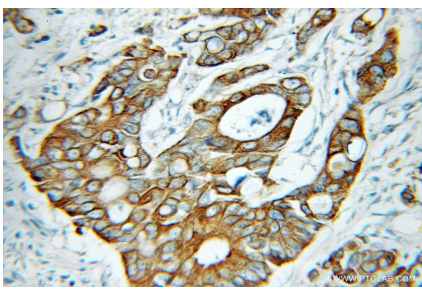
E: [proteintech@ptglab.com](mailto:proteintech@ptglab.com)  
W: [ptglab.com](http://ptglab.com)

This product is exclusively available under Proteintech Group brand and is not available to purchase from any other manufacturer.

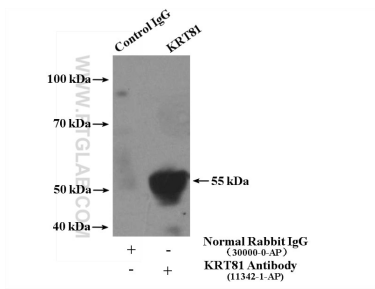
## Selected Validation Data



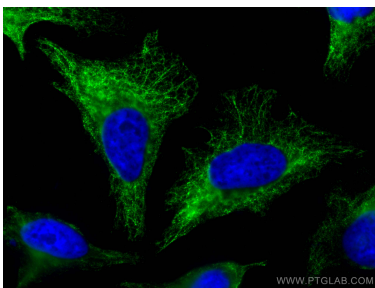
Various lysates were subjected to SDS PAGE followed by western blot with 11342-1-AP (KRT81 antibody) at dilution of 1:2000 incubated at room temperature for 1.5 hours. This data was developed using the same antibody clone with 11342-1-PBS in a different storage buffer formulation.



Immunohistochemical analysis of paraffin-embedded human colon cancer using 11342-1-AP (KRT81 antibody) at dilution of 1:50 (under 10x lens). This data was developed using the same antibody clone with 11342-1-PBS in a different storage buffer formulation.



IP result of anti-KRT81 (IP:11342-1-AP, 4ug; Detection:11342-1-AP 1:300) with HEK-293 cells lysate 2800ug. This data was developed using the same antibody clone with 11342-1-PBS in a different storage buffer formulation.



Immunofluorescent analysis of (-20°C Methanol) fixed HeLa cells using KRT81 antibody (11342-1-AP) at dilution of 1:200 and CoraLite®488-Conjugated AffiniPure Goat Anti-Rabbit IgG(H+L). This data was developed using the same antibody clone with 11342-1-PBS in a different storage buffer formulation.