

For Research Use Only

FLI1 Polyclonal antibody

Catalog Number: 11347-1-AP

Featured Product

5 Publications



Basic Information

Catalog Number:

11347-1-AP

Size:

150ul, Concentration: 533 ug/ml by Bradford method using BSA as the standard;

Source:

Rabbit

Isotype:

IgG

Immunogen Catalog Number:

AG1899

GenBank Accession Number:

BC010115

GeneID (NCBI):

2313

UNIPROT ID:

Q01543

Full Name:

Friend leukemia virus integration 1

Calculated MW:

452 aa, 51 kDa

Observed MW:

51 kDa

Purification Method:

Antigen affinity purification

Recommended Dilutions:

WB 1:1000-1:4000

Applications

Tested Applications:

WB, ELISA

Cited Applications:

WB, IHC

Species Specificity:

human, mouse

Cited Species:

human, mouse

Positive Controls:

WB: Jurkat cells, human brain tissue, mouse thymus tissue, MOLT-4 cells, Ramos cells, RAW 264.7 cells, U-937 cells

Background Information

Friend leukemia virus integration1 (FLI1) that is also termed EWSR2 encodes a sequence-specific transcriptional activator involved in Ewing's sarcoma (EWS), a malignant small, round, blue cell tumour. It is a rare disease in which cancer cells are found in the bone or in soft tissue. The most common areas in which it occurs are the pelvis, the femur, the humerus, the ribs and clavicle. EWS occurs most frequently in teenagers and young adults. FLI1 protein may act as an aberrant transcription factor, but exact mechanisms of oncogenesis remains unknown.

Notable Publications

Author	Pubmed ID	Journal	Application
Huiling Wang	29138848	Mol Med Rep	WB
Pengfei Li	35038582	Mol Ther	WB
Fengxue Geng	28286742	Front Cell Infect Microbiol	WB

Storage

Storage:

Store at -20°C. Stable for one year after shipment.

Storage Buffer:

PBS with 0.02% sodium azide and 50% glycerol pH 7.3.

Aliquoting is unnecessary for -20°C storage

*** 20ul sizes contain 0.1%BSA

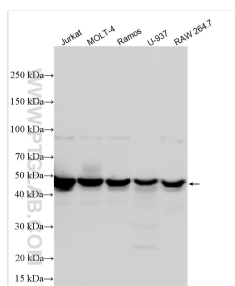
For technical support and original validation data for this product please contact:

T: 1 (888) 4PTGLAB (1-888-478-4522) (toll free in USA), or 1(312) 455-8498 (outside USA)

E: proteintech@ptglab.com
W: ptglab.com

This product is exclusively available under Proteintech Group brand and is not available to purchase from any other manufacturer.

Selected Validation Data



Various lysates were subjected to SDS PAGE followed by western blot with 11347-1-AP (FLI1 antibody) at dilution of 1:2000 incubated at room temperature for 1.5 hours.